

Harvey Cushing / John Hay Whitney  
Medical Library, Yale University

*Annual Report, 2022–2023*



## Contents

- 2 From the Director
- 3 Clinical Support
- 4 Education Support
- 8 Research Support
- 9 Community Initiatives
- 11 Exhibitions
- 12 Library Supporters and Friends
- 14 Staff Highlights
- 19 Staff

### Publication Note

The Harvey Cushing/  
John Hay Whitney Medical  
Library Annual Report is a  
collaborative effort.

### Annual Report Editors

Dana Haugh, Lead  
Christine Bailey  
Kayla Del Biondo  
Chris Zollo

### Contributors

Janene Batten, Courtney  
Brombosz, Kayla Del  
Biondo, Sofia Fertuzinhos,  
John Gallagher, Rolando  
Garcia-Milian, Melissa  
Grafe, Holly Grossetta  
Nardini, Dana Haugh,  
Caitlin Meyer, Megan  
Nance, Szusanna Nemeth,  
Kate Nyhan, Judy Spak,  
Kaitlin Throgmorton, Kyra  
Walker

### Photography

Terry Dagradi, Sofia  
Fertuzinhos, Holly  
Grossetta Nardini, Dana  
Haugh, Megan Nance, Kate  
Nyhan

### Publication Design

Dana Haugh

Cover: The Medical Library's  
main corridor bustling with  
students

Photo: Terry Dagradi

## From the Director

It is with great pleasure and pride that I present to you the 2022–2023 Annual Report of the Cushing/Whitney Medical Library. This report not only highlights our achievements over the past year, but also showcases the novel and innovative ways in which our library and its dedicated staff have supported the groundbreaking work carried out by all members of the medical center.

Our staff have been actively engaging with students and professionals to provide critical support in information retrieval, evidence synthesis, data management, bioinformatics, and other services. The popularity of our training sessions, one-on-one consultations, and research support affirms the essential role we play in facilitating knowledge dissemination and discovery.

Recognizing the impact of federal policy changes, our team has been instrumental in providing timely and valuable guidance to researchers about data sharing and management practices to ensure full compliance with the new National Institutes of Health (NIH) Data Sharing and Management Policy. Our Bioinformatics Hub remains a vital service, offering one of the most robust library bioinformatics support programs in the country. The bibliometric tools that the Medical Library licenses help create research impact reports for departments, research teams, and individuals.

We are dedicated to providing our users with seamless access to the information they need, whether they are remote or onsite. As we navigate an evolving scholarly communication landscape, we continue to prioritize access to valuable research collections and are committed to working with publishers to identify sustainable publishing models that help Yale authors make their research widely available via open access.



John Gallagher

Photo: Terry Dagradi

At the Cushing/Whitney Medical Library, the needs of our users are at the center of everything we do. I am extremely proud of our library staff, whose exceptional service and professionalism have earned them well-deserved recognition within our community and beyond. Their achievements, showcased in the Staff Highlights section of this report, demonstrate the breadth of their expertise, dedication, and productivity.

As we look ahead, our mission remains steadfast: to provide meaningful and helpful support to our community, ensuring that you have the information and tools you need to excel in your work. I encourage you to reach out to me or your librarian to learn more about our personalized services. Your feedback is invaluable, and we welcome your thoughts and suggestions to help us continually improve.

On behalf of the entire Cushing/Whitney Medical Library team, I extend our heartfelt gratitude for your ongoing support, collaboration, and engagement. Together, we will continue to advance medical education, research, and patient care now and into the future.

Sincerely,  
John Gallagher



## Clinical Support

### LIBRARY SUPPORT FOR RESIDENTS AND NURSES

To help medical and nursing residents meet national standards as they advance toward practice in their specialties, clinical librarians offer orientations, didactic sessions, and tailored training sessions in information management skills.

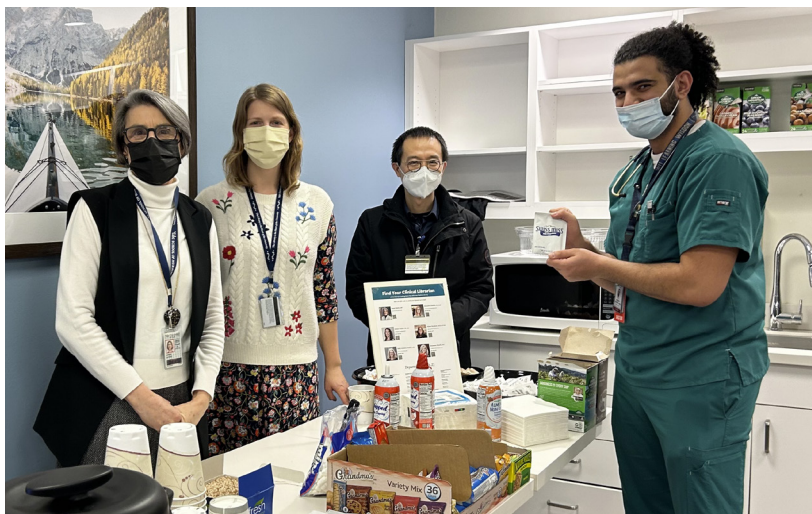
The Accreditation Council for Graduate Medical Education (ACGME) Core Competency project was developed in the late 1990s and is implemented in residency programs across all specialties. Clinical Research and Education Librarian Alexandria Brackett analyzed how the ACGME competencies and evidence-based practice skills relate to library resources and services. Her findings identified the information literacy skills needed by residents to succeed in the six competency areas: patient care, medical knowledge, practice-based learning and improvement, interpersonal skills and communication, professionalism, and systems-based practice. This analysis confirmed that clinical librarians provide essential educational support for residents and are partners in their success.

Yale New Haven Hospital's (YNHH) nurse residency program is one of sixty-two programs worldwide to hold accreditation with distinction from the American Nurses Credentialing Center's Practice Transition Accreditation Program. Research and Education Librarian for Nursing Janene Batten is the primary librarian to YNHH nurses and a partner in the YNHH nurse residency program.

### CLINICAL RESOURCES

This year, the Medical Library added several resources to support the practice of evidence-based medicine (EBM).

*TRIP Pro Database* provides researchers with a snapshot of the current evidence on a clinical topic. The database indexes clinical guidelines, systematic reviews, regulatory



Medical Library staff celebrate residents and fellows with hot chocolate and treats during Resident/Fellow Appreciation Week

Photo: Holly Grossetta Nardini

“One of the greatest resources that our residents and fellows have access to at Yale is our Medical Library. It is not just the library and its amazing online resources that are outstanding, it is the remarkably talented clinical librarians who support all graduate medical education programs. Each month at our meeting, we receive timely updates about new resources, training programs, and tips to make accessing the resources easy and relevant. This talented team is always willing to engage — assisting individual trainees as well as entire programs through didactics, consultations, and research support. We are very grateful for their expertise and collaboration.”

Stephen J. Huot, Senior Associate Dean for Graduate Medical Education

guidance, and randomized controlled trials. Search results are color-coded based on the EBM pyramid, making it easy to review the quality of the evidence.

*5-Minute Consult* allows clinicians to quickly find evidence-based answers to their clinical questions related to the diagnosis and treatment of patients at the point of care.

*NEJM Evidence* is a new peer-reviewed journal that aims to engage in conversations about the evaluation of clinical research.

Articles focus on validating existing clinical findings, improving the design of new clinical trials, and contextualizing clinical evidence.

*JAMAEvidence* provides resources to help students and clinicians translate the theory of EBM into practice.

---

## Education Support

### PUBLIC HEALTH

Research and Education Librarian for Public Health Kate Nyhan and Simbonis Librarian for Public Health Kayla Del Biondo were embedded in a variety of Yale School of Public Health (YSPH) happenings this past year.

In August 2022, Kate and Kayla worked with the Director of the Executive Master of Public Health Martin Klein to develop a survey to assess students' research interests and information needs. The survey responses led Kate and Kayla to develop video tutorials and training specifically for this diverse group of learners on topics such as citation chaining, searching for review

papers, and managing citations in EndNote.

In the spring, the duo was invited to contribute to the Onboarding and Resources Site (OARS), a new virtual orientation hub for incoming Master of Public Health students. Kayla developed a seven-minute video to explain how students can engage with librarians and learn new skills.

Assistant Professor of Clinical Public Health Laura Bothwell sought out Kate Nyhan and Web Services Librarian and Coordinator for Marketing and Communications Dana Haugh to teach in the core curriculum course "Major Health Threats: Ethics and Practice." Dana covered considerations for creating public health infographics as well as tools and resources students can use to augment their design process. Kate covered article processing charges, public access mandates, and transformative agreements, including Yale University Library's read-and-publish deals with PLOS and Cambridge University Press.

### EDUCATIONAL RESOURCES

The Medical Library became a curricular partner with *Aquifer*, a clinical reasoning tool that provides medical students with interactive patient cases to support the learning process in clinical clerkships. The

From July 2022 to June 2023, YSPH theses published to Yale Library's open access scholarly publishing platform EliScholar were downloaded 36,625 times across 187 countries.



upgrade enables faculty to use *Aquifer's* content in the classroom and provides access to the following new modules: Clinical Excellence, Family Medicine, Geriatrics, Internal Medicine, Integrated Illness Scripts, and Neurology.

Additionally, the *Agricola* and *ERIC* databases are now available via the Ovid interface which supports advanced searching and is especially valuable for systematic reviews and evidence syntheses.

## BIOINFORMATICS

This year, the Bioinformatics Support Hub librarians offered seventeen workshops, attracting over 340 attendees interested in learning about R packages and functional analysis of omics data. Additionally, postdocs and graduate students delivered fourteen sessions in the Bioinformatics “Peer-to-Peer” teaching series, engaging 176 participants in areas such as omics analysis, experimental design, science communication, and statistical tools. This valuable series provided an opportunity for graduate students and postdocs to practice their presentation and instruction skills.

The Medical Library also hosted presentations by faculty and researchers from around the medical campus, including a lecture on utilizing the NIH’s *All of Us* database for human research. The Hub continues to provide sustained bioinformatics support through one-on-one consultations and collaborations with the Yale/National Institute on Drug Abuse Neuroproteomics Center and other campus partners.

## NEW INSTRUCTION MENU

The Medical Library’s “Training and Events” webpage now offers an instruction menu that displays a public catalog of educational offerings. Users can explore the full range of medical librarian expertise and available training including learning objectives,



Kate Nyhan participates in the YSPH ‘Day of Service’ in May  
Photo: Courtesy of Kate Nyhan

Kayla Del Biondo and Courtney Brombosz introduce incoming medical students to flap anatomy books from the Historical Library’s collection

Photo: Terry Dagradi

Shubham Misra delivers a session on proteomics data analysis using R in the Bioinformatics “Peer-to-Peer” teaching series

Photo: Sofia Fertuzinhos







durations, and add-on modules for each session. Though custom workshops were always available, this page makes it easier for users (especially instructors) to request relevant library instruction sessions for their learners.

### HANDS-ON LEARNING

The Historical Library staff supported a significant number of Yale classes this year, offering seventy-one primary source sessions to 1,080 participants. Notable sessions included visits from Associate Professor Daniel Wiznia’s “Medical Device Design” where students conducted a failure analysis using the Keggi-Rubin hip implant collection, and Assistant Professor Marco Ramos’ “The History of Drugs in America” where students engaged with sources related to the history of drugs over a three-day period.

### LIBRARIANS PROVIDE FEEDBACK TO CLERKSHIP STUDENTS

At the request of Clerkship Director for Internal Medicine Dana Dunne, medical librarians revived an exercise that measures a medical student’s ability to find and evaluate evidence for patient care. Each student rotating through the twelve-week “Medical Approach to the Patient” clerkship completed the assignment based on patients they encountered. Students were required to articulate a research question related to a patient condition, devise strategies for searching the literature in multiple databases, and select high-quality articles that informed the care of their patients.

Head of Academic Research and Education Judy Spak and Research and Education Librarian Courtney Brombosz provided formative feedback on the students’ narratives. Students were asked to reflect on the exercise and how it affected

Archivist Katherine Isham shows students a page from an eighteenth-century anatomical atlas during a History of Medicine class

*Photo: Terry Dagradi*

their clinical experience. Many students reported that they felt more confident participating in team discussions based on their findings and more empowered with knowledge gained from the assignment.

### SKIN OF COLOR RESOURCE GUIDE

In October 2022, Associate Professor of Pediatrics Beverley J. Sheares reached out to the Medical Library with a request to compile resources that featured people of color in clinical practice. Historically, medical images have predominantly depicted white skin to illustrate different dermatological manifestations. A team of medical librarians quickly responded to assemble the Skin of Color resource guide featuring dermatology resources, tools, images, and best practices for treating patients of all races and ethnicities. Additionally, this resource provides an extensive list of inclusive textbooks for both students and educators.

### COMPETENCIES AND MILESTONES BOOKLET AND POSTER

Dana Haugh was recently asked to design a booklet and poster for the Yale School of Medicine (YSM) M.D. program's competencies and milestones. Collaborating closely with Deputy Dean for Education Jessica Illuzzi, Dana designed a twenty-eight-page booklet comprising the competencies, educational program objectives, and milestones required to successfully graduate from the program. All incoming and existing medical education students will receive a copy of this booklet to reference throughout their medical school career. Dana also designed a poster version of the competencies and program objectives that now hangs in all medical classrooms and many faculty offices.

## AAMC GRADUATION QUESTIONNAIRE RESULTS

Over the past five years, YSM graduates have consistently reported high satisfaction with the Medical Library's services, resources, and study spaces on the Association of American Medical Colleges (AAMC) Graduation Questionnaire. The 2022 results found that 98.7 percent of students were very satisfied (75.7 percent) or satisfied (23 percent) with the Medical Library — thirteen points higher than the national average.



Cover of the competencies and milestones booklet

## Research Support

### UNDERSTANDING OPEN ACCESS AWARENESS AT YSPH

Kayla Del Biondo, Kate Nyhan, and Associate Director Holly Grossetta Nardini recently conducted a research study to explore open access viewpoints of faculty at YSPH, particularly relating to “green open access” (also referred to as self-archiving). Their research goals were to understand faculty publishing considerations in order to revamp scholarly publishing support for YSPH and the greater medical campus.

The study found that 61 percent of faculty consider a publication’s access model (and if their work will be free-to-read) when deciding where to submit their manuscript. Interviews revealed that many faculty support open access because they value information equity. A handful of interviewees reported self-archiving their manuscripts on preprint servers at the time they submitted to a journal.

Kayla, Holly, and Kate identified nine key faculty knowledge gaps and publishing preferences which they will use to design specific library instruction and outreach interventions to support faculty in those areas. Survey and interview questions, along with presentations of the findings, can be viewed on Open Science Framework (<https://osf.io/mfpxa/>).

### NEW DATA MANAGEMENT AND SHARING EXPECTATIONS

In January 2023, the NIH updated their Data Management and Sharing (DMS) policy, requiring submission and implementation of DMS plans for all awards generating scientific data. Data Librarian for the Health Sciences Kaitlin Throgmorton helped over 500 researchers successfully navigate the new policy by offering dozens of trainings, consultations, and an asynchronous email course on data management. She continues to strategize new services with groups across campus.

### CELEBRATING ANOTHER SUCCESSFUL LOVE DATA WEEK

In February 2023, the Medical Library co-hosted a series of events in celebration of Love Data Week, an annual international event dedicated to data. The Medical Library teamed up with Yale University Library’s Digital Humanities Lab and other campus partners to host multiple educational sessions, speaker events, a film screening, and a mindfulness workshop. The celebration attracted over 200 attendees.

### UNDERSTANDING THE BUSINESS OF HEALTHCARE

The Medical Library and Marx Science and Social Science Library recently acquired full access to the American Hospital Association dataset for all Yale affiliates. A highly requested resource, this dataset contains annual survey data, plus supplemental information totaling more than 1,000 data points across multiple decades. It also provides information about hospitals’ organizational structures, service lines, finances, insurance and payment models, and staffing. Researchers can use this dataset to conduct extensive peer comparisons, market analyses, and health services research.

6,369

reference questions, referrals, and research consultations

6,613

articles delivered to our users through Scan and Deliver services

3,515

materials lent to other libraries



## Community Initiatives

### A VISIT FROM HANDSOME DAN

The Access and Delivery Services team brightened the winter exam season by organizing a visit from Handsome Dan. Visitors were encouraged to stop by between classes and study sessions for a photo with the University's beloved mascot. Additionally, Library Services Assistant Kyra Walker designed a seasonal trivia game in which patrons could win a snack bag or a fidget toy.

### STUDENT WELLNESS

To support student wellness, Medical Library staff provided opportunities for users to gather, connect, get creative, and de-stress. In the early months of 2023, students could stop in to decorate coloring pages, fill out medical-themed Valentine's Day cards, or grab a 'take-and-make' kit to enjoy in their own time. Kayla Del Biondo and Access Services Librarian Megan Nance partnered with Wellness Counselor for YSPH Diane Frankel-Gramelis and the Student Association of YSPH to host a mindful journaling workshop during National Public Health Week. Attendees learned about the benefits of journaling, participated in a grounding meditation, and decorated journals supplied during the event.

Staff members have been integrating wellness resources into other areas of the Medical Library with de-stressing tools, bookmarks, coloring pages, and a seed collection available near the circulation desk.

### CLOTHING DRIVE

In the spring, Megan Nance initiated and coordinated a women's clothing drive in collaboration with Chair of the Working Women's Network (WWN) Erin MacDonnell. Over the course of two weeks, the Yale community collectively donated thousands of gently used materials for women in the Greater New Haven area. The donations were delivered to three area



Handsome Dan visits the Medical Library  
*Photo: Megan Nance*

Megan Nance and Kayla Del Biondo socialize with students during a mindful journaling workshop  
*Photo: Holly Grossetta Nardini*

Student Wellness Counselor Sundari Birdsall hosts a "Doga" event at the Medical Library  
*Photo: Holly Grossetta Nardini*

nonprofits: Loaves and Fishes, the Umbrella Center for Domestic Violence Services, and Integrated Refugee and Immigrant Services (IRIS). Following the success of the event, the WVN has decided to host the drive biannually during the spring and fall seasons.

## BOOK DISPLAYS

The Access and Delivery Services team began implementing rotating book displays to engage the Medical Library community and promote materials in the physical collection. Topics have included mindfulness, healthcare in the Black community, women's health, herbal medicine, space and naval medicine, LGBTQ+ health, and activism in medicine.

## GRAPHIC MEDICINE COLLECTION

In 2022, Holly Grossetta Nardini was awarded a collection equity grant from the Network of the National Library of Medicine, which library staff used to create a new graphic medicine collection for both the Medical Library and a local high school. Megan Nance compiled a list of titles for the dual collection which features the lived experiences of patients and common struggles among healthcare professionals from diverse perspectives. Library Services Assistant Lisa Sanders worked diligently to acquire and process the physical materials for the collection.

In the year ahead, the Medical Library will work with librarians from New Haven public schools to find a home for the second collection and organize programming for high school students.

## PRIVACY BOOTHS

The Medical Library acquired two more Zenbooths. These free-standing modular privacy booths offer a soundproof space for visitors to take phone calls, have meetings, or focus on tasks. The booths are equipped

with an adjustable desk, power outlets, and dimmable lights. Additionally, high-powered fans cycle fresh air into the booths every minute.



Graphic medicine book collection located near the circulation desk

Three privacy booths are available on the E-Level

*Photos: Dana Haugh*





## Exhibitions



### AUGUST 2022 – JANUARY 2023

#### *Pasteur at 200*

This exhibition highlighted French chemist Louis Pasteur, who is best known for developing the process of pasteurization and his discoveries related to vaccination and fermentation. Many exhibition items were drawn from the Bert Hansen collection of medicine and public health in popular graphic art.

### LAUNCHED SEPTEMBER 2022

#### *Natural Interactions in the Book as Art and Making Knowledge* (online)

### JANUARY 2023 – MARCH 2023

#### *The Medical Lens: Highlights from the Stanley B. Burns, M.D. Historic Medical Photography Collection*

*The Medical Lens* explored the importance of photography in medicine through images selected from the Stanley B. Burns, M.D. historic medical photography collection. The selections included daguerreotypes, cabinet cards, lantern slides, postcards, and publications which offered compelling visuals of medical students, hospital wards, dissections, and treatments with objects dating back to the 1850s.

### FEBRUARY 2023 – JUNE 2023

#### *Crafting Worldviews: Art and Science in Europe, 1500–1800*

(Yale University Art Gallery)

This exhibition examined the inseparable relationship among art, science, and European colonialism from the sixteenth through eighteenth century with objects borrowed from across Yale's collections, including fifteen items from the Historical Library. Highlights from the Historical Library's collection included Peter Apian's *Astronomicum caesareum* (1540) with hand-colored volvelles, Andreas Vesalius' celebrated masterpiece of anatomy *De Humani Corporis Fabrica Libri Septem* (1543), and Robert Hooke's *Micrographia* (1665), an important early work on microscopy.

### MARCH 2023 – AUGUST 2023

#### *Killer or Cure? Poison through the Centuries*

This exhibition traced major developments in medical, legal, and public knowledge of poisons in the United States as they were used for both good and ill.

### MAY 2023 – AUGUST 2023

#### *Global Health through Historical Posters*

Bert Hansen gives a lecture to accompany the opening of *Pasteur at 200* titled "Louis Pasteur's Adventures in the Natural Sciences, the Fine Arts, and the Popular Press"

Stanley B. Burns discusses items in the *The Medical Lens* exhibition during a special event "Medical Photography and the Humanities: Connecting History to Practice"

*Killer or Cure* exhibition curator and Yale Ph.D. candidate Sophie Richardson delicately places vials into a display case

*Photos: Terry Dagradi*

## Library Supporters and Friends



### DONORS

#### Gifts of \$250 or more

Katherine Albert	Benjamin P. Negin
Sundeep R. Bhat	Dan A. Oren
John Booss	W. Scott Peterson
Nancy J. Brown	Robert H. Posteraro
Michael E. Carey	Seth M. Powsner
Charles A. Coffin	Alan M. Reznik
Memorial Fund	Joseph D. Robinson
Robert B. Diasio	Ronnie A. Rosenthal
Amichai J. Erdfarb	Gilbert B. Solitare
Robert I. Finkel	Lauren T. Spiliotes
Paul Gagliardi	Shepard B. Stone
Michael Kashgarian	Lee H. Strohl
Andrew L. May	Albert L. Ungricht
Judith A. Melin	Aron D. Wahrman
John J. Mooney	Edward D. Wang
Nikhil R. Nayak	Seth M. Weingarten

### MEDICAL LIBRARY ASSOCIATES

Established in 1948, the Medical Library Associates have supported the Medical Library for over seventy years, helping enable its world-class services to the faculty, staff, and students of the Yale medical center, today and for generations to come.

Through the generosity of our Associates, the Medical Library provides essential support for biomedical education and research. Some past examples of what the Medical Library Associates have funded include purchasing rare books and manuscripts for research, such as the fourteenth-century *Paneth Codex*, and exhibition cases for the central rotunda.

To make a gift or learn more about becoming a Medical Library Associate,

Gregg Gonsalves delivers the 2023 Lecture of the Medical Library Associates titled “We Will Be Citizens: AIDS Activism and Global Health Justice”

*Photo: Terry Dagradi*

### CHARLES A. COFFIN MEMORIAL FUND

The Board of Managers of the Charles A. Coffin Memorial Fund invited Director John Gallagher to present an update on the Medical Library at the Annual Meeting and Symposium held in May. Established when the Yale Medical Library was opened in 1941, the Charles A. Coffin Memorial Fund has been instrumental in helping the Medical Library serve the information needs of generations of library users, and we are immensely grateful for the Board’s enduring support.



please visit our website or contact Senior Administrative Assistant Christine Bailey. All gifts are tax-deductible.

### CUSHING CENTER ADVISORY BOARD

In September 2022, the Cushing Center Advisory Board held its inaugural meeting. The Board's mission is to provide support and advice on ethical and academic issues related to the Cushing Center, as well as advise and assist in the development of new programs. Inaugural members include:

Jessie C. Cohen, Repatriation Registrar,  
Yale Peabody Museum  
Mark Mercurio, Director of the Program for  
Biomedical Ethics  
Chitra Ramalingam, Director of Academic  
Engagement, Solomon R. Guggenheim  
Museum  
Dennis Spencer, Harvey and Kate  
Cushing Professor Emeritus and Senior  
Research Scientist of Neurosurgery  
John Warner, Avalon Professor in the  
History of Medicine and Professor of  
American Studies and of History

### DONATIONS TO THE GENERAL COLLECTION

Harold Doshan, Ph.D.  
Family of Gordon Shepherd, M.D., D.Phil.  
Kenneth Kidd, Ph.D.  
Robert Alpern, M.D.  
Diane Rotnem, Ph.D., L.C.S.W. and Clark  
Springgate, M.D.  
Sandy Chira, M.D.  
Paul Taheri, M.D.  
Hemali Shah, M.D. '23

### REMEMBERING THOMAS DUFFY

On May 24, 2023, a memorial service was held in the Historical Library in honor of Professor Emeritus of Medicine Thomas Duffy (1937-2022), with an accompanying exhibition on his life and career within the space. Dr. Duffy served as Chief of the

Klatskin Medical Firm and Director of the Hematology Fellowship Program for Yale Cancer Center for over a decade.

Dr. Duffy had a passion for the arts and led the Program for Humanities in Medicine at YSM for many years. He was also instrumental in the establishment of the Yale Medical Symphony Orchestra in 2008 and was a fellow of the Whitney Humanities Center. Dr. Duffy was a long-time patron and supporter of the Medical Library, and served on the Board of Trustees for the Medical Library Associates.



Thomas Duffy

### ADDITIONAL GIFTS

M. Gilbert Grand, M.D. and Aaron Grand,  
M.D.  
Attilio V. Granata, M.D.  
Michel Dubuisson, M.D.  
Elisabeth Garrett Widmer  
Tania Bayard and Ann Bayard Ketterer  
Will Melton  
Randi Hutter Epstein, M.D.  
Naomi Rogers, Ph.D.  
Lisa Kereszi, M.F.A.  
Barbara Milton  
Tom Chase  
Aron Wahrman, M.D. and Margaret  
Wahrman  
Bernie and Beth Triche  
Lisa Ide, M.D.  
Susan Lominska  
Megann Licskai  
Bert Hansen, Ph.D.  
Stanley Burns, M.D.

## Staff Highlights

### LONG SERVICE AWARDS

20 years — Kelly Perry

5 years — Vasean Daniels, Caitlin Meyer

### NEW STAFF

This year we welcomed four new staff members.

**Christine Bailey**, Senior Administrative Assistant

**Sonali Banerjee**, Operations Manager

**Jeffrey Brown**, Library Services Assistant

**Liz Jenkins**, Collection Strategies Librarian

### PROMOTIONS

Promoted to Librarian II — Courtney Brombosz, Sofia Fertuzinhos

### RECOGNITION

**Holly Grossetta Nardini** was selected as a Fellow in the 2022/2023 National Library of Medicine/Association of Academic Health Sciences Libraries Leadership Fellows Program. Selection for participation in this program is highly competitive and a testament to Holly's experience, talent, and recognized ability for leadership within health sciences librarianship. The program prepares leaders for director positions in academic health sciences libraries and matches fellows and mentors in a one-year leadership development program.

### RETIREMENTS

Two Medical Library staff members retired this year.

**Melanie Norton** joined Yale as the Medical Library's Document Delivery Librarian in 2011 and became Head of Access and Delivery Services just a few months later. Under Melanie's leadership, the Medical Library pioneered several unique services on campus, including library support for distance learners in the Yale Physician Assistant Online (PA) program, the first online PA program in the United



States. Throughout her career Melanie also demonstrated a strong commitment to meeting the needs of individuals affected by disabilities and co-chaired DiversAbility at Yale (DAY) from 2019–2021. She was recognized by DAY in 2021 for her outstanding leadership.

**Aletia Garvey** retired this year after nearly twenty-five years as a member of the Medical Library's Access and Delivery Services team. Aletia's knowledge of the print collections and stacks made her a keystone for many of the circulation and document delivery services.

Holly Grossetta Nardini (back row, second from right) among the 2022/2023 leadership fellows cohort

*Photo: Courtesy of Holly Grossetta Nardini*

(L to R): Melanie Norton, Aletia Garvey

*Photos: Terry Dagradi*



## PUBLICATIONS

The evidence synthesis and comprehensive searching projects would not be possible without a team of dedicated staff who facilitate article retrieval and citation management: Vermetha Polite, Vasean Daniels, Victoria Helwig, Mary Hughes, Dorota Peglow, Pamela Gibson, Aletia Garvey, and Lisa Sanders.

### Janene Batten

2022

“Sex-specific impact of diabetes on all-cause mortality among adults with acute myocardial infarction: an updated systematic review and meta-analysis, 1988–2021.” *Frontiers in Endocrinology*, 13: 918095. 2022. Ding Q, Funk M, Spatz ES, Lin H, Batten J, Wu E, & Whittemore R.

“Use of the self- and family management framework in quantitative studies.” *Nursing Outlook*. 2022. Park JH, Rada L, Feder SL, Batten J, Montano A, Tan H, Grey M, & Schulman-Green D.

2023

“Investigating the impact of stigma, accessibility and confidentiality on STI/STD/HIV self-testing among college students in the USA: protocol for a scoping review.” *BMJ Open*, 13(2): e069574. 2023. Reeves JM, Zigah EY, Shamrock OW, Aidoo-Frimpong G, Dada D, Batten J, Abu-Ba'are GR, Nelson LE, & Djideu P.

### Alexandria Brackett

2022

“Detecting cognitive impairment and dementia in the emergency department: a scoping review.” *Journal of American Medical Directors Association*, 23(8): 1314.e31-1314.e88. 2022. Nowroozpoor A, Dussetschleger J, Perry W, Sano M, Aloysi A, Belleville M, Brackett A, Hirshon JM, Hung W, Moccia JM, Ohuabunwa U, Shah MN, Hwang U, & GEAR 2.0-ADC Network.

“Evidence of racial disparities in the lung cancer screening process: a systematic review and meta-analysis.” *Journal of General Internal Medicine*, 37(14): 3731-3738. 2022. Kunitomo Y, Bade B, Gunderson CG, Akgün KM, Brackett A, Tanoue L, & Bastian LA.

“Interventions targeted to address social determinants of health in ischemic heart disease: a sex- and gender-oriented scoping review.” *Canadian Journal of Cardiology*, 38(12): 1881-1892. 2022. Raparelli V, Wright CX, Corica B, Sharma G, Lindley K, Brackett A, Pilote L, Wood MJ, & Dreyer RP.

“The prognostic value of CAC zero among individuals presenting with chest pain: a meta-analysis.” *JACC Cardiovasc Imaging*, 15(10): 1745-1757. 2022. Agha AM, Pacor J, Grandhi GR, Mszar R, Khan SU, Parikh R, Agrawal T, Burt J, Blankstein R, Blaha MJ, Shaw LJ, Al-Mallah MH, Brackett A, Cainzos-Achirica M, Miller EJ, & Nasir K.

“United States emergency department screening for drug use among assault-injured individuals: a systematic review.” *Western Journal of Emergency Medicine*, 23(4): 443-450. 2022. Coupet EJ, Dodington J, Brackett A, & Vaca FE.

2023

“Indoor versus outdoor: does occupational sunlight exposure increase melanoma risk? A systematic review.” *Journal of Surgical Research*, 283: 274-281. 2023. Maduka RC, Tai K, Gonsai R, DeWalt N, Chetty A, Brackett A, Olino K, Schneider EB, & Ahuja V.

“Representation of patients with non-English language preferences in motor vehicle collision trauma and emergency medicine research.” *Injury Prevention*, 29(3): 253-258. 2023. Smith M, Tibbetts C, Agrawal P, Cordone A, Leff R, Smith RN, Moran TP, Brackett A, & Zeidan A.

### Kayla Del Biondo

“Analysis of liaison librarian visibility on school of public health websites: a case study approach examining Yale School of Public Health and peer institutions.” *Doddy's Core Titles Featured Articles*. 2022.

### Sofia Fertuzinhos

“Autologous humanized PDX modeling for immuno-oncology recapitulates features of the human tumor microenvironment.” *Journal for ImmunoTherapy of Cancer*, 11(7): e006921. 2023. Chiorazzi M, Martinek J, Krasnick B, Zheng Y, Robbins KJ, Qu R, Kaufmann G, Skidmore Z, Juric M, Henze LA, Brösecke F, Adonyi A, Zhao J, Shan L, Sefik E, Mudd J, Bi Y, Goedegebuure SP, Griffith M, Griffith O, Oyediji A, Fertuzinhos S, Garcia-Milian R, Boffa D, Detterbeck F, Dhanasopon A, Blasberg J, Judson B, Gettinger S, Politi K, Kluger Y, Palucka K, Fields RC, & Flavell RA.

### Melissa Funaro

2022

“Examining weight bias before and/or after bariatric surgery: a systematic review.” *Obesity Review*, 23(11): e13500. 2022. Bennett BL, Lawson JL, Funaro MC, & Ivezaj V.

“Is there evidence for using anticonvulsants in the prevention and/or treatment of delirium among older adults?” *International Psychogeriatrics*, 34(10): 889-903. 2022. Gupta A, Joshi P, Bhattacharya G, Lehman M, Funaro M, Tampi DJ, & Tampi RR.

“Machine learning and non-affective psychosis: identification, differential diagnosis, and treatment.” *Current Psychiatry Reports*, 24(12): 925-936. 2022. Ferrara M, Franchini G, Funaro M, Cutroni M, Valier B, Toffanin T, Palagini L, Zerbini L, Folesani F, Murri MB, Caruso R, & Grassi L.

“Neural circuit disruptions of eye gaze processing in autism spectrum disorder and schizophrenia: an activation likelihood estimation meta-analysis.” *Research Square*. 2022. Ibrahim K, Iturmendi-Sabater I, Vasishth M, Barron DS, Guardavaccaro M, Funaro MC, Holmes A, McCarthy G, Eickhoff SB, & Sukhodolsky DG.

“Systematic review: the relationship between religion, spirituality and mental health in adolescents who identify as transgender.” *Journal of Gay & Lesbian Mental Health*, 1-18. 2022. Lekwauwa R, Funaro MC, & Doolittle B.

2023

“Biomarkers as prognostic determinants of epilepsy after post-acute central nervous system insults: a systematic review and meta-analysis (P3-5.017).” *Neurology*, 100(17S2): 3292. 2023. Misra S, Khan E, Lam T, Mazumder R, Eldem E, Gururangan K, Hickman LB, Goswami V, Funaro M, & Montaner J.

“Current status of clinical outcome measures in inclusion body myositis: a systematised review.” *Clinical and Experimental Rheumatology*, 41(2): 370-378. 2023. Roy B, Lucchini M, Lilleker JB, Goyal NA, Naddaf E, Adler B, Alfano LN, Malandraki GA, Focht Garand KL, Mochel D, Badrising U, Machado PM, Pagkatipunan R, Ramdharry G, Wang L, Funaro MC, Schmidt J, Kushlaf H, Schioppa E, Stipanovic K, Goyal N, d'Alessandro M, Conticini E, Cruz-Coble B, Lloyd TE, & International Myositis Assessment and Clinical Studies (IMACS) Inclusion Body Myositis Scientific Interest Group.

“Does this child with high blood pressure have secondary hypertension? The rational clinical examination systematic review.” *JAMA*, 329(12): 1012-1021. 2023. Nugent JT, Jiang K, Funaro MC, Saran I, Young C, Ghazi L, Bakhoun CY, Wilson FP, & Greenberg JH.

“Evaluating the validity of game-based assessments measuring cognitive function among children and adolescents: a systematic review and meta-analysis.” (Book chapter). In *Progress in Brain Research*. 2023. Aneni K, Gomati de la Vega I, Jiao MG, Funaro MC, & Fiellin LE.

“How do smoking, vaping, and nicotine affect people with epilepsy and seizures? A scoping review protocol.” *PLOS One*, 18(7): e0288120. 2023. Narrett JA, Khan W, Funaro MC, & Moeller JJ.

“Lessons learned and future directions: a scoping review of American Indian and Alaska Native participants in the National Drug Abuse Treatment Clinical Trials Network.” *Journal of Substance Use and Addiction Treatment*, 209081. 2023. Crouch MC, Venner KL, Wendt DC, Burlew AK, Baukol P, Funaro MC, Sorrell T, & Haeny AM.

"Mortality and functional outcomes in patients with post-stroke epileptic seizures: a systematic review and meta-analysis (S45-006)." *Neurology*, 100 (17S2): 3645. 2023. Misra S, Vazquez J, Eldem E, Silva LS, Mohidat S, Hickman LB, Khan E, Funaro M, Yasuda C, & Liebeskind D.

"Multidimensional assessment of access to medications for opioid use disorder across urban and rural communities: a scoping review." *International Journal of Drug Policy*, 112: 103931. 2023. Bommersbach T, Justen M, Bunting AM, Funaro MC, Winstanley EL, & Joudrey PJ.

"On the proportion of patients who experience a prodrome prior to psychosis onset-a systematic review and meta-analysis." *medRxiv*, 2023.2005. 2015.23290015. 2023. Benrimoh D, Dlugunovych V, Wright AC, Phalen P, Funaro MC, Ferrara M, Powers A, Woods SW, Guloksuz S, & Yung, AR.

"The state of evidence for social and emotional learning: a contemporary meta-analysis of universal school-based SEL interventions." *Child Development*. 2023. Cipriano C, Strambler MJ, Naples LH, Ha C, Kirk M, Wood M, Sehgal K, Zieher AK, Eveleigh A, McCarthy M, Funaro M, Ponnock A, Chow JC, & Durlak J.

"State of the art of participatory and user-led research in mental health in Brazil: a scoping review." *Cambridge Prisms: Global Mental Health*, 10: e21. 2023. Florence AC, Bocalini M, Cabrini D, Tanzi R, Funaro M, Jordan G, Davidson L, Drake R, Montenegro C, & Yasui S.

"Structural neuroimaging of hippocampus and amygdala subregions in post-traumatic stress disorder (PTSD): a scoping review." *Biological Psychiatry Global Open Science*. 2023. Ben-Zion Z, Korem N, Fine N, Katz S, Siddhanta M, Funaro MC, Duck O, Spiller TR, Danbock S, & Levy I.

"Weight change among patients engaged in medication treatment for opioid use disorder: a scoping review." *American Journal of Drug and Alcohol Abuse*, 1-15. 2023. Carr MM, Lou R, Macdonald-Gagnon G, Peltier MR, Funaro MC, Martino S, & Masheb RM.

**Rolando Garcia-Milian**

**2022**

"Librarians and bioinformatics communities working together to advance research and instruction." (Book chapter). In *Cases on Establishing Effective Collaborations in Academic Libraries*. Ed. Piorun M & Raboin R. 2022. Brandenburg MD & Garcia-Milian R.

"Proteomic profiling reveals an association between ALDH and oxidative phosphorylation and DNA damage repair pathways in human colon adenocarcinoma stem cells." *Chemico-Biological Interactions*, 368: 110175. 2022. Wang Y, Chen Y, Garcia-Milian R, Golla JP, Charkoftaki G, Lam TT, Thompson DC, & Vasiliou V.

**2023**

"The age of bone marrow dictates the clonality of smooth muscle-derived cells in atherosclerotic plaques." *Nature Aging*, 3(1): 64-81. 2023. Kabir I, Zhang X, Dave JM, Chakraborty R, Qu R, Chandran RR, Ntokou A, Gallardo-Vara E, Aryal B, Rotllan N, Garcia-Milian R, Hwa J, Kluger Y, Martin KA, Fernández-Hernando C, & Greif DM.

"Association of lesion location with post-stroke depression in China: a systematic review and meta-analysis." *EC Psychology and Psychiatry*, 12(3): 34-45. 2023. Luo X, Fang W, Ji J, Zhang Y, Garcia-Milian R, Wang Z, Tan Y, Wang S, Wang X, Guo X, & Luo X.

"Autologous humanized PDX modeling for immuno-oncology recapitulates features of the human tumor microenvironment." *Journal for ImmunoTherapy of Cancer*, 11(7): e006921. 2023. Chiorazzi M, Martinek J, Krasnick B, Zheng Y, Robbins KJ, Qu R, Kaufmann G, Skidmore Z, Juric M, Henze LA, Brösecke F, Adonyi A, Zhao J, Shan L, Sefik E, Mudd J, Bi Y, Goedegebuure SP, Griffith M, Griffith O, Oyedele A, Fertuzinhos S, Garcia-Milian R, Boffa D, Detterbeck F, Dhanasopon A, Blasberg J, Judson B, Gettinger S, Politi K, Kluger Y, Palucka K, Fields RC, & Flavell RA.

"Examining sex differences in responses to footshock stress and the role of the metabotropic glutamate receptor 5: an [18F]FPEB and positron emission tomography study in rats." *Neuropsychopharmacology*, 48(3): 489-497. 2023. Asch RH, Pothula S, Toyonaga T, Fowles K, Groman SM, Garcia-Milian R, DiLeone RJ, Taylor JR, & Esterlis I.

"Partnering with health sciences libraries to address challenges in bioimaging data management and sharing." *Histochemistry and Cell Biology*. 2023. Silkotch C, Garcia-Milian R, & Hersey D.

"Peripheral signature of altered synaptic integrity in young onset cannabis use disorder: a proteomic study of circulating extracellular vesicles." *World Journal of Biological Psychiatry*, 1-11. 2023. Ganesh S, Lam TT, Garcia-Milian R, Cyril D'Souza D, Nairn AC, Elgert K, Eitan E, & Ranganathan M.

**Alyssa Grimshaw**

**2022**

"Investigational venetoclax combination therapy in acute myeloid leukemia - a systematic review and meta-analysis." *Haematologica*, 107(12): 2955-2960. 2022. Shimony S, Rozental A, Bewersdorf JP, Goldberg AD, Stein EM, Grimshaw AA, Stone RM, DeAngelo DJ, Wolach O, & Stahl M.

"Non-communicable diseases and maternal health: a scoping review." *BMC Pregnancy and Childbirth*, 22(1): 787. 2022. Firoz T, Pincles B, Navrange N, Grimshaw A, Oladapo O, & Chou D.

"Randomized clinical trials of machine learning interventions in health care: a systematic review." *JAMA Network Open*, 5(9): E2233946. 2022. Plana D, Shung DL, Grimshaw AA, Saraf A, Sung JJY, & Kann BH.

**2023**

"The association of depression with mortality and major adverse limb event outcomes in patients with peripheral artery disease: a systematic review and meta-analysis." *Journal of Affective Disorders*, 320: 169-177. 2023. Scierka LE, Mena-Hurtado C, Ahmed ZV, Yousef S, Arham A, Grimshaw AA, Harris KM, Burg M, Vriens PW, Heyligers J, Lee M, Yazgan I, & Smolderen KG.

"Benefit of extended surveillance of low-risk pancreatic cysts after 5-year stability: a systematic review and meta-analysis." *Clinical Gastroenterology and Hepatology*, 21(6): 1430-1446. 2023. Chhoda A, Singh S, Sheth AH, Grimshaw AA, Gunderson CG, Sharma P, Kunstman JW, Sharma A, Ahuja N, Gonda TA, & Farrell JJ.

"Burden of bone disease in chronic pancreatitis: a systematic review and meta-analysis." *World Journal of Gastroenterology*, 29(8): 1374-1394. 2023. Chhoda A, Hernandez-Woodbine MJ, Addo NAA, Nasir SA, Grimshaw A, Gunderson C, Ahmed A, Freedman SD, & Sheth SG.

"Endometrial responses to bacterial and viral infection: a scoping review." *Human Reproduction Update*. 2023. Lindsay CV, Potter JA, Grimshaw AA, Abrahams VM, & Tong M.

"Estimated mortality with early empirical antibiotic coverage of methicillin-resistant staphylococcus aureus in hospitalized patients with bacterial infections: a systematic review and meta-analysis." *Journal of Antimicrobial Chemotherapy*, 78(5): 1150-1159. 2023. Carey GB, Holleck JL, Ein Alshaeba S, Jayakrishnan R, Gordon KS, Grimshaw AA, & Gunderson CG.

"Idiopathic myointimal hyperplasia of the mesenteric veins: a systematic review and individual patient data regression analysis." *Journal of Gastroenterology and Hepatology*. 2023. Rozner R, Gisriel S, Damianos J, Grimshaw AA, Rizwan R, Nawaz A, Chan K, Wan D, Pantel H, Bhutta AQ, Fenster M, Brandt LJ, Barbieri A, Robert ME, Feuerstadt P, & Li DK.

"Offspring neurodevelopmental outcomes born to parents with chronic inflammatory arthritis using antirheumatic therapies: a scoping review." *Seminars in Arthritis and Rheumatism*, 61: 152230. 2023. Chock EY, Dahal S, Grimshaw AA, Suter L, Liew Z, & Felson D.

"Ovarian absence: a systematic literature review and case series report." *Journal of Ovarian Research*, 16(1): 13. 2023. Chen HA, Grimshaw AA, Taylor-Giorlando M, Vijayakumar P, Li D, Margetts M, Pelosi E, & Vash-Margita A.



## Megan Nance

"Dark archives: a librarian's investigation into the science and history of books bound in human skin." (Book review). *Journal of the Medical Library Association*, 110(3):385–386. 2022.

"Playing for keeps: how academic libraries are prioritizing student mental health and well-being through play." *The Journal of Play in Adulthood*, 4(2): 162–176. 2022.

## Kate Nyhan

2022

"The association of marital/partner status with patient-reported health outcomes following acute myocardial infarction or stroke: protocol for a systematic review and meta-analysis." *PLOS One*, 17(11): e0267771. 2022. Zhu C, Tran PM, Leifheit EC, Spatz ES, Dreyer RP, Nyhan K, Wang S-Y, Goldstein LB, & Lichtman JH.

"Circulating miRNAs in the first trimester and pregnancy complications: a systematic review." *Epigenetics*, 1–11. 2022. Subramanian A, Weiss D, Nyhan K, Dewan A, & Jukic AMZ.

"Health effects of Indigenous language use and revitalization: a realist review." *International Journal for Equity in Health*, 21(1): 169. 2022. Whalen DH, Lewis ME, Gillson S, McBeath B, Alexander B, & Nyhan K.

"Interventions to mitigate vaping misinformation: protocol for a scoping review." *Systematic Reviews*, 11(1): 214. 2022. Kumar N, Hampsher S, Walter N, Nyhan K, & De Choudhury M.

"Maternal weight status and the composition of the human milk microbiome: a scoping review." *PLOS One*, 17(10): e0274950. 2022. Daiy K, Harries V, Nyhan K, & Marcinkowska UM.

"Psychosocial family-level mediators in the intergenerational transmission of trauma: protocol for a systematic review and meta-analysis." *PLOS One*, 17(11): e0276753. 2022. Mew EJ, Nyhan K, Bonumwezi JL, Blas V, Gorman H, Hennein R, Quach K, Shabanova V, Hawley NL, & Lowe SR.

"Sexual and gender minority health in the Middle East and North Africa Region: a scoping review." *International Journal of Nursing Studies Advances*, 4: 100085. 2022. Abboud S, Veldhuis C, Ballout S, Nadeem F, Nyhan K, & Hughes T.

"A suggested data structure for transparent and repeatable reporting of bibliographic searching." *Campbell Systematic Reviews*, 18(4). 2022. Haddaway NR, Rethlefsen ML, Davies M, Glanville J, McGowan B, Nyhan K, & Young S.

2023

"Association of marital/partner status and patient-reported outcomes following myocardial infarction: a systematic review and meta-analysis." *European Heart Journal Open*, 3(2), oead018. 2023. Zhu C, Tran PM, Leifheit EC, Spatz ES, Dreyer RP, Nyhan K, Wang S-Y, & Lichtman JH.

"Global prevalence of preterm birth among Pacific Islanders: a systematic review and meta-analysis." *PLOS Global Public Health*, 3(6). 2023. Wu B, Shabanova V, Arslanian K, Nyhan K, Izampuye E, Taylor S, Muasau-Howard B, Ekeroma A, & Hawley NL.

"Preterm birth among Pacific Islanders in the United States and the US-affiliated Pacific Islands: a systematic review and meta-analysis." *Birth*. 2023. Wu B, Arslanian KJ, Nyhan K, Suss R, Mahoney M, McElfish PA, Muasau-Howard BT, Ekeroma A, & Hawley NL.

"Scoping review protocol of multicomponent interventions to address cardiometabolic disease risk among Pacific Islander children." *PLOS One*, 18(1): e0280888. 2023. Choy CC, Nyhan K, Savusa K, Soti-Ulberg C, Rosen RK, Naseri T, Hawley NL, & Sharifi M.

## Judy Spak

"The pipeline starts in medical school: characterizing clinician-educator training programs for US medical students." *Medical Education Online*, 27(1): 2096841. 2022. Bahar RC, O'Shea AW, Li ES, Swallow MA, Allocco AA, Spak JM, & Hafley JP.

## Kaitlin Throgmorton

2022

"Evaluating California nursing homes' emergency preparedness for wildfire exposure." *Journal of the American Geriatrics Society*, 1–8. 2022. Festa N, Heaphy NM, Throgmorton KF, Canavan M, & Gill TM.

2023

"Assessment of regional nursing home preparedness for and regulatory responsiveness to wildfire risk in the western US." *JAMA Network Open*, 6(6): e2320207. 2023. Festa N, Throgmorton KF, Davis-Plourde K, Dosa DM, Chen K, Zang E, Kelly J, & Gill TM.

"Association of nursing home exposure to hurricane-related inundation with emergency preparedness." *JAMA Network Open*, 6(1): e2249937. 2023. Festa N, Throgmorton KF, Heaphy N, Canavan M, & Gill TM.

## PRESENTATIONS

2022

Batten J, Bautista C. "Generating clinical questions to find evidence and improve patient care." 26th Annual Connecticut Nursing Research and Evidence-Based Practice Conference.

Burgess R, Nyhan K, Freudenberg N, Ransom Y. "Corporate activities that influence population health: a review of the literature and proposed framework." American Public Health Association 2022 Annual Meeting and Expo.

Catalano AA, Yoon J, Fertuzinhos S, Gisslen M, Zetterberg H, Marra C, Farhadian S. "Distinct cerebrospinal fluid immune proteins mark neurosyphilis." Infectious Disease Week (IDWeek) 2022.

Fertuzinhos S, Spak J, Grossetta Nardini H, Gallagher J, Garcia-Milian R. "Investment in bioinformatics education by a medical library has created an unexpected professional niche for PhDs in the academic ecosystem." (Poster session). International Society for Computational Biology Annual Conference.

Fertuzinhos S, Throgmorton KF, Garcia-Milian R. "Making waves on instruction format: re-designing stand-alone workshops into a contextualized and collaborative training series: a case study." (Poster session). North Atlantic Health Sciences Libraries Annual Meeting.

Ganesh S, Lam TT, Clark Nairn A, Garcia-Milian R, Eitan E, Ranganathan M. "Peripheral signature of altered synaptic integrity in young onset cannabis use disorder: an exploratory proteomic study of circulating extracellular vesicles." World Congress of Psychiatric Genetics.

Grafe M. "Now and future: NYAM Library at 175." Then & Now: The Past and Future of Medical Libraries, New York Academy of Medicine.

Haugh D. "DEIB resources at the Cushing/Whitney Medical Library." 2022 North Atlantic Health Science Libraries Annual Meeting.

Haugh D. "Digital and social media marketing and outreach fundamentals." (Webinar). Engage Your Community by Uniting Marketing and Outreach Library Journal and School Library Journal Webinar Series.

Katz M, Mszar R, Grimshaw AA, Spatz ES. "Mobile health interventions and remote blood pressure monitoring in underserved populations: a systematic review and meta-analysis." (Poster session). American Heart Association's Circulation Conference.

Nance M, Norton M. "Mail to Address: bridging the gap between patrons and physical collections." (Poster session). North Atlantic Health Science Libraries Annual Meeting.

Nyhan K, Premji Z, Šimová T, Tay A. "Performance and time savings of semi-automated title-abstract screening in scoping reviews." (Poster session). What Works Global Summit.

Peng M, Rhodes E, Aloe C, Hennein R, Deyling M, Nyhan K, Schwartz A, Zhou K, Kataque M, Spiegelman D, & Hagaman A. "How are qualitative methods used in implementation science research? Results from a systematic scoping review." (Poster session). 15th Annual Conference on the Science of Dissemination and Implementation.

Rossi R, Meurer L, [Grimshaw A](#), Strazzabosco M. "Racial disparities in hepatocellular carcinoma in the United States: a scoping review." (Poster session). American Association for the Study of Liver Diseases: The Liver Meeting.

Rozner R, Gisriel SD, Damianos J, [Grimshaw AA](#), et al. "Idiopathic myointimal hyperplasia of mesenteric veins: a systematic review and individual patient regression analysis." (Poster session). American College of Gastroenterology Conference.

## 2023

Anueyiagu C, [Batten J](#), Span P. "The COVID-19 pandemic: exploration of nurse leaders' experiences managing the clinical environment during a crisis." 15th Annual Janet Parkosewich Nursing Research and Evidence-Based Practice Conference.

[Batten J](#), [Brackett A](#), [Grossetta Nardini HK](#). "Editors benefit from librarian involvement in peer review." (Poster session). Council for Scientific Editors Annual Meeting.

Choy CC, [Nyhan K](#), Savusa K, Soti-Ulberg C, Rosen RK, Naseri T, Hawley NL, Sharifi M. "Multicomponent lifestyle interventions to address cardiometabolic disease risk among Pacific Islander children: a scoping review in progress." (Poster session). ACTS23.

Comer CC, [Nyhan K](#), Splenda R. "Information retrieval for evidence synthesis: how researchers in limited-resource environments can do comprehensive searches." (Webinar). 2023 Campbell Collaboration Webinar Series.

[Del Biondo K](#), [Nardini HKG](#), [Nyhan K](#). "Open access viewpoints and self-archiving decisions of public health faculty at Yale." (Poster session). Medical Library Association Annual Meeting.

[Del Biondo K](#), [Nardini HKG](#), [Nyhan K](#). "Some people have access, and some people don't: exploring open access viewpoints & publishing decisions of public health faculty at Yale." (Poster session). Society for Scholarly Publishing.

Festa N, [Throgmorton KF](#), Plourde K, Gill TM. "Nursing home wildfire exposure and preparedness." (Poster session). American Geriatrics Society Conference.

[Grafe M](#). "Digging into digital medical historical resources." History of the Health Sciences Caucus, Medical Library Association. 2023.

[Grafe M](#), Mahoney A, Nuriddin A, Smith K, Thompson C. "Do less harm: ethics for health historians." Librarians, Archivists, and Museum Professionals in the History of the Health Sciences Annual Conference.

[Grafe M](#). "Medical Heritage Library, Inc. Opening access to seven centuries of medical history." UCSF Digital Health Humanities Symposium.

Marhoffer E, Gunderson C, Alshaeba SE, Holleck J, [Grimshaw A](#), Rudikoff B. "Gender disparity in academic rank: a systematic review and metaanalysis." (Poster session). 2023 National Meetings of the Society of Hospital Medicine.

Carey G, Holleck J, Alshaeba SE, Jayakrishnan R, Gordon K, [Grimshaw A](#), Gunderson C. "Effect of empiric antibiotics against MRSA: systematic review and meta-analysis." (Poster session). Society of Hospital Medicine Converge.

[Haugh D](#). "Engaging your community: strategies for innovative social media and content marketing." (Webinar). Marketing and Outreach Strategies to Engage Your Community Library Journal and School Library Journal Webinar Series.

[Nance M](#). "Treat yourself: holistic outreach at an academic medical library." (Poster session). American Library Association Annual Meeting.

Rivera PA, Shen LL, Atayde AMP, Sun HM, Ahluwalia A, Young B, [Nardini H](#), Del Priore LV. "Genotype and phenotype association in patients with choroideremia: a systematic review and meta-analysis from 618 individual eyes." ARVO Annual Meeting.

Siwakoti A, Khadka S, [Grimshaw A](#), Giri S. "The impact of immunoparesis on outcomes of patients with newly diagnosed multiple myeloma: a systematic review." 2023 AAAAI Annual Meeting.

[Throgmorton KF](#). "Walk the talk: turning research data theory into practice." Research Data Access and Preservation (RDAP) Summit.

[Throgmorton KF](#), Festa N, Doering M, Carpenter C, Gill TM. "Enhancing your research: how to collaborate effectively with medical and data librarians." (Webinar). CLIN-STAR Coordinating Center.

Wang L, [Grimshaw A](#), Mezzacappa C, Larki NR, Yang YX, Justice A. "Do polygenic risk scores add to clinical data in predicting pancreatic cancer? A scoping review." American Association for Cancer Research Annual Meeting.

## ACKNOWLEDGMENTS

[Alexandria Brackett](#) in "What triage recommendations are available for emergent or urgent musculoskeletal conditions?" *Clinical Orthopaedics and Related Research*.

[Alyssa Grimshaw](#) in "Advancing peripheral artery disease quality of care and outcomes through patient-reported health status assessment: a scientific statement from the American Heart Association" *Circulation*;  
"The independent effect of exercise on biopsy-proven non-alcoholic fatty liver disease: a systematic review" *Clinical and Molecular Hepatology*;  
"Dysmenorrhea, pelvic pain, endometriosis, and functional abdominal pain" *Adolescent Gynecology*;  
"In the clinic alcohol use" *Annals of Internal Medicine*.

[Kate Nyhan](#) in "Overcoming vaccine hesitancy for future COVID-19 and HIV vaccines: lessons from measles and HPV vaccines." *Current HIV/AIDS Reports*;  
"Air quality sensor lending libraries: bringing home public health." *Environmental Health Review*;  
"Jot: guiding journal selection with suitability metrics." *Journal of the Medical Library Association*;  
"Diet and physical activity interventions in Black and Latina women with breast cancer: a scoping review." *Frontiers in Oncology*;  
"Quantifying mycobacterium tuberculosis transmission dynamics across global settings: a systematic analysis." *American Journal of Epidemiology*.

[Dorota Peglow](#) and [Mary Hughes](#) in "On the proportion of patients who experience a prodrome prior to psychosis onset-a systematic review and meta-analysis." *medRxiv*;  
"Structural neuroimaging of hippocampus and amygdala subregions in post-traumatic stress disorder (PTSD): a scoping review." *Biological Psychiatry Global Open Science*;  
"Evaluating the validity of game-based assessments measuring cognitive function among children and adolescents: a systematic review and meta-analysis." *Progress in Brain Research*.

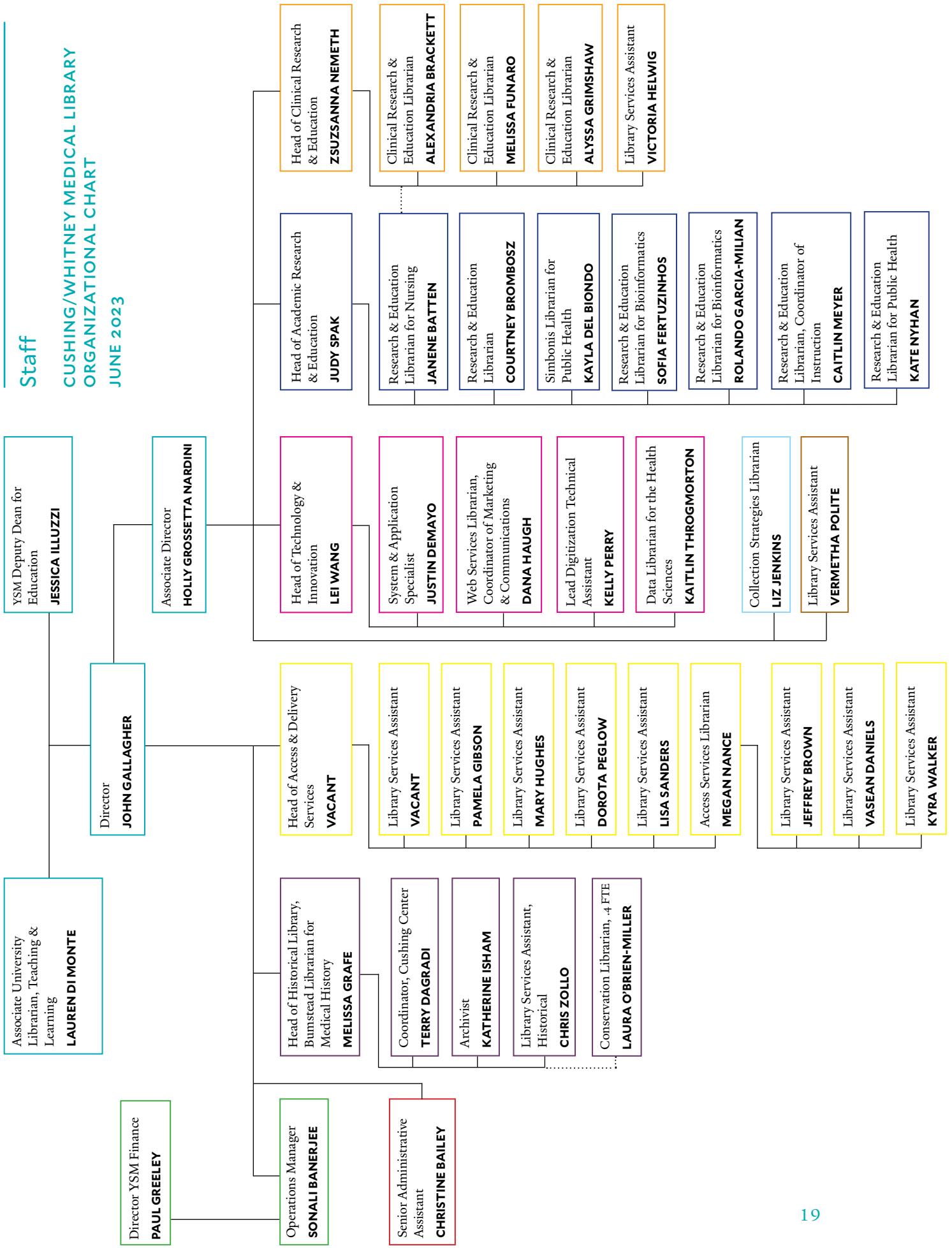


**Staff**

**CUSHING/WHITNEY MEDICAL LIBRARY**

**ORGANIZATIONAL CHART**

**JUNE 2023**





A rare materials session in the Historical Library for participants in the “New Approaches to the Field of Early Modern Works on Paper” workshop organized by Yale University Art Gallery

*Photo: Terry Dagradi*



[library.medicine.yale.edu](http://library.medicine.yale.edu)



[instagram.com/yalemedhistlib](https://www.instagram.com/yalemedhistlib)



[vimeo.com/yalemedlib](https://vimeo.com/yalemedlib)