

Harvey Cushing / John Hay Whitney  
Medical Library, Yale University

*Annual Report, 2015–2016*





## Contents

- 2 From the Director
- 3 Special Report:  
75th Anniversary
- 5 Research Services
- 8 Clinical Services
- 9 Education Services
- 11 Collections
- 12 Library as Place
- 14 Exhibits
- 15 Major Gifts
- 16 Donors
- 17 Staff Highlights
- 19 Staff

Cover: Dedicated 75 years ago by the Yale Class of 1891 in affectionate memory of their classmate Harvey Cushing, the Cushing Rotunda is perhaps the most cherished and distinctive space within the Medical Center. A gift of \$1.5 million would enable a named restoration project to return the Cushing Rotunda to its original luster and beauty, so that it can continue to inspire scholars and clinicians for years to come.  
*Photo: Terry Dagradi*

## From the Director

“So when a doctor finds himself lost or astray over some difficult problem, there’s just one thing for him to do, to betake himself to a library, a place whence knowledge radiates, there to get a fresh start. The soul of an institution comes to reside in the library.” — *Harvey Cushing, M.D., 1926*

The past year has been an occasion of great celebration as we mark the 75th anniversary of the founding of the library by Harvey W. Cushing, John F. Fulton, and Arnold C. Klebs. Their vision for a library inspired their remarkable gift to Yale, and it continues to inspire us. Cushing’s insight, as relevant today as it was ninety years ago, captures a core and enduring objective of medical libraries — to help people discover answers to questions and find solutions to problems.

In 1941, users pored over texts and journals in the physical library located here in the heart of the School of Medicine. Today, however, the library’s reach extends well beyond its walls, with vast online collections and resources, and the library’s role has expanded significantly in ways its founders could hardly have imagined. The library now provides researchers with seamless access to more than 23,000 online medical journals, almost ten times the number of journal titles we ever purchased in print! Clinical information resources such as UpToDate, DynaMed Plus, and ClinicalKey are integrated into Epic, the health system’s electronic medical record, providing clinicians full and easy access to library resources they can use at a patient’s bedside. The library licenses a growing list of bioinformatics tools like MetaCore and Ingenuity Pathway Analysis to facilitate analysis of genomic data critical to new research in personalized medicine.

The library makes its resources available to users any place and any time, not only databases and analytic tools, but also scholarly literature. Our resource sharing team can even deliver to your inbox scans of articles we don’t own, within one day.

Although much has changed since 1941, library staff continue to play the vital role that Cushing envisioned. Like our collections, the librarians go



*Photo: JoAnne Wilcox*

well beyond the library’s walls to collaborate with researchers. You will find clinical librarians providing research support wherever they can help busy clinicians, from radiology reading rooms, to intensive care units, to operating room suites. Research and education librarians participate in curriculum redesign, help film anatomical dissection videos, teach information research skills, and ensure access to the best resources. Our librarians support researchers in the basic sciences by introducing bench scientists to new bioinformatics tools and resources and helping them identify alternatives to animal models. This wide array of services relies on librarians with diverse and complementary skill sets who share the common goal of facilitating scholarship and education at the medical center.

In this annual report you will see many examples of the vital role the library and our staff play in fulfilling the missions of the thousands of clinicians, researchers, and scholars we serve.

John Gallagher

## Special Report: 75th Anniversary

Throughout 2016, the Cushing/Whitney Medical Library (CWML) has been celebrating its 75th anniversary, fondly remembering its founders, recording its recent history, and looking toward its bright future. The year of celebration began with much merriment at the January kick-off event. Friends and patrons gathered to visit with Finn, our therapy dog; for selfies with Harvey Cushing; and for cake adorned with our anniversary logo. This event launched our initiative to record more of the oral and written history of the CWML. We collected written and video vignettes of treasured stories and impressions from alumni and students about what makes the CWML special. Reminiscences and experiences, past and present, continued to be captured throughout the year. These videos, narratives, and poems will be preserved in the Historical Library archive. You can enjoy some of the video vignettes at <http://vimeo.com/channels/yalemedlib75>.

In April, friends of the library gathered for a lecture sponsored by the Associates of the Cushing/Whitney Medical Library. Dr. Ruslan Medzhitov, David W. Wallace Professor of Immunobiology, presented “Immune System in Health & Disease,” vividly illustrating how our bodies react to and defend against potentially noxious invaders. The associates were delighted to see faculty and students attending this enlightening lecture in the library.

Our 75th celebrations inspired three exhibits, on view from April to September. *The Medical Library at 75*, curated by former and current Historical Librarians Toby Appel and Melissa Grafe, explored the creation and development of the library. The exhibit described how founders Harvey Cushing, John Fulton, and Arnold Klebs envisioned a medical school library; and documented the changing nature of collections, spaces, services, researchers, and staff. A case displaying technology from the past provoked guffaws from the new generation of digital-native students. Just as the CWML supported early adopters of mobile devices in the 1980s, we continue to facilitate



research using today's emerging technologies such as bioinformatics and geographic information systems.

A photographic exhibition, *The Life of the Medical Library*, documented the world of the CWML today. Librarians work within hospital units, researchers delve into collections online and in the library, classes use Historical Library collections, and visitors tour and learn in the Cushing Center. The exhibit also displayed the winning photographs from a recent Instagram Challenge

Students taking selfies with Harvey Cushing

Librarians Janene Batten and Mark Gentry interviewing Dr. Thomas Duffy

Librarian Melissa Funaro and guests celebrating the library's 75th anniversary

Photos: Terry Dagradi





L to R: John Gallagher, Cushing's great-great-grandson Kevin Cushing, Dr. Gordon Shepherd, Cushing's granddaughter Kate Whitney, Dr. Dennis Spencer, Cynthia Tsay  
Photo: Terry Dagradi

## We asked, you answered!

### YOU LOVE THE LIBRARY BECAUSE...

Grad school requires studying, and the group study rooms here are the best for that. Thanks!

The 24/7 room is a lifesaver!

The librarians are really great!

There are so many resources and everyone is very helpful!

Finn the dog!!

Great place to study!

It has the friendliest and most helpful librarians!

Footrests under every table!

I love the environment. It is intellectually stimulating!

It is a center for our learning community.

celebrating the CWML from the perspective of our patrons. We are happy that the exhibit was accessible not only in our physical space, but also to our almost 7,000 Instagram followers.

*The Founding Collection of Prints and Drawings: Bequest of Clements C. Fry* featured selections from Fry's collection of seventy-five works on paper that hung in the long entrance corridors of the library when we first opened in 1941. The exhibit also included recent acquisitions complementing Fry's original collection.

The pinnacle of the 75th celebrations was an exceptional Founders Celebration talk during Alumni Weekend, "Harvey Cushing and John Fulton: Two Founders Bonded by Science, Medicine, and Books." Dr. Dennis D. Spencer, Harvey and Kate Cushing Professor of Neurosurgery, and Dr. Gordon M. Shepherd, Professor of Neuroscience, described the professional and personal relationships among bibliophiles Cushing, Fulton, and Klebs in a discussion moderated by Cynthia Tsay, YSM '18. Members of the Cushing family, including granddaughter Kate Whitney and great-grandson Harvey Cushing, were honored guests.



Cushing's great-grandson Harvey Cushing  
Photo: Terry Dagradi

### JOHN GALLAGHER APPOINTED EIGHTH MEDICAL LIBRARY DIRECTOR

During our 75th anniversary year, John Gallagher joined the list of illustrious CWML directors. As the eighth director, he has pledged to continue the tradition of ensuring the highest quality of services, resources, and collections to support the research, education, and clinical missions of the medical center community.

John's service has been rich and varied; his experiences, understanding of issues facing medical libraries, willingness to experiment, and ability to build successful networks are the qualities that are needed for the continued success of the CWML. Since 1999 John has served the Yale community, regularly earning promotions based on his eagerness to learn and his deep commitment to customer service.

Susan Gibbons, University Librarian and Deputy Provost for Collections & Scholarly Communication, commented, "John's appointment is fantastic. Not only do we add a talented colleague to the library's senior leadership team, but John's career demonstrates the opportunities for career advancement at Yale University Library."

## Research Services

### EXPANDING SUPPORT FOR SYSTEMATIC REVIEWS

CWML staff play an integral role in supporting systematic reviews written by Yale and Yale New Haven Hospital researchers in three ways: providing seamless access to evidence in the biomedical literature; helping researchers build their search skills; and, on selected projects, joining the team to develop, test, execute, and document comprehensive search strategies.

The methodology of systematic reviews and meta-analyses can deliver trustworthy, field-changing evidence—but only if researchers have succeeded in gathering *all* the relevant information. When the goal is a complete summary of relevant biomedical literature, librarians can articulate the relevant concepts in controlled vocabulary terms and keywords, and revise those searches for recall and precision in all the appropriate abstracting and indexing databases.

So how do librarians construct transparent and reproducible searches of the biomedical literature? When researchers ask us to join a systematic review team, we discuss the research question and identify a small set of known articles that we'll use to test the search strategies we develop. If even one of these known articles is *not* in the results set of a proposed search strategy, we must revise the strategy so that it captures all potentially relevant articles.

### YALE MESH ANALYZER

To help researchers and librarians refine search strategies, Lei Wang, Instructional Design Librarian, and Holly Grossetta Nardini, Research & Education Librarian, created the Yale MeSH Analyzer. MeSH stands for Medical Subject

Headings: the standard descriptive terms assigned to articles in MEDLINE by experts who identify each article's key concepts. By analyzing the subject headings associated with each article in the testing set of known relevant articles, librarians can improve searches. This concept of MeSH analysis was originally developed by Jan Glover, Acting Head of Curriculum & Research Services; the methodology is an important part of our search validation process.

The Yale MeSH Analyzer is a new Web-based tool (<http://mesh.med.yale.edu/>) to make MeSH analysis more efficient. When a researcher inputs a set of article identifiers from MEDLINE, the MeSH Analyzer creates an easy-to-scan Excel or HTML grid to show indexing similarities and differences. In addition to MeSH terms, the MeSH Analyzer can display author-assigned keywords, article titles, and abstracts. This allows expert searchers to quickly identify problems with searches, find new terms and term variants, and make refinements to improve retrieval. The MeSH Analyzer thus streamlines the search process for evidence-based systematic reviews.

Last October, Holly and Lei presented the Yale MeSH Analyzer to great accolades at the North Atlantic Health Sciences Libraries conference. An enhanced version of the tool was released in May 2016 and presented at the Medical Library Association annual meeting in Toronto, where it was voted “top paper of the day” by practicing medical librarians from the United States, Canada, and the world. Both *MLA News* and the *Journal of the Medical Library Association* published articles featuring this tool, and usage continues to grow. Librarians worldwide have adopted the Yale MeSH Analyzer because it helps them develop better systematic searches faster.

### MESH ANALYZER STATISTICS

7,486 users from 98 countries

12,298 sessions

25,699 page views

(as of August 21, 2016)

### COVIDENCE

Systematic reviews are complex projects—and sadly, some valuable projects languish. That's why the CWML now provides the Yale community with a new tool to improve the quality and speed of screening and data extraction, Covidence. Research teams collaborating with medical librarians on systematic reviews can now use Covidence to manage their bibliographic data, PDFs, and forms for risk of

bias and data extraction. This online platform, recommended by the Cochrane Collaboration and by CWML librarians who participated in beta testing, even lets researchers do title and abstract screening on their phones! Any tool that makes data management and screening easier will save researchers time and effort. We expect that Covidence will help more researchers complete and publish more of the systematic reviews that they start — because, after all, only completed and published reviews will change practice.

#### ANIMAL USE ALTERNATIVES SEARCHING

Systematic reviews are one important strand of collaboration with researchers; another involves searching for animal use alternatives in the Institutional Animal Care and Use Committee (IACUC) process. Researchers in medicine and basic sciences at every university are familiar with federal animal welfare requirements enforced by

the IACUC — but researchers at Yale will be surprised by the responsive support they receive from the CWML in completing the literature searches required before including painful or distressing procedures in their protocols. Five librarians in the Research and Education department regularly meet with PIs and lab managers to design comprehensive searches about the “Three Rs.”

Replacement, refinement, and reduction are the framework for an IACUC literature search. In the literature, are there examples of researchers replacing animals with simulations, in vitro methods, or phylogenetically lower animals? Could the researchers refine their protocol by making procedures less painful, making life in the lab less stressful, or providing a humane endpoint? Could the researchers reduce the number of animals in the experiment while maintaining statistical validity? The researchers must answer these questions themselves — but librarians help



Members of our Document Delivery team  
Top: Aletia Garvey; Bottom: Velma Williams (L)  
and Dorota Peglow (R)  
Photos: Melanie Norton

“The USDA inspector was especially enthusiastic about the work Rolando has done establishing a formal library program to assist investigators in seeking alternative procedures. This is terrific and, in addition to being a good thing in and of itself, reflects well on Yale’s dedication to the humane care and use of animals.”

— Steven M. Girvin, Deputy Provost for Research



Rolando García-Milian  
Photo: JoAnne Wilcox



by identifying relevant articles from bibliographic databases, including PubMed, MEDLINE, Embase, Web of Science, Scopus, AGRICOLA, CAB Abstracts, FEDRIP, ALTBIB, and Altweb.

CWML's IACUC search service depends not only on librarians who collaborate with researchers to craft an appropriate search for a protocol, but also on the crackerjack document delivery team who provide the relevant articles on a tight turnaround. The CWML also recognizes Biomedical Sciences Research Support Librarian Rolando García-Milian for his service on the Yale IACUC. His work was acknowledged by the USDA inspector, who complimented him enthusiastically for this contribution. The CWML takes pride in the work of Rolando and his colleagues supporting IACUC searches. This initiative is just one more way librarians are using their information retrieval expertise to support research on the medical campus.

#### RESEARCH FELLOWS

Dr. Rebecca Brannon, Assistant Professor, History and Interdisciplinary Liberal Studies at James Madison University, visited the CWML thanks to the 2015–2016 Ferenc Gyorgyey Research Travel Grant. Dr. Brannon's project, *Did the Founding Fathers Live Too Long?*, investigates how the American Revolution altered and shifted attitudes toward aging and masculinity. She explored the library's collections on aging and longevity in medical discourse between 1600 and 1820.



Rebecca Brannon

The Historical Library sponsored, in collaboration with the Beinecke Library, four research fellows from the Consortium for History of Science, Technology and Medicine. They conducted their research in multiple libraries in the Yale system. Several fellows researched the papers of polio experts and epidemiologists John Rodman Paul and Dorothy Horstmann.

The Stanley Simbonis, M.D. Fellowship, created last year thanks to the generosity of Stanley Simbonis '53 YC, '57 M.D., provides a wonderful opportunity to attract a rising star in our field to the CWML. This year we are seeking to host a visiting fellow from one of several national library fellow programs. This is a mutually beneficial relationship that helps our library investigate and launch new services and opportunities, and provides a junior librarian with the experience of working within one of the finest health sciences libraries and medical centers in the country.

“Thank you so much for your meticulous and thorough work. We are quite amazed at the depth and clarity of these searches, and we will certainly use them for guidance in the future.”

—Yale researcher

“I am grateful to the CWML for its support of my project and greatly appreciate the opportunity to investigate an inquiry first raised by Cushing nearly one hundred years ago.”

—Thanks from a recent fellow

## Clinical Services

### CLINICAL SUPPORT TOOLS: UPTODATE/ DYNAMED PLUS

Clinical support tools provide evidence that helps clinicians make informed patient-care decisions, but these resources are also among the most expensive licensed by the library. As costs for these online resources continue to rise, it's imperative that the library carefully consider purchases and renewals. The CWML, which has been licensing UpToDate for more than a decade, acquired a one-year trial for a new point-of-care tool, DynaMed Plus, to determine if it might be a viable and cost-effective alternative to UpToDate.

A task force made up of clinicians from Yale New Haven Hospital (YNHH) and the Yale School of Medicine (YSM) and CWML librarians conducted a careful analysis of both tools. Librarians facilitated focus groups to better understand the use and perceptions of UpToDate and DynaMed Plus. Librarians also investigated which point-of-care clinical decision-making resources our peer institutions license. Based on the information the team gathered, and skillful negotiations with UpToDate for more favorable pricing, all stakeholders agreed to renew the license for UpToDate for the next three years, and DynaMed Plus for the next full year. We will gather more information on how our constituents are using DynaMed Plus over the next year. The CWML is committed to providing clinicians, faculty, students, staff, and trainees with the best tools for their work at a sustainable price. We appreciate the assistance of everyone who weighed in on the evaluation and look forward to your continuing feedback.

### SUPPORTING YNHH NINETY-DAY CLINICAL REDESIGN TEAMS

To support hospital priorities, clinical librarians expanded their efforts to include support for the hospital's ninety-day clinical redesign efforts. Interdisciplinary clinical redesign teams fast-track clinical improvements in different care processes to improve the quality of care for patients. Clinical librarians worked with members of redesign teams to support their information needs by performing

literature searches and selecting materials pertinent to their area of investigation, such as children's sepsis, patient mobilization, thoracic surgery blood utilization, and cellulitis care redesign. This work informed the development of ongoing evidence-based care in the hospital setting.

### SUPPORT FOR GRADUATE MEDICAL EDUCATION

Librarians work closely with the Graduate Medical Education programs of their assigned departments. We provide orientations to new trainees, attend patient-care conferences, participate in ward rounds, and present didactic and hands-on training sessions for residents and fellows. Librarians meet with residents, fellows, and teaching faculty at the Saint Raphael campus. Support for locations outside of New Haven has increased as the YSM/YNHH clinical footprint expands to locations such as the YNH Children's Hospital at the Bridgeport Hospital campus, Orthopaedics at the Milford Hospital campus, and the North Haven Medical Center on Devine Street. As the clinical enterprise grows, the number of residents and fellows supported by the CWML continues to increase.

Accreditation Council for Graduate Medical Education requirements put increased emphasis on scholarship in residency and fellowship programs. We have responded to these needs by increasing our support for scholarly activities. Librarians have offered targeted trainings on research techniques in a number of programs including Dentistry, Oral and Maxillofacial Surgery, Nephrology, Infectious Diseases, Pediatrics, and Plastic Surgery. We are proud that many programs consider us an integral part of their educational initiatives.



## Education Services

### EDUCATION AT THE YALE SCHOOL OF PUBLIC HEALTH

The CWML welcomed Kate Nyhan as the librarian supporting the Yale School of Public Health (YSPH). Kate works with YSPH faculty, students, trainees, and staff to support research and education. She immediately started making connections: meeting faculty and staff, visiting classes to discuss literature searching, consulting with students in teams and one-on-one, showing people “instant evidence” to answer or contextualize their questions after talks by retrieving relevant articles on her iPad, delivering workshops in departments – even networking at happy hour!

All this activity is in the service of the educational mission of YSPH. The core competencies for public health professionals mention “evidence” two dozen times. Retrieving evidence, evaluating evidence, synthesizing evidence, and contributing to the public health evidence base – these are the skills that students and trainees are here to develop. With her expertise in biomedical literature, scholarly communications, research data management, and geographic information systems, Kate is here to help them.

### C&T SUMMER TRAINING AND DEVELOPMENT

While the CWML offers workshops year-round to all comers – on PubMed, EndNote, UNIX, bioinformatics, research data management, and more – summer brings a special workshop series: the C&T Summer Training and Development

program for Yale’s clerical and technical staff. Librarians hosted eleven workshops about tools and resources staff can use to increase productivity. Traditional library topics were popular, including PubMed, EndNote, and RefWorks. So were workshops drawing on the expanded skill sets of today’s librarians, including research data management and two sessions (because of strong demand) on My Bibliography and SciENcv, NCBI’s tool for grant reporting, compliance, and biosketches. Participants gave positive feedback – “very informative,” “more info than I had expected,” “keep doing what you are doing.” Even better, participants have returned to the library for more workshops and asked librarians to deliver tailored sessions in their departments.

### CLASSES WITH THE HISTORICAL LIBRARY

Building on their successful model for using special collections with large courses, John R. Bumstead Librarian for Medical History Melissa Grafe and Curator for Prints and Drawings Susan Wheeler offered hands-on sessions to 350 undergraduates in the class *Minds and Brains in America*, taught by Henry Cowles, Ph.D. Over two and a half days, students discussed the psychology of advertising using smoking advertisements from the William Van Durn Tobacco Advertisement Collection and public health posters from the Historical Library. These sessions provided students hands-on experience with advertising techniques across many decades



Kate Nyhan discussing a literature search with Fredua Akosa, M.B.Ch.B., YSPH student in the Advanced Professional M.P.H. Program

*Photo: Kelly Perry*



Kate Nyhan teaching a C&T summer class on RefWorks

*Photo: Kelly Perry*

**12,150**

reference questions, referrals, and research consultations

**37**

faculty members trained to create 70 videos for the flipped curriculum

**94,924**

views of online tutorials

**366**

classes and orientations provided by the library

**2,618**

links to library resources provided for 73 courses

**7,270**

articles sent to our patrons through our Scan and Deliver service

**13,319**

articles and books borrowed from other libraries for our patrons

**12,394**

articles and books lent to other libraries

and reinforced the themes taught in the Minds and Brains lectures.

Melissa Grafe met with nearly thirty senior thesis writers in the Program in the History of Science and Medicine. As part of the process in developing a thesis, Melissa helps seniors start their research and excites the students about possibilities for their chosen topic. One grateful senior thesis writer told her, "Thanks so much again for all your help with the thesis; I'm currently in the process of going through all the resources we found, lots of great stuff!"

Thanks to Historical Library staff, rare and authentic materials are integrated into classes across the disciplines: Photography and Science, History of the Body, Women and Medicine, Mental Illness and Crime, Global Health, Global Malaria, Gender and Science in Medicine, Art of the Printed Word, and Biomedical Futures.

Melissa Grafe and Susan Wheeler lead a hands-on session for Henry Cowles's Minds and Brains class

*Photo: Terry Dagradi*

## New classes offered by CWML

The VERY Basics of the Unix Command Line

Expert Googling

Understanding Research Impact

Managing Research Data

GIS series:

Searching Geospatial Literature

Working with Census Data for Social  
Determinants of Health

Choosing the Platform for Your Project

Making Sense of Genetic Variation





Collections

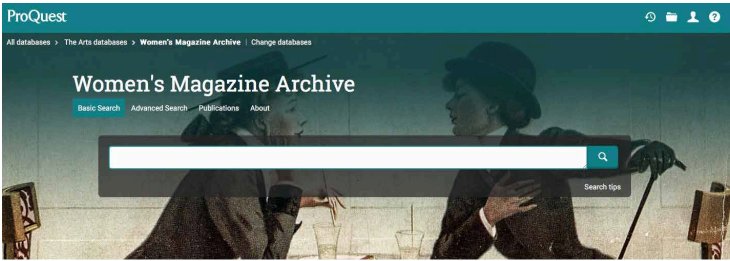
The library continues building its varied collections through patron-initiated requests and ongoing review of our existing collections. A selective list of our exciting acquisitions follows.

LIBRARY-LICENSED RESOURCES AND TOOLS IN THE BIOINFORMATICS RESEARCH WORKFLOW

In order to provide relevant services, avoid duplication, and foster collaboration with other units on campus, it is important for the CWML to understand the research cycle of high-throughput omics data at Yale University. The library licenses several resources and tools to assist researchers with their work and also uses the content of these resources to provide bioinformatics services, including dozens of training sessions and consultations. Researchers utilize these tools at different points in the bioinformatics research workflow. Partek Flow, a newly licensed resource, is used in primary and secondary analysis of bioinformatics data. BioCyc, Human Gene Mutation Database, Ingenuity Pathway Analysis, and MetaCore are all end-user annotation tools for tertiary analysis of the data.

NEW POINT-OF-CARE TOOL: DYNAMED PLUS

The library now provides access to DynaMed Plus, a new clinical support tool that helps clinical staff determine optimal patient care paths and provides students with a valuable learning tool. The resource is available through the CWML’s Web site, on every clinical workstation, and within Epic. A mobile application is also available. DynaMed Plus



One of our new databases, Women’s Magazine Archive

content is edited by physicians who follow a strict, evidence-based methodology to select the best and most appropriate evidence. Physician editors in more than twenty different specialties peer-review every topic and confirm the content’s clinical applicability. DynaMed Plus includes the American College of Physicians’ ACP Smart Medicine; the Micromedex Clinical Knowledge Suite; and overviews, recommendations, calculators, graphics, and images.

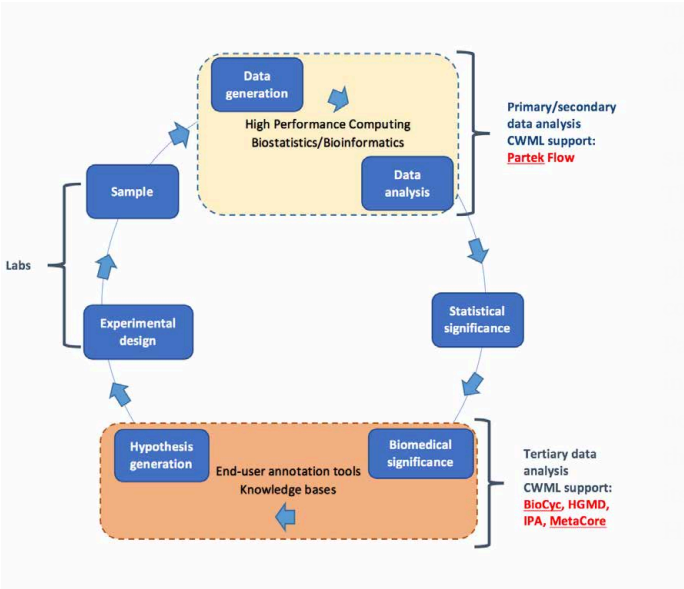
NEW DATABASES

The Historical Library added Popular Medicine in America, 1800–1900, a database of documents held by the Library Company of Philadelphia. This fascinating collection showcases the development of “popular” medicine during the nineteenth century through an extensive range of materials, from trade cards to self-help guides, aimed at the general public. The Historical Library also contributed funds for the purchase of the Women’s Magazine Archive I, containing popular magazines such as *Better Homes and Gardens*, *Ladies’ Home Journal*, and *Good Housekeeping*. All of these magazines contain medical advice and information, often sought by student researchers working on theses and dissertations.

SELECTED HISTORICAL LIBRARY ACQUISITIONS

The Historical Library acquired eighty-two new items, including books, manuscripts, and pamphlets. Highlights include a herbarium from 1761, compiled by Jean Seris, a student in surgery in Paris. Specimens in this album of dried plants include stems, leaves, and flowers. The captions, neatly written in ink on pieces of paper glued onto the pages, provide the name of the plant in Latin, its medical uses, and sometimes brief recipes. The Historical Library also acquired letters, newsletters,

Left: Research cycle of high-throughput omics data showing some of the CWML resources and tools that support secondary and tertiary data analysis



and photographs from women involved in the American Fund for French Wounded in Paris during World War I, and several handwritten volumes of medical remedies and recipes, including a 1545 English manuscript.

### NEW DRAWINGS AND POSTERS

Sixty-two new works were acquired for the collections of prints, drawings, and posters. These include drawings by René Georges Hermann-Paul pertaining to abortion circa 1920 and additional works by artist/activist Sue Coe on Ebola, war, fast food, and factory farming. Of interest to researchers working on transgender issues, the CWML acquired a very rare poster of Holly Woodlawn, Andy Warhol's movie star, for a benefit performance for the drug rehabilitation center Phoenix House. We added to our collection of World War I posters with calls for home nursing, conservation of medical resources on the home front, collection and distribution of library books for soldiers, and aid for refugees. The CWML also acquired posters on physicians' advocacy for peace and calls for collection of medical supplies for distribution in areas of conflict.

### HUMANITIES IN MEDICINE COLLECTION

The CWML partnered with the Program for Humanities in Medicine to create the Humanities in Medicine Collection. This collection focuses on works of fiction, nonfiction, and poetry relating



Posters from a print media campaign designed for Vertex Pharmaceuticals by the Martin Agency Richmond and released in December 1999

to the human condition and human experience. Ninety items were added to the collection with the help of CWML staff member Alyssa Grimshaw. The most popular item by far is *When Breath Becomes Air*, by Paul Kalanithi, a 2007 graduate of the Yale School of Medicine. Dr. Kalanithi died of lung cancer in March 2015 at the age of thirty-seven. The book is a reflection on his experiences and a meditation on the meaning of life.

## Library as Place

### COOL STRESS RELIEVERS

#### Study Breaks

Health professionals in training lead busy and stressful lives. Mental breaks are essential, and the CWML is here to meet that need. Fifty board games added to our collection include classics like Chess, Operation, and Monopoly; and newer favorites like The Settlers of Catan, Ticket to Ride, and Carcassonne. Students express appreciation for this new collection and often request that their favorites be added.

This service is an excellent addition to the other nontraditional stress relievers offered by the CWML: jigsaw puzzles are available throughout the library; coloring pages created from illustrations in the Historical Collection have been a hit; and Finn, the CWML therapy dog, visits most Fridays.

#### Mindfulness

Introduced in 2015, Mindfulness on the Medical Campus provides weekly student-led meditation and mindfulness sessions. Supported by Rahil Rojiani, YSM '18; Melissa Funaro, Evening/



Weekend Reference Librarian; and Tracy George, Health Educator for Student Wellness, the program is open to the entire Yale community.

Rahil also received a Student Wellness Grant, which sponsored a lecture by Judson Brewer, M.D., Ph.D., Director of Research at the Center for Mindfulness at UMass Worcester Medical School. This successful event attracted 120 people from Yale and the New Haven community. The grant also provided funding to create a wellness room in the CWML. Rahil and Melissa collaborated with Kayla Ringelheim, SOM/YSPH '18, and the Rev. Candice Provey, Associate University Chaplain, to create a nondenominational space where individuals can meditate, quietly reflect, or practice yoga.

## SECOND YEAR SHOW

Over the years, the CWML has had the pleasure of supporting the Yale School of Medicine's Annual Second Year Shows in a variety of ways. Students used the CWML audiovisual equipment, including video cameras, lights, green screen, and audio recording equipment. They also used the professional video editing software to produce many of the shows' videos. Library staff offered both technical and psychological support for the film crews and for those recording the actual performance.



Students filmed in almost every corner of the CWML.

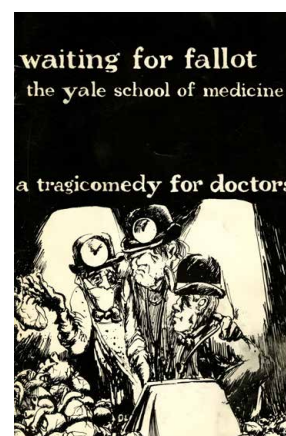
The Historical Library collects programs and recordings of Second Year Shows, adding to a collection that includes materials from as far back as the 1970s. Historical Library staff have provided reproductions of the programs and shows for the Second Year Show producers in the past few years, as the students enjoy incorporating material from past shows into the newest production.

As part of an initiative to preserve audiovisual material in obsolete formats, including the Second Year Shows, staff identified recordings on half-inch reel and VHS for digitization. They will be preserved through a collaboration with Yale University Library Preservation. We are looking forward to the inaugural Fourth Year Show in 2018.

## CUSHING CENTER AT FIVE YEARS

The Cushing Center marked its fifth anniversary in 2015. Since its inception, visitors from sixty-seven countries have signed our guest book letting us know "they were here," and were moved by the experience. The lure of "Cushing's brains" might be what first intrigues visitors, but quickly they discover Harvey Cushing as a pioneering surgeon, scientist, artist, writer, and rare book collector. A small sampling of more than 10,000 patient photos, still being digitized, infuses an interpersonal connection and reminds visitors of the importance of the collaboration between Cushing and his patients.

Last year alone, Terry Dagradi, Coordinator for the Cushing Center, introduced more than two thousand visitors and two hundred



Program cover for the 1978 Second Year Show

Top left: Medical students playing Settlers of Catan  
Photo: John Gallagher

Bottom left: Judson Brewer speaks to a standing-room-only audience about the importance of mindfulness  
Photo: Terry Dagradi

Left: High school students from the Yale Young Global Scholars program exploring the Cushing Center  
Photo: Terry Dagradi



Cynthia Tsay, YSM '18, and Dr. Dennis Spencer use brains from the Cushing Center collection in their research  
Photo: Terry Dagradi

tour groups to the CWML and to the center. A treasure hunt created for school field trips encourages students to open the twenty-two discovery drawers, examine the beautifully curated exhibits of Cushing's rare books, and learn from the artifacts and photos of Cushing's personal and professional life. The Cushing collection inspires students like ninth grader Theresa Barden, who placed first in the National History Day Rhode Island Senior Exhibits Individual division with her project on Dr. Cushing. Closer to home, special Yale programs such as Yale Interdisciplinary Center for Bioethics, Pathways to Science—Brain Education Day, and Yale Center for Analytical Sciences value the center as a resource to incorporate into their programming.

The brain specimens still have research value today. Cynthia Tsay, YSM '18, is collaborating with Maya Lodish '03 M.D., M.H.Sc., Program Director for the Pediatric Endocrinology Fellowship at the NICHD, on an NIH research project involving these specimens. Cynthia is now finalizing a paper, "PRKAR1A mutation in a historical case of Carney Complex from the Harvey Cushing Tumor Registry." It's thrilling to realize there is still much to learn from the work of Cushing and his brave patients.

## Exhibits

**SEPTEMBER 17, 2015–JANUARY 15, 2016**

*Historical Illustrations of Skin Disease: Selections from the "New Sydenham Society Atlas" 1860–1884*

**OCTOBER 17, 2015–JANUARY 15, 2016**

*Discover the Beauty of Science*

**JANUARY 21–APRIL 1, 2016**

*"Contra Cocaine" and Other Works by Robbie Conal, Guerrilla Artist*

*Deaf: Cultures and Communication, 1600 to the Present*  
*Selections from the Medical Instruments Collection*

**APRIL 6–AUGUST 29, 2016**

*The Founding Collection of Prints and Drawings: Bequest of Clements C. Fry*

*The Life of the Medical Library*

*The Medical Library at 75*

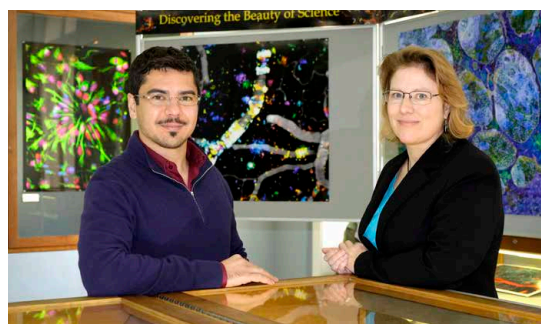
### HIGHLIGHTS

#### *Discover the Beauty of Science*

In the summer of 2015, we invited Yale biomedical researchers, from undergrads to full professors, to share stunning images from their scientific work. Submissions were reviewed by a committee that included New Haven sculptor Gar Waterman, Sarah Fritchey (Curator/Gallery Director at Artspace New Haven), and Dr. Derek K. Toomre, Associate Professor of Cell Biology and Director of the Yale "CINEMA" Laboratory. The best images were exhibited in the CWML foyer. More than four hundred members of the community selected the Viewer's Choice. Some of these images now decorate the 24/7 Computer and Study Space in the CWML.

#### *Historical Illustrations of Skin Disease*

Curated by Jean Bolognia, M.D., Professor and Vice Chair of Clinical Affairs; Irwin Braverman,



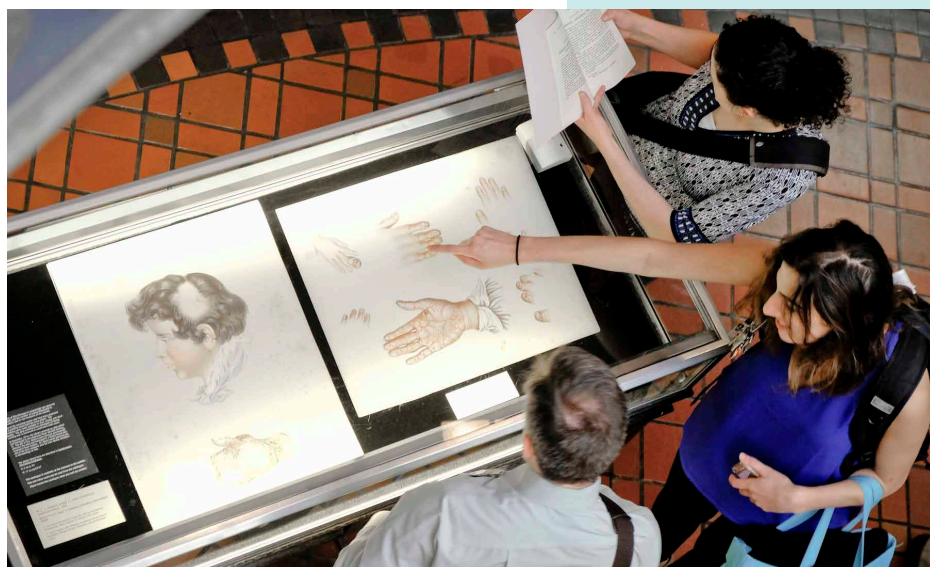
Two winners of the *Beauty of Science* contest, Marco Onorati and Kate Henderson  
Photo: Terry Dagradi



M.D., Professor Emeritus of Dermatology; and Susan Wheeler, Curator of Prints and Drawings, the exhibit *Historical Illustrations of Skin Disease: Selections from the "New Sydenham Society Atlas" 1860–1884* presented the celebrated nineteenth-century life-size color prints to today's clinical audience. Case histories of the individual patients were available by way of the descriptive catalog that accompanied the atlas. Labels described details of the images' production, distribution, and reception by the profession. During the three months that the exhibit was on view, members of the Department of Dermatology incorporated it in many of their teaching activities. Groups of residents, medical students, and faculty gathered at the exhibit for clinical discussion of now rare diseases illustrated from life.

### Deaf: Cultures and Communication

*Deaf: Cultures and Communication, 1600 to the Present*, curated by History of Medicine graduate students Katherrine Healey and Caroline Liefers, brought in new audiences, including members of the deaf community inside and outside of Yale. Katherrine and Caroline gave two well-attended exhibition tours, screened *Children of a Lesser God*, and hosted Laura Mauldin for a talk on her book *Made to Hear: Cochlear Implants and Raising Deaf Children*. Inspired by the popularity of the exhibit, Katherrine and Caroline created an online version.



Top: Visitors to the exhibit *Historical Illustrations of Skin Disease*; Bottom: Irwin Braverman teaching in the exhibit

Photos: Terry Dagradi

## Major Gifts

Through a generous gift from an anonymous donor, the Historical Library created the Yale Archives of Plastic Surgery. The gift supports a temporary archivist position to process the initial collections from Yale-educated plastic surgeons who are leaders and innovators in the profession. Martha Horan, the part-time archivist, began surveying materials at the beginning of April.

The Yale Archives of Plastic Surgery will form a corpus of material that presents a historic perspective of late-twentieth-century plastic surgery. Without this access to informative narratives, detailed drawings, and historic photographs, future scholars would have lacked the primary

sources necessary to understand the work of this generation of plastic surgeons. This archive will include correspondence, patient records, photographs, drawings, office records including billing material, and more.

The Historical Library also received a major gift of visual materials depicting medical practice, public health, disease, and more from the collection of Bert Hansen, Ph.D. The Hansen gift contains more than six hundred prints, including chromolithographs and wood engravings from such nineteenth-century magazines as *Harper's Weekly*, *Frank Leslie's*, *Puck*, and *Judge*. Hansen also donated twentieth-century popular magazines

### Did you know?

CWML now opens at 7:30 a.m. so students can swing by before their 8 a.m. class.

**258,258**

visitors to the physical CWML

**1,074,028**

visitors to the CWML homepage

**11,115**

hours reserved in CWML study rooms

**283,047**

scans, photocopies, and pages printed on our public multifunction machines



Top left: Martha Horan with items from the Yale Archives of Plastic Surgery

Left and top right: Students view medically themed magazines and comic books from the Hansen gift

Photos: Kelly Perry

such as *Life* and *Time*, which reported on medical issues. Other materials include a small collection of manuscripts, with diaries, notebooks, case-books, and scrapbooks by medical practitioners or on medical themes, and a set of medically themed comic books.

Finally, the Historical Library thanks present and former medical faculty and students for their gifts in the past year, which include the papers and library of Vincent T. Andriole, M.D., a bacterial and fungal infection expert who was associated with the Yale School of Medicine for nearly sixty years until his death in April 2015; 117 books and five drawings from Michael Kashgarian, M.D., Professor Emeritus of and Senior Research Scientist in Pathology; and archives depicting the history of the Department of Cell Biology, donated by Thomas Lentz, M.D., Professor Emeritus of Cell Biology. The library also received two highly valued books from the family of Richard Breuer '57 M.D. One was William Beaumont's classic work on digestion, *Experiments and Observations on the Gastric Juice, and the Physiology of Digestion*, with a letter from Beaumont to P.C. Fuller providing the *Experiments* for his review, and Fuller's response, pasted onto endpapers.

## Donors

### GIFTS OF \$250 OR MORE

Michael Adelberg	The Fidelity Charitable	Hugh Moffet
Paul Barash	Gift Fund	John O'Grady
Jack Barchas	Ira Gewolb	Richard Petrelli
Jeremiah Barondess	Glenn Gorlitsky	Seth Powsner
Robert Bazemore	Richard Kahler	Robert Rosa
Irwin Braverman	Michael Kashgarian	Seth Rosenthal
Michael Carey	Donald Kent	Mary Schley
David Carlson	Betty Klein	Jason Schwalb
James Chang	Richard Leff	Frederick Sherman
Catherine Chiles	Lewis Lipsey	Stanley Simbonis
The Charles A. Coffin	Cynthia Lord	Robert Sirota
Memorial Fund	Robert Lyons	Gilbert Solitare
Frederick Cohn	Robert Marcus	Shepard Stone
Kevin Daly	Richard Miller	Lee Strohl
Jodi Dashe	Robert Modlin	Jane Young

### BECOME A FRIEND OF THE CUSHING/ WHITNEY MEDICAL LIBRARY

Through the generosity and support of our Associates, the CWML provides essential support for biomedical education, research, and patient care. We encourage you to consider supporting this invaluable and comprehensive resource by becoming a member of the Medical Library Associates. To make a gift or to find out more about becoming a Medical Library Associate, please visit <http://library.medicine.yale.edu/associates> or contact Katie Hart at [katherine.hart@yale.edu](mailto:katherine.hart@yale.edu) or 203-785-5352. All gifts are tax-deductible.



## Staff Highlights

### LONGTIME SERVICE

#### AWARDS

##### 50 years

Jeannette Ponzio

##### 30 years

Vermetha Polite

##### 25 years

Alexandra Mashkautsan

##### 20 years

Holly Grossetta Nardini

##### 10 years

Melissa Funaro

Mary Hughes

##### 5 years

Khadija El-Hazimy

Melanie Norton

### PUBLICATIONS

Appel TA. "A woman can practice medicine: Connecticut women physicians, 1865–1920." *Connecticut History Review*. 2016. 55(1): 3–33.

Appel TA. "The Cushing/Whitney Medical Library celebrates its 75th anniversary." *Nota Bene: News from the Yale Library*. 2016. 31(1): 1–2.

García-Milian R. "Expert searching: biomart: A 'one-stop shop' data-mining tool." *Medical Library Association News*. 2016. 56(2): 10–11.

Grafe M. "Finding 19th and early 20th century materials online." *Medical Library Association News*. 2015. 55(6): 1.

Grafe M. "Gift supports the new Yale Archives of Plastic Surgery." *Nota Bene: News from the Yale Library*. 2016. 31(1): 4.

Grossetta Nardini H and Wang L. "The Yale MeSH analyzer: a new tool for search refinement." *MLA News*. 2016. 56(6): 6–7.

Grossetta Nardini H and Wang L. "The Yale MeSH analyzer: a tool to streamline biomedical literature searching." *Nota Bene: News from the Yale Library*. 2016. 31(1): 4–5.

Gruenbaum SE, Zlotnik A, Gruenbaum BF, Hersey D, and Bilotta F. "Pharmacologic neuroprotection for functional outcomes after traumatic brain injury: a systematic review of the clinical literature." *CNS Drugs*. 2016. June [Epub ahead of print].

Herring P, Spak JM, Blanco M, and Love N (Eds.). "Annotated bibliography of journals for educational scholarship." *AAMC-Regional Groups on Educational Affairs: Medical Education Scholarship, Research and Evaluation (MESRE) Section*. 2016. Revised March 2016.

Le Grand Rogers R, Narvaez Y, Venkatesh AK, Fleischman W, Hall MK, Taylor RA, Hersey D, Sette L, and Melnick ER. "Improving emergency physician performance using audit and feedback: a systematic review." *American Journal of Emergency Medicine*. 2015. 33(10): 1505–1514.

Malhotra A, Wu X, Kalra VB, Grossetta Nardini H, Liu R, Abbed KM, and Forman HP. "Utility of MRI for cervical spine clearance after blunt traumatic injury: a meta-analysis." *European Radiology*. In press [Epub 22 June 2016].

Neubauer PD, Hersey D, and Leder SB. "Pharyngeal residue severity rating scales based on fiberoptic endoscopic evaluation of swallowing: a systematic review." *Dysphagia*. 2016. 31(3): 352–359.

Norton HF, Tennant MR, Botero C, and García-Milian R. "Assessment of and response to data needs of clinical and translational science researchers and beyond." *Journal of eScience Librarianship*. 2016. 5(1).

Rupp N. Review of *Medlantis*. *Journal of the Medical Library Association*. 2015. 103(4): 240–242.

Rupp N and Norton M. "Cool things we are doing in our library: games at the Yale medical library." *MLA News*. 2015. 55(8): 14.

Schaub JA, Coca SG, Moledina DG, Gentry M, Testani JM, and Parikh CR. "Amino-terminal pro-B-type natriuretic peptide for diagnosis and prognosis in patients with renal dysfunction: a systematic review and meta-analysis." *JACC: Heart Failure*. 2015. 3(12): 977–989.



Jeannette Ponzio began at the CWML in 1965 and has worked for every one of its directors. We are so grateful for your contributions, Jeannette. Thank you!

Photo: Terry Dagradi

Silvestri MT, Bongiovanni TR, Glover JG, and Gross CP. "Impact of price display on provider ordering: a systematic review." *Journal of Hospital Medicine*. 2016. 11(1): 65–76.

Spak JM and Wang L. "Medical librarians support new medical school curriculum." *Nota Bene: News from the Yale Library*. 2016. 31(1): 4.

Wheeler S. "Yale medical students learn from historical illustrations of skin disease." *Nota Bene: News from the Yale Library*. 2016. 31(1): 3.

Zanin TZ, Hersey D, Cone DC, and Agrawal P. "Tapping into a vital resource: understanding the motivators and barriers to blood donation in sub-Saharan Africa." *African Journal of Emergency Medicine*. 2016. 6(2): 70–79.

### PRESENTATIONS

Batten J, Bagley P, Harnke B, Jones J, Mason J, Myatt A, Schardt C, and Traditi L. "Supporting Clinical Care: an institute in evidence-based clinical care for medical librarians: 3-day intensive workshop." 2016. Denver, Colo.

Batten J, Damarell R, Lasserre K, Lewis S, Russell F, and Schardt C. "Australian Evidence-based Practice Librarians' Institute: 6-day intensive workshop." 2015. Melbourne, Australia.

Batten J and Myatt A. "Supporting systematic reviews: the basics, CE Course." North Atlantic Health Sciences Libraries Conference. 2015. Providence, R.I.; Medical Library Association Annual Meeting and Exhibition. 2016. Toronto, Canada.

Bologna J, Braverman I, and Wheeler S. "Historical illustrations of skin disease: selections from the *New Sydenham Society Atlas 1860–1884*." Beaumont Medical Club. 2016. New Haven, Conn.

Canaan A, Arjona C, Seay M, and García-Milian R. "How does FAT10 silencing extend lifespan in mice?" Nathan Shock Center Summit: Personalized Geroscience. 2016. Seattle, Wash.

Dollar D, Heister C, Parker K, and Rupp N. "Research4Life: impacting the developing world." Standing Committee on Professional Awareness Forum. 2015. New Haven, Conn.

García-Milian R, Glover JG, and Gallagher J. "Design, implementation, and evaluation of a medical library program to support biomedical research in the omics era." Medical Library Association Annual Meeting and Exhibition. 2016. Toronto, Canada.

Gentry M. "Library resources for point of care and research." Grand Rounds, Orthopaedics. 2015. New Haven, Conn.

Grafe M, Lethocha P, Medeiros A, and Ilieva P. "Images and texts in medical history: an introduction to methods, tools, and data from the digital humanities." Images and Texts in Medical History Workshop. 2016. Bethesda, Md.

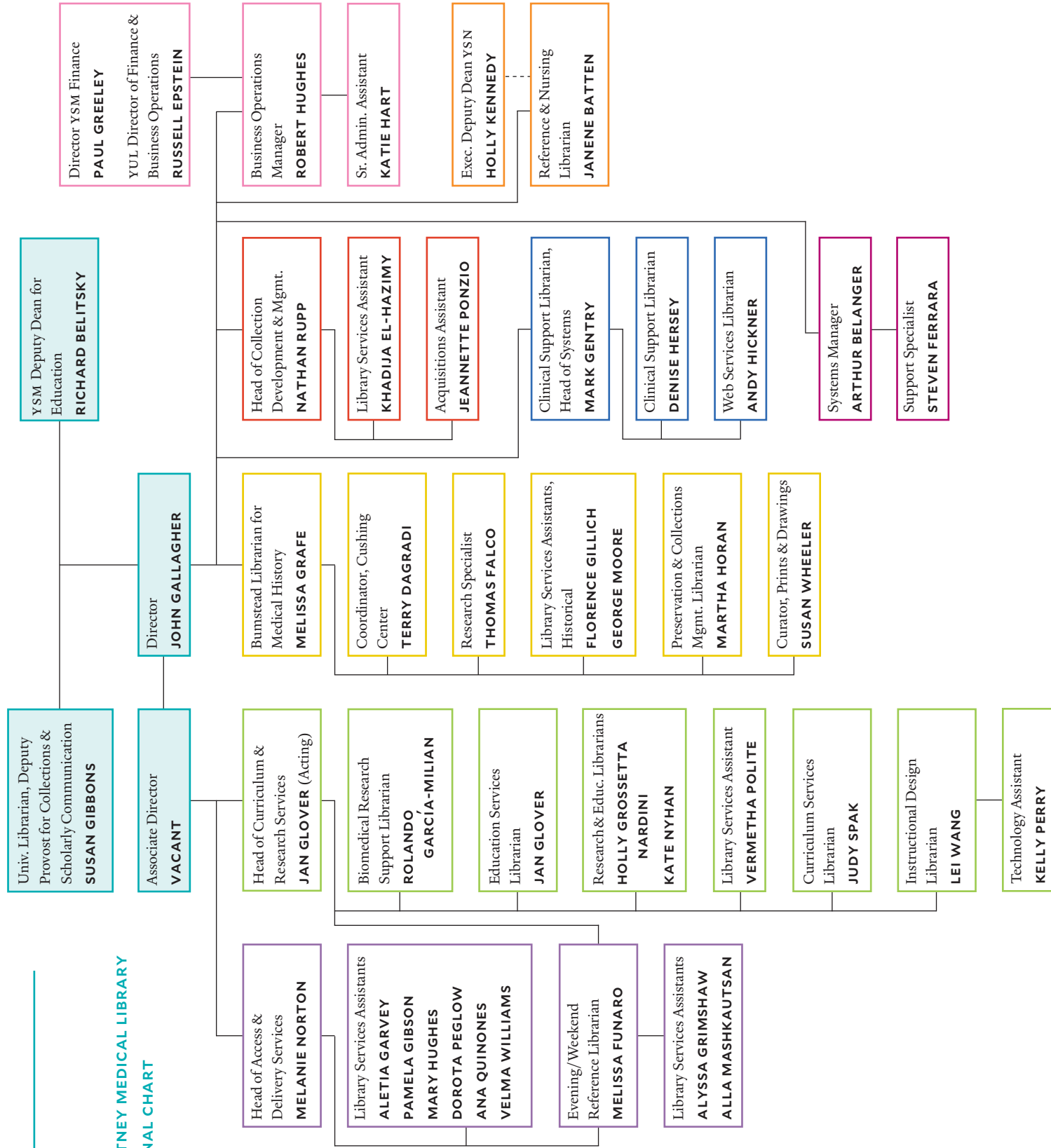
Grafe M. "Medical historical resources in the changing digital landscape." Archivists and Librarians in the History of the Health Sciences Annual Meeting. 2016. Minneapolis, Minn.

- Grafe M. "Medicine at the ground level: the Medical Heritage Library and the ongoing development of historical resources." American Association for the History of Medicine Annual Meeting. 2016. Minneapolis, Minn.
- Grossetta Nardini H and Wang L. "The Yale MeSH analyzer: a new tool for search refinement." North Atlantic Health Sciences Libraries Conference. 2015. Providence, R.I.; Saskatchewan Health Libraries Association Annual Meeting by WebEx. 2016. Saskatoon, Canada; Medical Library Association Annual Meeting and Exhibition. 2016. Toronto, Canada; Yale University Library Standing Committee on Professional Awareness. 2016. New Haven, Conn.
- Grossetta Nardini H, Xu X, Lazar C, and Prah Ruger J. "Micro-costing studies in the health and medical literature: a systematic review." 11th World Congress of the International Health Economics Association. 2015. Milan, Italy.
- Hersey D. "Formulating and constructing a systematic search methodology to identify evidence gaps for further research." Aerospace Medical Association Annual Meeting. 2016. Atlantic City, N.J.
- Hersey D. "Understanding the research practices of humanities doctoral students at Yale University." OCLC Research Library Partnership Meeting: The Library in the Life of the User. 2015. Chicago, Ill.
- Hersey D, Batten J, Gentry M, Grossetta Nardini H, and Rupp N. "Putting the pieces together: finding a point-of-care solution for an academic medical center." Medical Library Association Annual Meeting and Exhibition. 2016. Toronto, Ontario, Canada.
- Hersey D, Lichter L, et al. "Learning and use of social media: a study of ASA members." Poster presentation, American Society of Anesthesiologists Annual Meeting. 2015. San Diego, Calif.
- Hickner A. "Using Omeka for online exhibits." Lightning talk, Medical Library Association Annual Meeting and Exhibition. 2016. Toronto, Canada.
- Hughes M, Norton M, Funaro M, Hart K, and Hersey D. "Harry Potter's world: renaissance science, magic, and medicine." Poster presentation, North Atlantic Health Sciences Libraries Conference. 2015. Providence, R.I.
- Hudson M, Bohemier K, García-Milán R, and Kirkpatrick T. "Research data services at Yale University." Poster presentation, University of Massachusetts and New England Area Librarian e-Science Symposium. 2016. Worcester, Mass.
- Kearney A and Horan M. "Studying current trends in preservation education and employment." American Library Association Annual Conference. 2016. Orlando, Fla.
- Norton M and Funaro M. "How a medical library is an anchor for stress relief and relaxation." North Atlantic Health Sciences Libraries Conference. 2015. Providence, R.I.
- Pilette R, Horan M, Ranger J, and Chandler R. "Audio visual materials in special collections: results of the audio visual collection inventory of unique collections in the library, phase I." Special Collections Steering Committee Forum. 2015. New Haven, Conn.
- Spak JM, Garino A, Gonzalez-Colaso R, Windish D, and Ordway M. "Ideas and innovations: highlights of the 2015 education literature." Medical Education Day at Yale. 2015. New Haven, Conn.
- ## IN THE CURRICULUM
- Batten J. Faculty. "Evidence-based practice." NURS 958: Evidence. Fall 2015. Yale School of Nursing.
- Batten J. Faculty. "Finding evidence: the beginnings." Graduate Entry Prespecialty in Nursing Program. October 2015. Yale School of Nursing.
- Batten J. Guest lecturer. "Finding evidence." Ph.D. Program. November 2015. Yale School of Nursing.
- Batten J. Faculty. "Evidence-based practice presentation." Nurse Residency Program. Fall 2015, Spring 2016. Yale New Haven Hospital.
- Batten J. Faculty. "Evidence-based practice – the basics." Center for Professional Excellence. Fall 2015, January 2016, April 2016. Yale New Haven Hospital.
- Hersey D. Guest lecturer. "Using medical library tools." Anesthesiology Resident Didactic Session. August 2015. Yale New Haven Hospital.
- Hersey D. Guest lecturer. "Support and resources available at the library." Surgery, Critical Care Fellows, and Acute Care Surgical Fellows. November 2015. Yale New Haven Hospital.
- Gentry M. Guest lecturer. "Online searching." Nurse Residents. April 2016. Yale New Haven Hospital.
- Gentry M. Guest lecturer. "Evidence-based practice." Nurse Residents. September 2015, October 2015, and November 2015. Yale New Haven Hospital, Saint Raphael Campus.
- Glover JG and Spak JM. Faculty. "Evidence-based medicine." Medical Approach to the Patient Clerkship, Internal Medicine Boot Camp. September 2015, January 2016, March 2016, and June 2016. Yale School of Medicine.
- Glover JG and Spak JM. Faculty. "Evidence-based psychiatry." Primary Care and Mental Health Clerkship (in-patient psychiatry) Precede. July 2015, August 2015, September 2015, October 2015, November 2015, January 2016, February 2016 (2), March 2016, April 2016, May 2016, and June 2016. Yale School of Medicine.
- Glover JG and Spak JM. Guest lecturers. "Research I: searching the medical literature." September 2015. Yale Physician Associate Program.
- Glover JG and Spak JM. Guest lecturers. "Research II." March 2016. Yale Physician Associate Program.
- Grafe M and Wheeler S. Collection experts. "The psychology of persuasion as exemplified in cigarette advertising and anti-smoking and other public health posters." HSHM 216: Minds and Brains in America. September 2015. Yale College.
- Grafe M and Wheeler S. Collection experts. "Lam Qua's portraits of Peter Parker's patients." HSHM 455: History of the Body: Science, Medicine, and the Arts. October 2015. Yale College.
- Grafe M and Wheeler S. Collection experts. "Works by Vesalius, Berengario, Estienne, Hunter, and other selections from the Historical Collections." HSHM 223: Doctors and Patients in Western Medicine. February 2016. Yale College.
- Grossetta Nardini H. Guest lecturer. "Systematic reviews, meta-analyses, and comprehensive searching." CDE 505: Social and Behavioral Foundations of Health. July 2015. Yale School of Public Health.
- Nyhan K. Guest lecturer. "EndNote: a productivity tool." EPH 600: Research Ethics and Responsibility. April 2016. Yale School of Public Health.
- Nyhan K. Guest lecturer. "Managing information in EndNote." EPH 542: Practice-Based Community Health Research. March 2016. Yale School of Public Health.
- Nyhan K and Rupp N. "Open access and data management." Postdoctoral Seminar. April 2016. Yale School of Nursing.
- Spak JM. Guest lecturer. "Effectively searching the medical education literature." Medical Education Fellowship. September 2015. Teaching and Learning Center, Yale School of Medicine.
- Wheeler S. Collection expert. "Vesalius's *Fabrica*, *Epitome*, and other selections from the Historical Collections." ART 006: Art of the Printed Word. October 2015. Yale College.



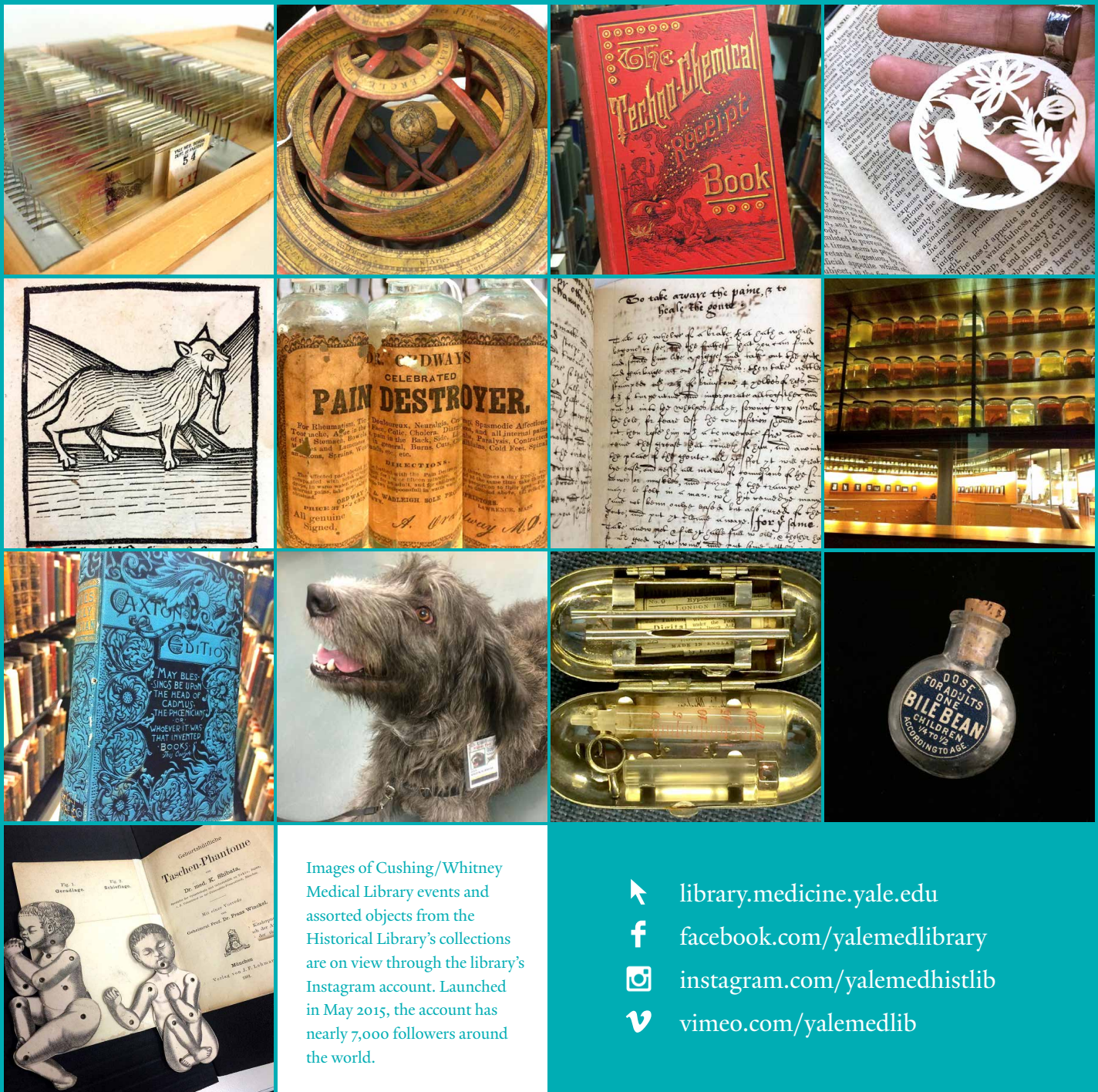
# Staff

## CUSHING/WHITNEY MEDICAL LIBRARY ORGANIZATIONAL CHART 2015-2016



# Yale Harvey Cushing / John Hay Whitney Medical Library

333 Cedar Street, PO Box 208014, New Haven, Connecticut 06520-8014



Images of Cushing/Whitney Medical Library events and assorted objects from the Historical Library's collections are on view through the library's Instagram account. Launched in May 2015, the account has nearly 7,000 followers around the world.

[library.medicine.yale.edu](https://library.medicine.yale.edu)  
[facebook.com/yalemedlibrary](https://facebook.com/yalemedlibrary)  
[instagram.com/yalemedhistlib](https://instagram.com/yalemedhistlib)  
[vimeo.com/yalemedlib](https://vimeo.com/yalemedlib)