

Harvey Cushing / John Hay Whitney
Medical Library, Yale University

Annual Report, 2021–2022



Contents

- 2 From the Director
- 3 Clinical Support
- 4 Research Support
- 7 Education Support
- 10 Community Support
- 12 Exhibitions
- 13 Library Supporters and Friends
- 17 Staff Highlights
- 23 Staff

Publication Note

The Harvey Cushing/
John Hay Whitney Medical
Library Annual Report is a
collaborative effort.

Annual Report Editors

Dana Haugh, Lead
Melissa Funaro
Megan Nance
Kelly Perry
Judy Spak

Contributors

Alexandria Brackett,
Courtney Brombosz,
Kayla Del Biondo, Sofia
Fertuzinhos, Melissa
Funaro, John Gallagher,
Rolando Garcia-Milian,
Melissa Grafe, Alyssa
Grimshaw, Holly Grossetta
Nardini, Caitlin Meyer,
Megan Nance, Melanie
Norton, Kate Nyhan,
Zsuzsanna Nemeth, Judy
Spak, Kaitlin Throgmorton,
Lei Wang

Photography

Terry Dagradi, Holly
Grossetta Nardini, Melissa
Grafe, Dana Haugh, Robert
Lisak, Melanie Norton,
Kelly Perry

Publication Design

Dana Haugh

Cover: Four researchers
examine a manuscript from
the Historical Library's
collection.

Photo: Terry Dagradi

From the Director

Academic libraries, particularly those that support science and medicine, are immersed in an evolutionary and exciting time. On the horizon, national policies related to the management and sharing of research information and data will have a profound and potentially transformational effect on the scholarly information sharing ecosystem.

Pioneering mandates in several European countries have resulted in immediate access to publications stemming from publicly and privately funded research. In the U.S., the new National Institutes of Health Data Management and Sharing mandate, in addition to the White House Office of Science and Technology Policy memorandum that ensures free, immediate, and equitable access to federally funded research, both signal significant change for research dissemination practices in the coming years.

Locally, the Medical Center has grown tremendously. Yale School of Medicine and the Yale New Haven Health System's shared vision of an academic health system presents exciting opportunities for the Medical Library. We're continually working to simplify and standardize access to the research and evidence clinicians need to provide the highest standard of patient care.

Demand for the Medical Library's research, data, and bioinformatics services is flourishing as well. During the past year alone medical librarians co-authored with research teams on a remarkable seventy-three systematic review and evidence synthesis papers, a forty-nine percent increase over the previous year.

New education programs such as the School of Public Health's Online Executive Master of Public Health and the School of Nursing's Psychiatric Mental Health Nurse Practitioner programs present an opportunity for the Medical Library to devise new services and support targeted towards distance learners.



John Gallagher
Photo: Terry Dagradi

It is an exciting and dynamic time for libraries indeed! As we navigate the future, all of us at the Cushing/Whitney Medical Library are eager to partner with you and support teaching, learning, research, and patient care across the Medical Center and beyond.

Sincerely,
John Gallagher

Clinical Support

NEW 'ASK A LIBRARIAN' LINK IN EPIC

Clinical librarians from the Yale New Haven Health System (YNHHS) libraries* collaborated to add an 'Ask a Librarian' link in Epic, under the 'Library Resources' tab. Launched in June 2022, the link provides another way to connect healthcare providers to their hospital's clinical librarian. Whether it is assistance with a literature search or an inquiry about library resources, requesting library support at the point of need is now quicker and easier. Clinicians throughout YNHHS have already started placing requests.

*Comprising Reeves Health Sciences Library, Greenwich Hospital Medical Library, Lawrence & Memorial Hospital Library, Westerly Hospital Library, and the Cushing/Whitney Medical Library

CARE SIGNATURE PATHWAYS

Care Signature pathways at Yale New Haven Hospital (YNHH) bring evidence, expert consensus, and clinical resources to clinicians at the point of care, promoting health equity across all sites of care. The Medical Library's clinical librarians support this work by providing extensive literature reviews for the multi-disciplinary Clinical Consensus Group that builds each condition-focused pathway. These literature reviews are critical for delineating best practices and identifying areas with known controversies, variations,

"The medical librarians have been instrumental in ensuring we apply the highest academic rigor to our Care Signature pathways. Their partnership has elevated our work!"

– Nancy Kim M.D., Ph.D., Senior Medical Director, Care Signature, Yale New Haven Health System



Clinical Research & Education team members (L to R): Zsuzsanna Nemeth, Alexandria Brackett, Janene Batten, Melissa Funaro, Alyssa Grimshaw

Photo: Terry Dagradi

and care inequities.

This partnership highlights the valuable contributions and expertise clinical librarians bring to interprofessional teams working to improve the safety and quality of patient care.

LITERATURE SEARCHING PORTAL

The Medical Library unveiled a new 'Evidence Synthesis & Literature Reviews' web portal. The portal enables researchers to learn about the Medical Library's search services and educate themselves on evidence synthesis reviews via self-guided learning modules. On the 'Specialized Help' page, users learn how medical librarians can provide support for general and comprehensive searching as consultants or embedded members of the research team.

The site also highlights the wraparound library support for research, including article retrieval by the Medical Library's Cross-Departmental Team. Researchers can also find tutorials, guidelines and protocols, and learn about the multiple steps needed to complete a review.

Research Support

DATA MANAGEMENT

Last November, we welcomed Data Librarian for Health Sciences Kaitlin Throgmorton. Since her appointment, Kaitlin has offered several research data management seminars customized for Yale School of Medicine (YSM) programs and departments, such as the National Clinician Scholars Program, the Yale Interdisciplinary Prostate Program, and the Blumenfeld Lab.

In April, Associate Provost for Research Lisa D'Angelo invited Kaitlin to join an advisory group to help plan for the National Institutes of Health's new Data Management and Sharing Policy which will become effective in January 2023. In this role, Kaitlin advises on best practices in data management and sharing, and meets with stakeholders across campus. Additionally, she developed a new course about writing data management plans to educate and support researchers.

BIBLIOMETRICS AND RESEARCH IMPACT

Yale University Library recently purchased an update to the Web of Science XML Dataset, which allows researchers to conduct custom bibliometric analyses. With over 82 million publication records in raw XML format, this large dataset requires significant processing to facilitate user access. Kaitlin Throgmorton, System and Application Specialist Justin DeMayo, and Head of Technology and Innovation Lei Wang conducted environmental scans and wrote custom code to process the dataset. This work allows Yale administrators and researchers to retrieve custom data in a format required for their bibliometric analyses.

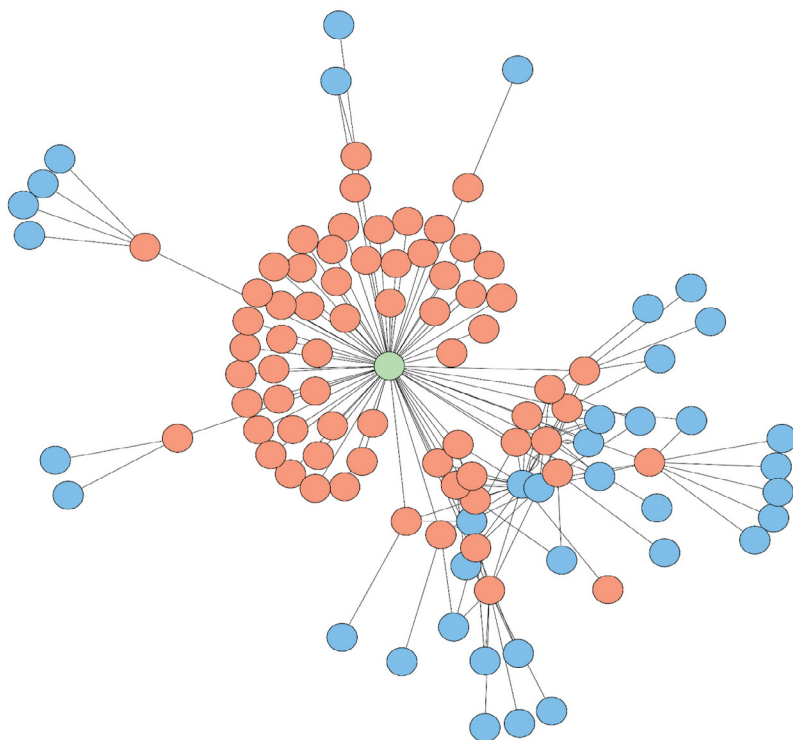
The Medical Library also helped create customized bibliometric reports and visualization graphs. Examples include Kaitlin's 'scholar-in-focus' network graphs, which illustrate research impact for early

career medical professionals.

In addition, the Medical Library provided consultation and training services on impact evaluation and bibliometric analysis. We also partnered with researchers on bibliometric studies such as trends and patterns of publication in urology and radiology. The Medical Library is uniquely positioned to provide these services because we have an expert understanding of the data we license and can help researchers more precisely interpret metrics.

BIOINFORMATICS

Sofia Fertuzinhos joined the Medical Library's Bioinformatics Support Hub in August 2021 as our second Research and Education Librarian for Bioinformatics. In this role, Sofia serves as a liaison to basic and clinical research departments and programs, and develops new Medical Library training opportunities, such as "Analysis of differential gene expression of bulk RNA-seq data using 'DESeq2' in RStudio". Prior to



This bibliometric 'scholar-in-focus' graph centers the researcher, usually an early career scholar, in the middle of the graph (represented in green). Their accomplishments, such as published articles and other scholarly communications, fan out around them (represented in red). Collaborators on those accomplishments, such as co-authors, cluster at the edges (represented in blue).

joining the Medical Library, Sofia was a researcher and wet-lab scientist at YSM. Her perspective has been valuable in cultivating relationships with biomedical researchers looking to join the world of bioinformatics.

OPEN SCHOLARSHIP

Yale authors often pay expensive article processing charges (APCs) to publish research without barriers to access or paywalls. To support open access (OA) publishing, Yale University Library signed agreements with Cambridge University Press and Portland Press. These “read and publish” agreements waive APCs for Yale University and YNH researchers publishing in fully open access and hybrid (open access and paywalled) journals. These deals make OA publishing opportunities more affordable, equitable, and available.

This spring, Research and Education Librarian for Public Health Kate Nyhan and Simbonis Librarian for Public Health Kayla Del Biondo conceptualized and began a research study exploring Yale School of Public Health (YSPH) faculty authors’ knowledge and viewpoints around open

Yale University Library’s open access publishing support includes APC waivers for over 450 journals including PLOS Biology and the Journal of Laryngology & Otology, as well as APC discounts for publishers such as BioMed Central and SpringerOpen.



access and self-archiving (commonly referred to as “green open access”). Kayla and Associate Director Holly Grossetta Nardini are continuing to investigate author understanding of open access publishing and identifying barriers to self-archiving. This research will inform how librarians at Yale and beyond perform instruction and outreach to empower authors to make educated publishing decisions.

Sofia Fertuzinhos teaches a bioinformatics class in the Medical Library’s instruction classroom
Photo: Holly Grossetta Nardini

GRANTS

Alongside Principal Investigator Karen Wang and other Equity Research and Innovation Center (ERIC) staff, Holly Grossetta Nardini (Co-Investigator) and Research and Education Librarian Caitlin Meyer started work on a \$450,000 three-year grant from the National Library of Medicine. The G08 grant program is for projects that seek to reduce health disparities through information resource projects. This project involves developing methods for locating, synthesizing, and curating publicly available health information on populations that are poorly described in the literature, using cardiovascular disease and people of Puerto Rican descent as the case study. One outcome will be a content analysis about how to locate data on multi-racial

populations.

COLLECTION DEVELOPMENT

When we negotiate contracts with publishers, the Medical Library's highly trained license review team works to protect the interests of our research community and their access to content. A recent example of this is when Collection Development and Scholarly Communication Librarian Lindsay Barnett renegotiated our contract for an evidence-based point-of-care resource. After reviewing the new license terms and conditions, Lindsay made key edits to ensure we retained the right to use the resource's content for interlibrary loan. This right is granted by law, but it is one that the publisher has attempted to systematically strip from contracts. Thankfully our license review team is well-prepared for these long and sometimes challenging negotiations.

We continually assess the publishing environment and stay abreast of new titles and shifting research priorities at Yale.

After two years of financial uncertainty, we've been able to add new resources to our collection such as *Stahl Online*, *Genetics in Medicine*, and *The Lancet Gastroenterology & Hepatology*.

NEW ACQUISITION

The Historical Library expanded its holdings related to disability through the acquisition of the Robert Bogdan International Collection on Disability, Healthcare, and Body Modification. The collection includes photo postcards, photographs, and other ephemera dating from 1890-1969, which document indigenous healthcare practices and missionary work, often from a colonial viewpoint. Robert Bogdan's pioneering work in the field of disability studies focuses on "disability" as a social, cultural, and political phenomenon.

77,534

in-person visits to the Medical Library

280,870

visits to the Medical Library website

7,315

items borrowed by users

7,303

articles sent to users



Red Cross maternity ward in an unnamed African country, from the Robert Bogdan International Collection on Disability, Healthcare, and Body Modification

Education Support

PUBLIC HEALTH EXPANSION

This year we expanded the Medical Library's support for students, faculty, and staff at YSPH. Simbonis Librarian for Public Health Kayla Del Biondo joined the Academic Research and Education team, bringing expertise in information literacy and a passion for student success.

Having two specialized public health librarians has allowed the Medical Library to offer the growing YSPH community additional library services, including an improved public health presence on our website, more frequent office hours, and popular new training sessions, such as "Before You Write the Review: How to Effectively Read and Annotate Scholarly Literature." YSPH's student cohorts and the new Executive Master of Public Health (MPH) program also benefit from Kayla's additional support.

ASSESSING SUCCESS AT YSN

Research and Education Librarian for Nursing Janene Batten conducted a survey of Yale School of Nursing (YSN) faculty to gauge their awareness of library services and satisfaction with their librarian. Janene conceived the project and worked with Yale University Library's Assessment and User Experience Research team to develop survey and interview questions. The resulting report confirmed that faculty were pleased with their librarian interactions and wanted to learn more about library services. Janene used the data to develop a series of orientations about the library for new YSN faculty.

CURRICULAR COLLABORATION

Building on a successful paper at YSM's 2021 Medical Education Day, Research and Education Librarian Caitlin Meyer and Dr. Rosana Gonzalez-Colaso presented their innovative physician associate longitudinal research skills curricula to



a national audience at the 2021 Physician Assistant Education Association meeting. The eighty-minute workshop, the only content in the program presented by a librarian, led participants through curriculum design and implementation as well as how to build interprofessional relationships between faculty and librarians.

Kate Nyhan welcomes MPH students to the Medical Library
Photo: Holly Grossetta Nardini

"I really appreciate the abundant resources from the Yale Medical Library. We have knowledgeable and approachable librarians, various workshops that cover different topics, helpful statistical consultants, etc. All these have assisted my research in numerous ways."

– Xiaoting Shi, Ph.D. '24 (Environmental Health Sciences)



Melissa Grafe shares some of the Historical Library's poster collection with a visiting Yale College class
Photo: Terry Dagradi

TEACHING AND CONSULTATIONS

Throughout the year, medical librarians orient and educate faculty, staff, and trainees across the medical campus about library services and support. These sessions are tailored to each group's unique needs, both in terms of the type of information presented and where or how it is delivered. Sessions range from thirty-minute Zoom overviews to multi-week didactic lessons throughout the medical curriculum. Perhaps most importantly, these sessions establish medical librarians as partners in research, clinical, and educational endeavors, and cultivate relationships that will last throughout each researcher's Yale career.

Our goal is for researchers to develop the knowledge and skills they need to do their work effectively, whether that is searching biomedical databases, studying historical manuscripts, preparing for grants, or managing their research data.

WORKSHOPS AND TRAINING

Medical librarians added a variety of highly requested training to the instruction calendar, including "Getting Started with Python: An Introduction to Programming" and "Managing Citations and Bibliographies with EndNote 20". Also popular this year were the Bioinformatics Support Hub's peer-to-peer teaching series, which features postdoctoral researchers at Yale, and a collaborative omics training with Dr. Mariateresa Mazzetto from the Genetics Department. Additionally, medical librarians partnered with faculty, researchers, librarians from other units, software vendors, and the Poorvu Center for Teaching and Learning to expand educational offerings for the medical campus community.

1,745
 consultations and
 embedded
 instruction sessions

2,627
 faculty, staff, and
 trainees reached

400+
 library workshops
 and training
 sessions offered
 virtually and in-
 person

4,044
 workshop attendees



“This was great. It was a perfect pace for an introduction to Zotero and Courtney was incredibly informative and went above and beyond to help me find answers!”

– Workshop attendee



“Excellent amount of information, and all we needed at an important time when we are about to dive into a research-intensive summer.”

– Summer to Advance Research Training at Yale School of Medicine student



“Kaitlin is an excellent teacher. She has a logical approach towards beginning with Python that is easily digestible and retainable for a beginner. She was very patient and answered all of our questions thoroughly.”

– Workshop attendee



Courtney Brombosz leads a library orientation for new YSM students
Photo: Terry Dagradi

Kaitlin Throgmorton teaches a data management workshop
Photo: Terry Dagradi

Alexandria Brackett highlights research tools for Surgery residents
Photo: Holly Grossetta Nardini

Caitlin Meyer meets with students from the Physician Assistant Online Program
Photo: Dana Haugh

Community Support

MUTUAL AID INITIATIVES

Medical Library staff collaborated with members of the community both within and outside of Yale to help raise supplies, awareness, and funds in support of multiple causes. Library Services Assistant Dorota Peglow served a vital role in connecting the Medical Library with the Franciscan Bridge of Help to collect and deliver desperately needed medical supplies and monetary aid to hospitals in Lviv, Ukraine. A large donation box was placed near the Medical Library's circulation desk in early March 2022 and in just two days, the Yale community had filled three boxes with donated medical and surgical supplies. Two student workers helped translate medication labels into both Ukrainian and Russian and pack boxes.

Additionally, our staff members partnered with IRIS (Integrated Refugee Immigrant Service), a non-profit agency based in New Haven, to gather fifteen boxes of materials in aid of Afghan refugees. Other collaborations included teaming up with Yale's Working Women's Network to collect diapers and wipes for their annual diaper drive; and Head of Access and Delivery Services Melanie Norton's collaboration with the Arts Library's Shawana Snell to obtain \$2,000 for the New Haven Free Public Library to purchase books for underserved populations.

MENTAL HEALTH SUPPORT

In March 2022, a group of Medical Library staff attended an eight-hour training session to be certified as Mental Health First Aiders. Asha Shipman, Director of Hindu Life and Certified Mental Health First Aid Trainer, educated participants to connect those in crisis to appropriate professional, peer, social, and self-help resources. Participants grew together as a team while learning how to support our library patrons in a unique way.



Student workers translate medication labels and pack boxes of medical supplies for Ukraine
Photo: Melanie Norton

Box collecting donations of medical supplies for Ukraine
Photo: Dana Haugh

Dorota Peglow, Sofia Fertuzinhos, and two YSPH students help raise awareness and funds for Ukrainian relief
Photo: Melanie Norton

"I am glad my language skills were able to come in handy here. This war feels deeply personal to me and while it feels like nothing I can do could be enough, I hope that this helps at least some."

– Anna Baker YC '22, Medical Library student worker



Library Services Assistant Vermetha Polite coordinates frontline services at the Information Desk, organizes the Medical Library's education calendar, assists with room reservations, handles and refers a wide range of questions, and provides assistance requesting interlibrary loan material and related inquiries.

Photo: Kelly Perry



Chris Zollo is the Historical Library Assistant. He oversees the Historical Library reading room, runs the Medical Library's Instagram account, and assists with exhibits, preservation, reference, digitization, cataloging, acquisitions, and more.

Photo: Kelly Perry

PRIVACY BOOTH

The Medical Library recently installed a Zenbooth in the Morse Reading Room. This free-standing modular privacy booth offers a soundproof space for visitors to take phone calls, have meetings, or focus on tasks in complete silence. The booth is equipped with an adjustable desk, power outlets, and dimmable lights. Additionally, a high-powered fan cycles fresh air into the booth every minute.



Victoria Helwig and John Gallagher admire the Medical Library's new Zenbooth in the Morse Reading Room

Photo: Kelly Perry

Exhibitions

LAUNCHED AUGUST 2021

Medical Astrology: Science, Art, and Influence in Early-Modern Europe (online)

This exhibition explores the visual history of medical astrology in Europe between the fifteenth and seventeenth centuries. Nearly 200 images from the Historical Library's collection are included.

AUGUST 2021–JANUARY 2022

Environment and Climate Change Posters

FEBRUARY 2022–APRIL 2022

Innovation & Evolution in Hip Replacement Surgery: Highlights from the Keggi–Rubin Hip Implant Collection at Yale University

This exhibition explored the evolution of hip replacement surgery through historic implants selected from the new Keggi–Rubin Hip Implant Collection at Yale University. An online version of this exhibition features additional objects from the collection.

MARCH 2022–MAY 2022

Scenes of City Life

This exhibition featured prints depicting life in the Great Depression and its aftermath, presented in the works of immigrants and others for the Federal Art Project and the Works Progress Administration.

APRIL 2022–AUGUST 2022

100 Years of Pediatrics at Yale

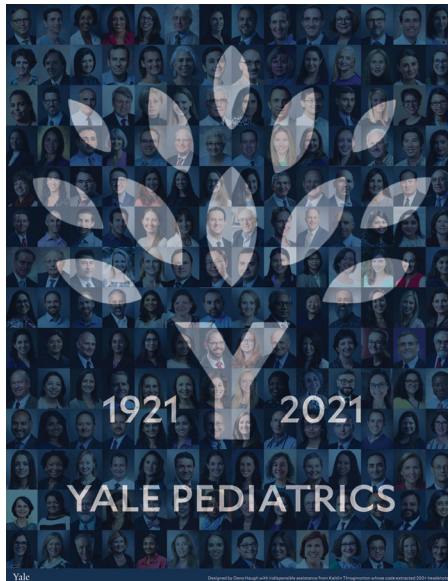
This exhibition featured material documenting some of the department's initiatives, firsts, faculty, residents, fellows, research, and outreach to the community.

MAY 2022–DECEMBER 2022

Highlights from the Yale Child Study Center Reference Collection

JUNE 2022–DECEMBER 2022

Activism through Historical Posters



Melissa Grafe and Chris Zollo assist Dr. Lee Rubin during the installation of the hip replacement exhibition
Photo: Kelly Perry

100 Years of Pediatrics at Yale exhibition poster

A zodiac man in a celestial wheel from the Medical Astrology exhibition

Library Supporters and Friends

DONORS

Gifts of \$250 or more

| | |
|--------------------|---------------------|
| Nancy J. Brown | John P. O'Grady |
| Michael E. Carey | Seth M. Powsner |
| Charles A. Coffin | Robert M. Rosa |
| Memorial Fund | David E. Schwartz |
| Robert B. Diasio | Gilbert B. Solitare |
| Amichai J. Erdfarb | Yung H. Son |
| Paul Gagliardi | Dennis D. Spencer |
| Andrew E. Hoover | Lauren T. Spiliotes |
| John S. Hughes | Aunica Lee Steele |
| Basem M. Jassin | Lee H. Strohl |
| Robert B. Johnson | Albert L. Ungricht |
| Stephen M. Kavic | Karl G. Wagner |
| Patrick R. Maloney | Aron D. Wahrman |
| Robert Marcus | |

MAJOR GIFTS

Riesman Gift

Approximately 230 rare books and manuscripts were gifted to the Historical Library from the libraries of David Riesman, M.D. and John P. Riesman, M.D. The books' content covers a wide variety of topics and time periods, with the earliest texts dating from the sixteenth century. Notable items include the works of highly influential medical authors such as Florence Nightingale, Herman Boerhaave, and Thomas Willis. Other examples include a 1774 copy of William Buchan's *Domestic Medicine* as well as "*Tom Telescope's*" *The Newtonian system of philosophy... for the use of young ladies and gentlemen*, (1803), an introductory text to Newton's scientific principles.

Lyme Disease Activism

The Historical Library received the papers of Lyme disease activist Polly Murray as a gift from her family. Murray lived in Lyme, Conn. and alerted the Connecticut State Department of Health and Yale — particularly doctors Allen Steere and Stephen Malawista — to the outbreak of symptoms in the Lyme community. Murray's firsthand experience with the disease was



integral to the early investigation, and her papers include correspondence, an original handwritten list of those who had been affected and their symptoms, and other materials.

Badges and pins from the papers of Lyme disease activist Polly Murray
Photo: Terry Dagradi

Project Archivist for Burget papers

In November 2021, the Historical Library welcomed Laura Juliano as a Term Project Archivist processing the Gary Burget papers, a 267 linear feet collection of plastic surgery records and materials. With the help of student assistants, by June 2022 Laura completed organizing and rehousing more than half of the collection in archival enclosures to ensure materials are preserved for future use. The position was funded through a \$100,000 gift from Dean E. Burget, M.D., and Gabriella M. Burget, in memory of Dr. Gary Burget (1941–2017).



Laura Juliano
Photo: Robert Lisak

Student Healthcare Activism

The Historical Library expanded its collections with a gift documenting student healthcare activism starting in the 1960s. Michael Charney, M.D. '72, donated his papers related to student activism during his time at Yale, as well as material from

other activist groups, such as the Black Panther Party and The Medical Committee for Human Rights. The Charney Collection provides insight into healthcare activism at Yale and in other parts of the country, highlighting links between the various student, political, and community activist groups.

Beaumont Medical Club Papers

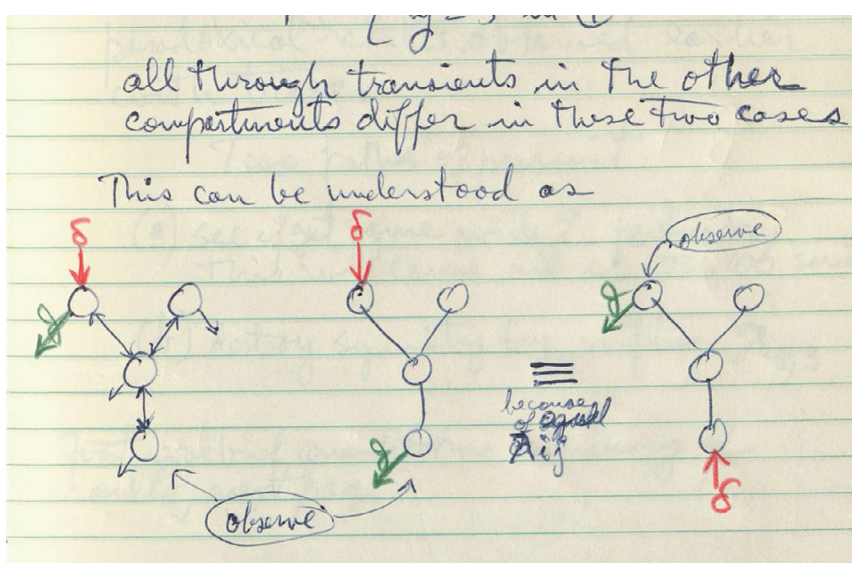
The YSM Beaumont Medical Club formally transferred its papers to the Historical Library, helping to preserve its 100-year legacy and open the collection to researchers. The Beaumont Medical Club was founded in 1920 by a group of YSM physicians and faculty members, who named the club for physician William Beaumont, a Connecticut resident and an early pioneer in physiology. The club was organized to promote the study of the history of medicine and to celebrate the contributions of physicians and medical scientists to the welfare of mankind.

The Wilfrid Rall Computational Neuroscience Research Collection

The Historical Library received the Wilfrid Rall Computational Neuroscience Research Collection, a gift of Gordon Shepherd, M.D., D.Phil. (1933–2022), and the family of Wilfrid Rall, Ph.D. (1922–2018). Dr. Rall was a neuroscientist whose work focused on the electrical properties of neurons and the functions of neuronal dendrites, and helped found the discipline of computational neuroscience. The collection documents his research from 1963–1971, particularly his collaborative work with Dr. Shepherd. Research notebooks, correspondence, and reprints of Dr. Rall's publications are included in the archive. The notebooks were fully digitized and are available online.

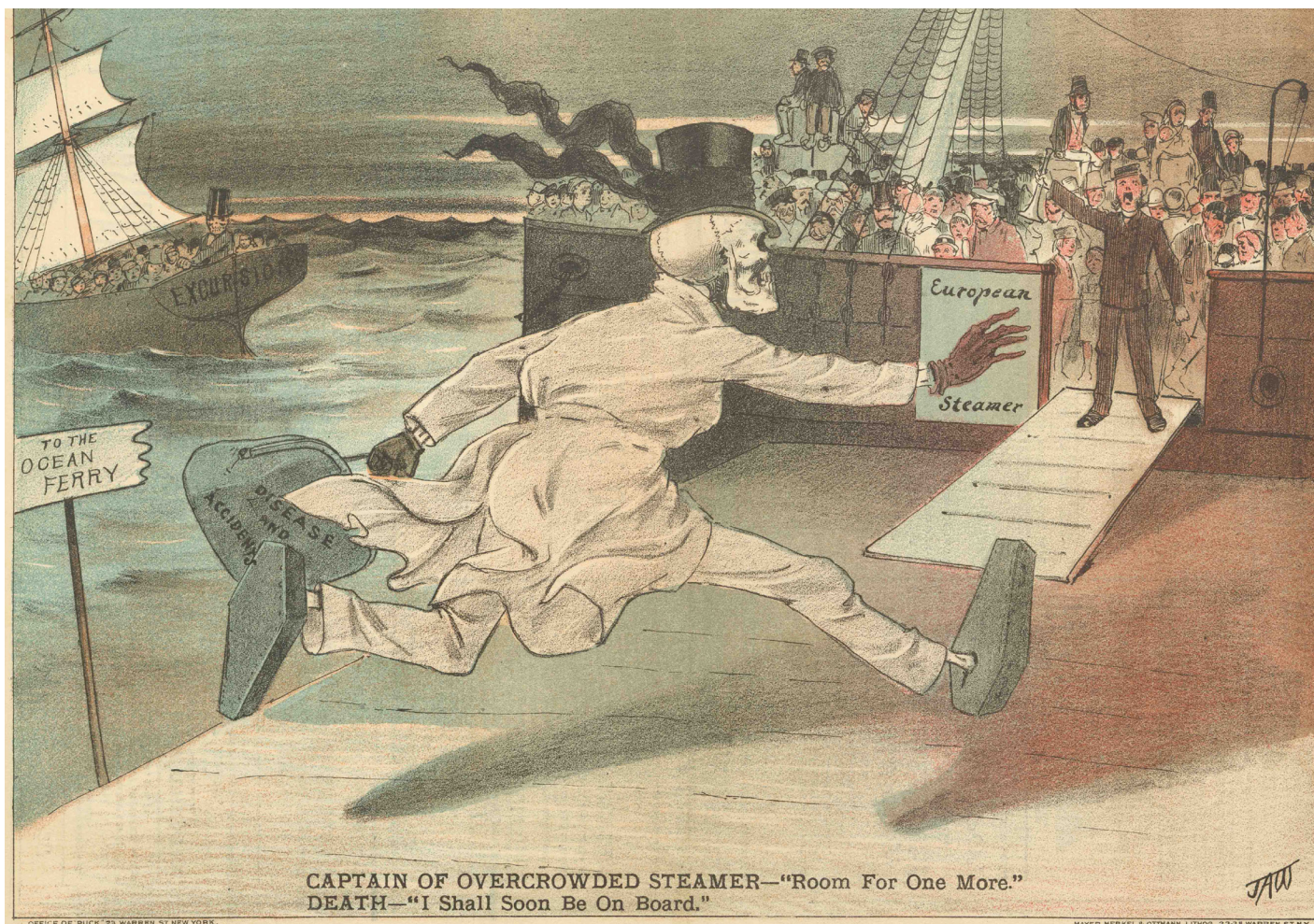
Waltham Hospital Medical Records

The Historical Library received a new gift of patient records from Boston's Waltham Hospital (which closed in 2003) dating from



Dr. Alan Engler and the Waltham Hospital medical records
Photo: Alan Engler

A page from Wilfrid Rall's second notebook, 1963



1889 to 1897. Within seven bound volumes are notes, operative reports, pathology reports, and medication records written by attending physicians. The volumes provide a snapshot of patient care, disease, and medicine in late nineteenth-century Massachusetts. The collection is a generous gift of Alan M. Engler, M.D., YC '76.

Picturing Public Health and Medicine

Like audiences today, nineteenth-century readers of popular magazines and newspapers learned about public health initiatives and medical discoveries through articles and imagery. The Historical Library team digitized over 600 images from The Bert Hansen Collection of Medicine and Public Health in Popular Graphic Art, such as chromolithographs and wood engravings

from nineteenth-century magazines. Notable titles include *Harper's Weekly*, *Frank Leslie's Illustrated Newspaper*, *Puck*, and *Scientific American* on topics including cholera, diphtheria, tuberculosis, vaccinations, rabies, hospitals, unsafe foodstuffs, and public sanitation. The effort to digitize these images and make them freely available worldwide was generously funded by the Arcadia Fund.

Additionally, to celebrate this year's National Public Health week, Kayla Del Biondo and Kate Nyhan invited Bert Hansen, Professor Emeritus of History at Baruch College, to present highlights from his collection. The lecture is available to view here: <https://vimeo.com/702172511> (closed captioning available)

Illustration from the Bert Hansen Collection of Medicine and Public Health in Popular Graphic Art

ADDITIONAL GIFTS

Robert and Jane Willich Brockway
Chisholm Larsson Gallery
Robert G. Dillard, M.D.
Joseph Elman, M.D.
JoAnne Pharo Freed
Kristin Gershfield, M.D. '99
Kent Hackmann
Bert Hansen, Ph.D.
Lewis Strauss
Michael Young

DONATIONS TO THE GENERAL COLLECTION

Dr. Eric Berger, Assistant Professor (Clinical Psychiatry)
Dr. Merle Waxman, Associate Dean,
Director, Office for Women in Medicine
and Ombudsperson
Family of Dr. Gordan Shepherd
Dr. Joseph Elman, Assistant Clinical
Professor (Ophthalmology and Visual
Science)
Dr. Richard A. Matthay, Professor Emeritus,
Senior Research Scientist (Pulmonary
Medicine)
Dr. Eiji Yanagisawa, Professor
(Otolaryngology)

MEDICAL LIBRARY ASSOCIATES

Established in 1948, the Medical Library Associates have supported the Medical Library for over seventy years, helping enable its world-class services to the faculty, staff, and students of the Yale Medical Center, today and for generations to come.

Through the generosity of our Associates, we are able to provide essential support for biomedical education and research. Past examples of what the Medical Library Associates have funded include creating a digital imaging center, purchasing rare books and manuscripts (such as the fourteenth-century Paneth Codex), digitizing collections, and purchasing new exhibition cases for the central rotunda.

Each year, the Associates host a lecture in the Historical Library. Past speakers have included Nobel laureates, writers, professors, and Surgeons General who have lectured on a wide variety of topics relating to medicine. For the 2022 Annual Lecture of the Medical Library Associates, the Associates welcomed Yale School of Public Health Professor of Epidemiology (Microbial Diseases) Serap Aksoy, Ph.D. as the speaker. Dr. Aksoy presented on the topic "Advancing global public health: building bridges across disciplines and advocating for evidence-based health policies" and reflected on her appreciation of libraries.

To make a gift or learn more about becoming a Medical Library Associate, please visit our website. All gifts are tax-deductible.

Staff Highlights

LONG SERVICE AWARDS

15 years – Pamela Gibson, Robert Hughes

10 years – Melissa Grafe

5 years – Alexandria Brackett

NEW STAFF

This year we welcomed eight new staff members in four departments.

Kayla Del Biondo, Simbonis Librarian for Public Health

Justin DeMayo, System and Application Specialist

Sofia Fertuzinhos, Research and Education Librarian for Bioinformatics

Laura Juliano, Term Project Archivist

Megan Nance, Access Services Librarian

Kaitlin Throgmorton, Data Librarian for the Health Sciences

Kyra Walker, Library Services Assistant 4

Akram York, Distributed Support Provider

PROMOTIONS

Promoted to Librarian III – Alexandria Brackett, Alyssa Grimshaw, Caitlin Meyer

Promoted to Librarian V – Melissa Grafe, Lei Wang

RECOGNITION

Head of Access and Delivery Services **Melanie Norton** was recognized for her outstanding leadership of the DiversAbility at Yale (DAY) affinity group. Throughout her career Melanie has been passionate about and responsive to the needs of individuals impacted by disability, and in particular to the challenges students with disabilities encounter when trying to use public spaces and academic libraries.

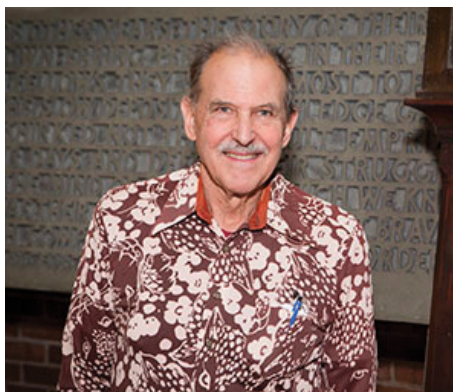
As the co-chair of DAY from 2019 to 2021, Melanie championed the causes of faculty, staff, and students with disabilities (either visible or invisible) to improve their sense of belonging at Yale.



New staff (L to R): Akram York, Justin DeMayo, Sofia Fertuzinhos, Kayla Del Biondo, Kaitlin Throgmorton, Megan Nance, Kyra Walker
Photo: Dana Haugh



Melanie Norton recognized for outstanding leadership of DiversAbility at Yale
Photo: Dana Haugh



(L to R): Jeannette Ponzio, Tom Falco, Alla Mashkauntsan
Photo: Terry Dagradi

RETIREMENTS

Three Medical Library staff members retired this year after a collective 141 years of service. Each person made their mark on the Medical Library in various ways and will be missed.

Library Services Assistant [Jeannette Ponzio](#) joined the Medical Library in 1965 as a library page. Later, she became acting Head of Circulation before moving to Technical Services where she worked in acquisitions and cataloging. Jeannette was involved in the World Health Organization's HINARI initiative, a project enabling underserved nations to gain access to journals and electronic books. Jeannette was instrumental in contributing to the HINARI initiative and thus improving world health.

For over five decades, Rare Book Cataloger [Thomas Falco](#) helped shape the Historical Library's vast collections. From assisting researchers to cataloging rare books to ensuring the timely processing of gifts and acquisitions, Tom's work ensured the continued development of the Historical Library's collection and his attention to detail improved the discoverability of historical resources for generations to come.

Over the years Library Services Assistant [Alla Mashkauntsan](#) provided crucial support to the Access and Delivery Services department including customer service, institutional memory, and resource processing. Her efforts supported the work of thousands of students, faculty, and staff.

PUBLICATIONS

The evidence synthesis and comprehensive searching projects would not be possible without a team of dedicated staff who facilitate article retrieval and citation management: Vermetha Polite, Mary Hughes, Vasean Daniels, Dorota Peglow, Pamela Gibson, Aletia Garvey, and Lisa Sanders.

Janene Batten

2021

"Ensuring rigor in systematic reviews: part 5, quality appraisal, data extraction, synthesis." *Heart Lung*. 2021. Batten J and Brackett A.

"Use of the self- and family management framework and implications for further development." *Nursing Outlook*, 69(6):991-1020. 2021. Schulman-Green D, Feder SL, Montano AR, Batten J, Tan H, Hoang K, and Grey M.

2022

"Ensuring rigor in systematic reviews: part 6, reporting guidelines." *Heart Lung*, 52:22-25. 2022. Batten J and Brackett A.

"Ensuring rigor in systematic reviews: part 7, critical appraisal of systematic review quality." *Heart Lung*. 2022. Brackett A and Batten J.

"Research priority setting: the current landscape of neuroscience nursing research." *Journal of Neuroscience Nursing*. 2022. Hinkle JL, Alexander S, Avanecean D, Batten J, Bautista C, Hundt B, and Rhudy L.

"Understanding sociodemographic disparities in maternal-fetal surgery study participation." *Fetal Diagnosis and Therapy*. 2022. Wilpers A, Lynn AY, Eichhorn B, Powne AB, Lagueux M, Batten J, Bahtiyar MO, and Gross CP.

Alexandria Brackett

2021

"Alternate accesses for transcatheter aortic valve replacement: A network meta-analysis." *Journal of Cardiac Surgery*, 36(11):4308-4319. 2021. Hameed I, Oakley CT, Hameed NUF, Ahmed A, Naem N, Singh S, Rizwana K, Brackett A, Forrest JK, Kaple R, Mangi A, Salemi A, Geirsson A, Gaudino M, and Vallabhajosyula P.

"Ensuring rigor in systematic reviews: part 5, quality appraisal, data extraction, synthesis." *Heart Lung*. 2021. Batten J and Brackett A.

"Identifying clinically applicable machine learning algorithms for glioma segmentation using a systematic literature review." *Neuro-Oncology*, 23: 145. 2021. Tillmanns N, Lum A, Brim WR, Subramanian H, Lin M, Bousabarah K, Malhotra A, Cui J, Brackett A, Payabvash S, Ikuta I, Johnson M, Turowski B, and Aboian M.

"Measuring adherence to tripod of artificial intelligence papers in the glioma segmentation." *Neuro-Oncology*, 23: 137. 2021. Tillmanns N, Lum A, Brim WR, Subramanian H, Lin M, Bousabarah K, Malhotra A, Cui J, Brackett A, Payabvash S, Ikuta I, Johnson M, Turowski B, and Aboian M.

- "Systematic review and meta-analysis of cryopreserved venous conduits for infrainguinal bypass grafting." *Journal of Vascular Surgery*, 74(3): E242-3. 2021. Abouarab AA, Brahmandam A, Brackett A, Rahouma M, Cardella JA, Dardik A, Guzman RJ, and Chaar CIO.
- "A systematic review on the development of machine learning models for differentiating pcnsl from gliomas." *Neuro-Oncology*, 23: 144-5. 2021. Petersen GC, Shatalov J, Brim WR, Subramanian H, Cui J, Johnson M, Malhotra A, Aboian M and Brackett A.
- "Trends in development of novel machine learning methods for the identification of gliomas in datasets that include non-glioma images: a systematic review." *Frontiers in Oncology*, 11:788819. 2021. Subramanian H, Dey R, Brim WR, Tillmanns N, Cassinelli Petersen G, Brackett A, Mahajan A, Johnson M, Malhotra A, and Aboian M.
- 2022
- "Ensuring rigor in systematic reviews: part 6, reporting guidelines." *Heart Lung*, 52:22-25. 2022. Batten J and Brackett A.
- "Ensuring rigor in systematic reviews: part 7, critical appraisal of systematic review quality." *Heart Lung*. 2022. Brackett A and Batten J.
- "Evidence-based clinical practice guidelines for extramammary paget disease." *JAMA Oncology*. 2022. Kibbi N, Owen JL, Worley B, Wang JX, Harikumar V, Downing MB, Aasi SZ, Aung PP, Barker CA, Bolotin D, Bordeaux JS, Cartee TV, Chandra S, Cho NL, Choi JN, Chung KY, Cliby WA, Dorigo O, Eisen DB, Fujisawa Y, Golda N, Halfdanarson TR, Iavazzo C, Jiang SIB, Kanitakis J, Khan A, Kim JYS, Kuzel TM, Lawrence N, Leitao MM Jr, MacLean AB, Maher IA, Mittal BB, Nehal KS, Ozog DM, Pettaway CA, Ross JS, Rossi AM, Servaes S, Solomon MJ, Thomas VD, Tolia M, Voelzke BB, Waldman A, Wong MK, Zhou Y, Arai N, Brackett A, Ibrahim SA, Kang BY, Poon E, and Alam M.
- "Evidence of racial disparities in the lung cancer screening process: a systematic review and meta-analysis." *Journal of General Internal Medicine*. 2022. Kunitomo Y, Bade B, Gunderson CG, Akgün KM, Brackett A, Tanoue L, and Bastian LA.
- "Interventions targeted to address social determinants of health in ischemic heart disease: a sex- and gender-oriented scoping review." *Canadian Journal of Cardiology*, So828-282X(22)00405-6. 2022. Raparelli V, Wright CX, Corica B, Sharma G, Lindley K, Brackett A, Pilote L, Wood MJ, and Dreyer RP.
- "Limited English proficiency as a barrier to inclusion in emergency medicine-based clinical stroke research." *Journal of Immigrant and Minority Health*. 2022. Zeidan AJ, Smith M, Leff R, Cordone A, Moran TP, Brackett A, and Agrawal P.
- "Machine learning in differentiating gliomas from primary CNS lymphomas: a systematic review, reporting quality, and risk of bias assessment." *American Journal of Neuroradiology*, 43(4):526-533. 2022. Cassinelli Petersen GI, Shatalov J, Verma T, Brim WR, Subramanian H, Brackett A, Bahar RC, Merkaj S, Zeevi T, Staib LH, Cui J, Omuro A, Bronen RA, Malhotra A, and Aboian MS.
- "Machine learning applications for differentiation of glioma from brain metastasis-a systematic review." *Cancers (Basel)*, 14(6):1369. 2022. Jekel L, Brim WR, von Reppert M, Staib L, Cassinelli Petersen G, Merkaj S, Subramanian H, Zeevi T, Payabvash S, Bousabarah K, Lin M, Cui J, Brackett A, Mahajan A, Omuro A, Johnson MH, Chiang VL, Malhotra A, Scheffler B, and Aboian MS.
- "Racial differences in adherence to lung cancer screening follow-up: a systematic review and meta-analysis." *Chest*, 161(1): 266-275. 2022. Kunitomo Y, Bade B, Gunderson CG, Akgün KM, Brackett A, Cain H, Tanoue L, and Bastian LA.
- "Systematic review of venous stent migration to the heart." *Journal of Vascular Surgery*, 75(6): E234-5. 2022. Alameddine D, Ali SH, Brackett A, Attaran R, Mojibian H, Tonnessen BH, Guzman RJ, and Chaar CIO.
- Vasean Daniels
- "Support staff take an essential role in research services." *Medical Reference Services Quarterly*, 41(2):148-156. 2022. Polite V, Zollo CC, Hughes MA, Daniels V, El-Hazimy K, Peglow D, Grimshaw AA, and Gibson P.
- Khadija El-Hazimy
- "Support staff take an essential role in research services." *Medical Reference Services Quarterly*, 41(2):148-156. 2022. Polite V, Zollo CC, Hughes MA, Daniels V, El-Hazimy K, Peglow D, Grimshaw AA, and Gibson P.
- Melissa Funaro
- 2022
- "Evidence-based service delivery interventions for testing, linking, treating, and retaining children and adolescents living with HIV in primary health care settings: protocol for a systematic review." *PLoS One*, 17(6):e0269063. 2022. Putta N, Hansen CE, Funaro MC, Campbell M, Essajee S, Mbori-Ngacha D, Frimpong S, Wang SY, and Paintsil E.
- "Generativity among persons providing or receiving peer or mutual support: a scoping review." *Psychiatric Rehabilitation Journal*, 45(2):123-135. 2022. Jordan G, Grazioplene R, Florence A, Hammer P, Funaro MC, Davidson L, and Bellamy CD.
- "Helpful or harmful? The therapeutic potential of medications with varying degrees of abuse liability in the treatment of substance use disorders." *Current Addiction Reports*, 1-13. 2022. Martins B, Rutland W, De Aquino JP, Kazer BL, Funaro M, Potenza MN, and Angarita GA.
- "Introduction to reporting guidelines used in animal research: effectiveness and advocacy." (Book Chapter). In *Finding Your Seat at the Table: Roles for Librarians on Institutional Regulatory Boards and Committees*. Ed. Cantwell LP and Harnett SM. 2022. Funaro M and Nyhan K.
- "Prescription stimulants and the risk of psychosis: a systematic review of observational studies." *Journal of Clinical Psychopharmacology*, 42(3):308-314. 2022. Gallagher KE, Funaro MC, and Woods SW.
- "Prevalence of secondary hypertension in otherwise healthy youth with a new diagnosis of hypertension: a meta-analysis." *Journal of Pediatrics*, S0022-3476(22)00078-6. 2022. Nugent JT, Young C, Funaro MC, Jiang K, Saran I, Ghazi L, Wilson FP, and Greenberg JH.
- "Racial and ethnic differences in alcohol, cannabis, and illicit substance use treatment: a systematic review and narrative synthesis of studies done in the USA." *Lancet Psychiatry*, 9(8):660-675. 2022. Jordan A, Quainoo S, Nich C, Babuscio TA, Funaro MC, and Carroll KM.
- "A systematic review of student disability and race representation in universal school-based social and emotional learning interventions for elementary school students." *Review of Educational Research*. 2022. Cipriano C, Naples LH, Eveleigh A, Cook A, Funaro MC, Cassidy C, McCarthy ME, and Rappolt-Schlichtmann G.
- "An umbrella review on the use of antipsychotics in anxiety disorders: a registered report protocol." *PLoS One*, 17(6):e0269772. 2022. Garakani A, Freire RC, Buono FD, Thom RP, Larkin K, Funaro MC, Salehi M, and Perez-Rodriguez MM.
- "Which maturation indicator is most accurate in predicting cessation of facial growth? A systematic review of the literature." *Journal of Craniofacial Surgery*, 33(3), 764-768. 2022. Reategui A, Phillips S, Khetpal S, Parsaei Y, Funaro M, Mukherjee T, Lopez J, and Steinbacher DM.
- Rolando Garcia-Milian
- 2021
- "Cumulus cells of euploid versus whole chromosome 21 aneuploid embryos reveal differentially expressed genes." *Reproductive Biomedicine Online*, (4):614-626. 2021. Tiegs AW, Titus S, Mehta S, Garcia-Milian R, Seli E, and Scott RT Jr.
- "Desmosterol suppresses macrophage inflammasome activation and protects against vascular inflammation and atherosclerosis." *Proceedings of the National Academy of Sciences of the United States of America*, 118(47):e2107682118. 2021. Zhang X, McDonald JG, Aryal B, Canfrán-Duque A, Goldberg EL, Araldi E, Ding W, Fan Y, Thompson BM, Singh AK, Li Q, Tellides G, Ordovás-Montanes J, García Milian R, Dixit VD, Ikonen E, Suárez Y, and Fernández-Hernando C.

"Distinct roles of KLF4 in mesenchymal cell subtypes during lung fibrogenesis." *Nature Communications*, 12(1):7179. 2021. Chandran RR, Xie Y, Gallardo-Vara E, Adams T, Garcia-Milian R, Kabir I, Sheikh AQ, Kaminski N, Martin KA, Herzog EL, and Greif DM.

"Impaired GSH biosynthesis disrupts eye development, lens morphogenesis and PAX6 function." *Ocular Surface*, 22:190-203. 2021. Thompson B, Chen Y, Davidson EA, Garcia-Milian R, Golla JP, Apostolopoulos N, Orlicky DJ, Schey K, Thompson DC, and Vasiliou V.

2022

"HIV viral transcription and immune perturbations in the CNS of people with HIV despite ART." *JCI Insight*, 7(13): e160267. 2022. Farhadian SF, Lindenbaum O, Zhao J, Corley MJ, Im Y, Walsh H, Vecchio A, Garcia-Milian R, Chiarella J, Chintanaphol M, Calvi R, Wang G, Ndhlovu LC, Yoon J, Trotta D, Ma S, Kluger Y, and Spudich S.

"Liver metabolomics identifies bile acid profile changes at early stages of alcoholic liver disease in mice." *Chemico-Biological Interactions*, 360:109931. 2022. Charkoftaki G, Tan WY, Berrios-Carcamo P, Orlicky DJ, Golla JP, Garcia-Milian R, Aalizadeh R, Thomaidis NS, Thompson DC, and Vasiliou V.

"Peer teaching as bioinformatics training strategy: incentives, challenges, and benefits." *Medical Reference Services Quarterly*, 41(1):13-25. 2022. Rahman NT, Meyer C, Thakral D, Cai WL, Chen AT, Obaid R, and Garcia-Milian R.

Pamela Gibson

"Support staff take an essential role in research services." *Medical Reference Services Quarterly*, 41(2):148-156. 2022. Polite V, Zollo CC, Hughes MA, Daniels V, El-Hazimy K, Peglow D, Grimshaw AA, and Gibson P.

Melissa Grafe

2021

"Treating the digital disease: the role of digital and physical primary sources in undergraduate teaching." *RBM: A Journal of Rare Books, Manuscripts, and Cultural Heritage*. 22(1): 25-32. 2021.

2022

"A history of medical libraries and medical librarianship: from John Shaw Billings to the digital era." (Book Review). *Bulletin of the History of Medicine*, 96(1): 136-138. 2022.

"The scientific journal: authorship and the politics of knowledge in the nineteenth century." (Book Review). *Journal of the Medical Library Association*, 110(2): 267-68. 2022.

Alyssa Grimshaw

2021

"Evaluation of diagnostic yield of EUS among patients with asymptomatic common bile duct dilation: systematic review and meta-analysis." *Gastrointestinal Endoscopy*, 94(5):890-901.e8. 2021. Chhoda A, Dawod S, Grimshaw A, Gunderson C, and Mahadev S.

"Hypomethylating agents and FLT3 inhibitors as maintenance treatment for acute myeloid leukemia and myelodysplastic syndrome after allogeneic hematopoietic stem cell transplantation-a systematic review and meta-analysis." *Transplantation Cellular Therapy*, 27(12):997.e1-997.e11. 2021. Bewersdorf JP, Allen C, Mirza AS, Grimshaw AA, Giri S, Podoltsev NA, Gowda L, Cho C, Tallman MS, Zeidan AM, and Stahl M.

"Immune checkpoint inhibitor-associated diarrhea and colitis: a systematic review and meta-analysis of observational studies." *Journal of Immunotherapy*, 44(8):325-334. 2021. Tran AN, Wang M, Hundt M, Chugh R, Ohm J, Grimshaw A, Ciarleglio M, Hung KW, Proctor DD, Price CC, Laine L, and Al-Bawardy B.

"Outcomes of allogeneic hematopoietic cell transplantation in patients with myelofibrosis-a systematic review and meta-analysis." *Transplantation and Cellular Therapy*, 27(10):873.e1-873.e13. 2021. Bewersdorf JP, Sheth AH, Vetsa S, Grimshaw A, Giri S, Podoltsev NA, Gowda L, Tamari R, Tallman MS, Rampal RK, Zeidan AM, and Stahl M.

"Risk of intestinal necrosis with sodium polystyrene sulfonate: a systematic review and meta-analysis." *Journal of Hospital Medicine*, 16(8):489-494. 2021. Holleck JL, Roberts AE, Marhoffer EA, Grimshaw AA, and Gunderson CG.

"A systematic review and meta-analysis of studies evaluating the effect of medication treatment for opioid use disorder on infectious disease outcomes." *Open Forum Infectious Diseases*, 8(8). 2021. McNamara KF, Biondi BE, Hernández-Ramírez RU, Taweh N, Grimshaw AA, and Springer SA.

2022

"Antiplatelet monotherapy is associated with an increased risk of bleeding after endoscopic sphincterotomy." *Digestive Diseases and Sciences*, 67(8): 4161-4169. 2022. Zakko A, Zakko L, Grimshaw AA, and Laine L.

"Benefit of extended surveillance of low-risk pancreatic cysts after five-year stability: a systematic review and meta-analysis." *Journal of Clinical Gastroenterology and Hepatology*, S1542-3565(22)00450-5. 2022. Chhoda A, Singh S, Sheth AH, Grimshaw AA, Gunderson C, Sharma P, Kunstman JW, Sharma A, Ahuja N, Gonda T, and Farrell JJ.

"Clinical presentation, risk factors, and outcomes of immune effector cell-associated neurotoxicity syndrome following chimeric antigen receptor T cell therapy: a systematic review." *Transplantation and Cellular Therapy*, S2666-6367(22)00153-1. 2022. Grant SJ, Grimshaw AA, Silberstein J, Murdaugh D, Wildes TM, Rosko AE, and Giri S.

"Dental education practices during COVID-19: a scoping review." *Journal of Dental Education*, 2022. Kerkstra RL, Rustagi KA, Grimshaw AA, and Mingos KE.

"Drug repurposing: a systematic review on root causes, barriers and facilitators." *BMC Health Services Research*, 22(1): 970. 2022. Krishnamurthy N, Grimshaw AA, Axson SA, Choe SH, and Miller JE.

"Late-stage pancreatic cancer detected during high-risk individual surveillance: a systematic review and meta-analysis." *Gastroenterology*, 162(3):786-798. 2022. Chhoda A, Vodusek Z, Wattamwar K, Mukherjee E, Gunderson C, Grimshaw AA, Sharma A, Ahuja N, Kastrinos F, and Farrell JJ.

"The medical community's evolving focus on physician and surgeon pregnancy: thematic trends from a scoping review." *Academic Medicine*, 97(7):1071-1078. 2022. Hanchuk S, Casilla-Lennon M, Zheng, Kim DD, Press B, Nguyen JV, Grimshaw AA, Leapman MS, Rickey LM, and Cavallo JA.

"Microangiopathic hemolytic anemia is a late and fatal complication of gastric signet ring cell carcinoma: a systematic review and case-control study." *Oncologist*. 2022. Lam R, Tarangelo N, Wang R, Horibe M, Grimshaw AA, Jain D, Haffar S, Bazerbachi F, Kunz PL, and Li DK.

"The pioneering and diverse contributions of Leonard N. Zinman, M.D. to urology." *Urology*, 160:5-9. 2022. Green J, Pagura EJ, Hanchuk S, Casilla-Lennon M, Grimshaw AA, Vanni AJ, and Cavallo JA.

"Pregnancy in physicians: a scoping review." *American Journal of Surgery*, 223(1):36-46. 2022. Casilla-Lennon M, Hanchuk S, Zheng S, Kim DD, Press B, Nguyen JV, Grimshaw AA, Leapman MS, and Cavallo JA.

"SARS-CoV-2 infection and COVID-19 outcomes in rheumatic diseases: a systematic literature review and meta-analysis." *Arthritis and Rheumatology*, 74(5):766-775. 2022. Conway R, Grimshaw AA, Konig MF, Putman M, Duarte-García A, Tseng LY, Cabrera DM, Chock YPE, Degirmenci HB, Duff E, Egeli BH, Graef ER, Gupta A, Harkins P, Hoyer BF, Jayatilleke A, Jin S, Kasia C, Khilnani A, Kilian A, Kim AHJ, Lin CMA, Low C, Proulx L, Sattui SE, Singh N, Sparks JA, Tam H, Ugarte-Gil MF, Ung N, Wang K, Wise LM, Yang Z, Young KJ, Liew JW, Grainger R, Wallace ZS, Hsieh E, and COVID-19 Global Rheumatology Alliance.

"Shortening the duration of dual antiplatelet therapy after percutaneous coronary intervention for acute coronary syndrome: a systematic review and meta-analysis." *American Heart Journal*, 251: 101-114. 2022. Park DY, Wang P, An S, Grimshaw AA, Frampton J, Ohman EM, Rao SV, and Nanna MG.

"Support staff take an essential role in research services." *Medical Reference Services Quarterly*, 41(2):148-156. 2022. Polite V, Zollo CC, Hughes MA, Daniels V, El-Hazimy K, Peglow D, Grimshaw AA, and Gibson P.

"Systematic literature review of pediatric male and female genital hair thread tourniquet syndrome." *Pediatric Emergency Care*, 38(2):e799-e804. 2022. Adjei NN, Lynn AY, Grimshaw A, Brault MA, Dugan K, and Vash-Margita A.

Dana Haugh

"Marketing and social media: a guide for libraries, archives, and museums." (Book Review). *Journal of the Medical Library Association*, 109(4): 526-527. 2021.

Mary Hughes

"Support staff take an essential role in research services." *Medical Reference Services Quarterly*, 41(2):148-156. 2022. Polite V, Zollo CC, Hughes MA, Daniels V, El-Hazimy K, Peglow D, Grimshaw AA, and Gibson P.

Caitlin Meyer

"Peer teaching as bioinformatics training strategy: incentives, challenges, and benefits." *Medical Reference Services Quarterly*, 41(1):13-25. 2022. Rahman NT, Meyer C, Thakral D, Cai WL, Chen AT, Obaid R, and Garcia-Milian R.

Melanie Norton

"Striving for equity: an update from the Journal of the Medical Library Association." *Journal of the Medical Library Association*, 109(3):359-361. 2021. Akers KG, Aaronson EM, Amos K, Bartley K, Carroll AJ, Chambers T, Cyrus JW, Eldermire ERB, Linares B, Murphy B, Norton MJ, Pionke JJ, and Reyes A.

Kate Nyhan

2021

"Intersectional stigma and its impact on HIV prevention and care among MSM and WSW in sub-Saharan African countries: a protocol for a scoping review." *BMJ Open*, 11(8): e047280. 2021. Abubakari GM, Dada D, Nur J, Turner D, Otchere A, Tanis L, Ni Z, Mashoud IW, Nyhan K, Nyblade L, and Nelson LE.

"Preterm birth among Pacific Islander women and related perinatal outcomes: a scoping review protocol." *BMJ Open*, 11(11):e050483. 2021. Wu B, Arslanian KJ, Nyhan K, Taylor S, Shabanova V, Muasau-Howard B, and Hawley NL.

"Sexual health (excluding reproductive health, intimate partner violence and gender-based violence) and COVID-19: a scoping review." *Sexually Transmitted Infections*, 97(6): 402-410. 2021. Kumar N, Janmohamed K, Nyhan K, Forastiere L, Zhang WH, Kägesten A, Uhlich M, Sarpong Frimpong A, Van de Velde S, Francis JM, Erasquin JT, Larrson E, Callander D, Scott J, Minichiello V, and Tucker J.

2022

"Agreement of treatment effects from observational studies and randomized controlled trials evaluating hydroxychloroquine, lopinavir-ritonavir, or dexamethasone for COVID-19: meta-epidemiological study." *BMJ*, 377:e069400. 2022. Moner O, Daly G, Skydel JJ, Nyhan K, Lurie P, Ross JS, and Wallach JD.

"Effect modification by sex for associations of fine particulate matter (PM_{2.5}) with cardiovascular mortality, hospitalization, and emergency room visits: systematic review and meta-analysis." *Environmental Research Letters*, 17(5). 2022. Heo S, Son JY, Lim CC, Fong KC, Choi HM, Hernandez-Ramirez RU, Nyhan K, Dhillon PK, Kapoor S, Prabhakaran D, Spiegelman D, and Bell ML.

"Factors associated with HIV acquisition in the context of humanitarian crises: a scoping review protocol." *JBI Evidence Synthesis*. 2022. Harsono D, Peterson H, Nyhan K, and Khoshnood K.

"Impact of baby behaviour on caregiver's infant feeding decisions during the first 6 months of life: a systematic review." *Maternal and Child Nutrition*, 18 Suppl 3:e13345. 2022. Vilar-Compte M, Pérez-Escamilla R, Orta-Aleman D, Cruz-Villalba V, Segura-Pérez S, Nyhan K, and Richter LM.

"Impact of prelacteal feeds and neonatal introduction of breast milk substitutes on breastfeeding outcomes: a systematic review and meta-analysis." *Maternal and Child Nutrition*, 18 Suppl 3:e13368. 2022. Pérez-Escamilla R, Hromi-Fiedler A, Rhodes EC, Neves PAR, Vaz J, Vilar-Compte M, and Segura-Pérez S, and Nyhan K.

"Interventions to mitigate COVID-19 misinformation: protocol for a scoping review." *Systematic Reviews*, 11(1):107. 2022. Kumar N, Walter N, Nyhan K, Khoshnood K, Tucker JD, Bauch CT, Ding Q, Jones-Jang SM, De Choudhury M, Schwartz JL, Papakyriakopoulos O, and Forastiere L.

"Interventions to mitigate vaping misinformation: a meta-analysis." *Journal of Health Communications*, 27:1-9. 2022. Janmohamed K, Walter N, Sangngam N, Hampsher S, Nyhan K, de Choudhury M, and Kumar N.

"Introduction to reporting guidelines used in animal research: effectiveness and advocacy." (Book Chapter). In *Finding Your Seat at the Table: Roles for Librarians on Institutional Regulatory Boards and Committees*. Ed. Cantwell LP and Harnett SM. 2022. Funaro M and Nyhan K.

"Non-targeted metabolomics and associations with per- and polyfluoroalkyl substances (PFAS) exposure in humans: a scoping review." *Environmental International*, 26;162:107159. 2022. Guo P, Furnary T, Vasiliou V, Yan Q, Nyhan K, Jones DP, Johnson CH, and Liew Z.

"Pregnancy health and perinatal outcomes among Pacific Islander women in the United States and US Affiliated Pacific Islands: protocol for a scoping review." *PLoS One*, 17(1): e0262010. 2022. Suss R, Mahoney M, Arslanian KJ, Nyhan K, and Hawley NL.

"Risk factors for self-reported insufficient milk during the first 6 months of life: a systematic review." *Maternal and Child Nutrition*, 18 Suppl 3:e13353. 2022. Segura-Pérez S, Richter L, Rhodes EC, Hromi-Fiedler A, Vilar-Compte M, Adnew M, Nyhan K, and Pérez-Escamilla R.

"School closures and reopenings during the COVID-19 pandemic: a scoping review protocol." *BMJ Open*, 12(2), e054292. 2022. Li D, Nyhan K, Zhou X, Zhu Y, Castro D, Vermund SH, and Brault M.

"Substance, use in relation to COVID-19: a scoping review." *Addictive Behaviors*, 127:107213. 2022. Kumar N, Janmohamed K, Nyhan K, Martins SS, Cerda M, Hasin D, Scott J, Sarpong Frimpong A, Pates R, Ghandour LA, Wazaify M, and Khoshnood K.

Dorota Peglow

"Support staff take an essential role in research services." *Medical Reference Services Quarterly*, 41(2):148-156. 2022. Polite V, Zollo CC, Hughes MA, Daniels V, El-Hazimy K, Peglow D, Grimshaw AA, and Gibson P.

Vermetha Polite

"Support staff take an essential role in research services." *Medical Reference Services Quarterly*, 41(2):148-156. 2022. Polite V, Zollo CC, Hughes MA, Daniels V, El-Hazimy K, Peglow D, Grimshaw AA, and Gibson P.

Judy Spak

"Structure and impact of longitudinal Graduate Medical Education curricula designed to prepare future clinician-educators: a systematic scoping review: BEME Guide No. 74." *Medical Teacher*, 23: 1-15. 2022. Yang Y, Gielissen K, Brown B, Spak J, and Windish DM.

Lei Wang

"Publish or perish: a cross-sectional, bibliometric analysis of physician assistant faculty publications." *The Journal of Physician Assistant Education*, 33(2), 87-93. 2022. Garino A, Wang L, and Min EA.

PRESENTATIONS

2021

Batten J, Nyhan K, Grossetta Nardini HK. “Editors and authors benefit from librarian involvement in peer review.” International Academy of Nursing Editors Annual Meeting.

Brackett A, Christensen L, Doering M, and Wescott A. “Project teamwork! Creating a successful collaborative scoping review process across four academic libraries.” North Atlantic Health Sciences Libraries Annual Meeting.

Dagradi T, Brackett A. “Collecting and connecting the knowledge of the past, present & future.” Yale School of Medicine Neuroscience Grand Rounds.

Del Biondo K. “Mindful journaling: micro-gratitude, manifestation & more.” American Public Health Association Annual Conference.

Funaro M, Brackett A, Grimshaw A, Haugh D, Nemeth Z. “The Covid-19 pandemic and its effect on service for a clinical librarian team in an academic library.” (Poster Session). North Atlantic Health Science Libraries Annual Meeting.

Grimshaw A. “Impact of PRISMA 2020 reporting guidelines on systematic review services.” North Atlantic Health Science Libraries Annual Meeting.

McConnell MJ, Yang YL, Garcia-Milian R, Jeong J, Utsumi T, Hwa J, and Iwakiri, Y. “Proinflammatory, procoagulant platelet phenotype in patients with alcohol-associated liver disease arising from dynamic transcriptomic and proteomic alterations.” AASLD The Liver Meeting.

Meyer C, Gonzalez-Colaso R. “No stone unturned: librarians as partners in longitudinal research curricula.” Workshop. Physician Assistant Education Association.

2022

Brombosz C. “NAHSL as a professional organization.” Yale University Library Standing Committee on Professional Awareness.

Carlson R, Roth S, Grimshaw A. “Talking tools: an introduction to systematic review tools: part 1.” Medical Library Association Annual Meeting.

Del Biondo K. “Communicating the value of the medical library early and often at a school of public health.” Medical Library Association Annual Meeting.

Funaro MC, Jordan G, Bocalini MB, Florence A, Cabrini D, Tanzi R. “A search method to identify relevant information for a scoping review: a case report on systematic citation searching.” (Poster Session). Medical Library Association Annual Meeting.

Garcia-Milian R. “NCBI’s MyBibliography and Biosketch for grant application.” National Science Foundation Career Award Series.

Grafe, M. “Supporting the Keggi-Rubin hip implant collection at the Medical Historical Library.” Yale School of Medicine Orthopaedic and Rehabilitation Grand Rounds.

Grimshaw A. “Impact of PRISMA 2020 reporting guidelines on systematic review services.” Medical Library Association Annual Meeting.

Meyer C, Haugh D. “Turning feedback into action.” Paper presentation. Medical Library Association Annual Meeting.

Nyhan K, Grimshaw A. “Reporting of the identification of studies through other means in evidence synthesis: a cross sectional study.” Medical Library Association Annual Meeting.

Roth S, Vanderboll K, Nyhan K, Brennan E, and Grimshaw A. “Talking tools: an introduction to systematic review tools: part 2.” Medical Library Association Annual Meeting.

ACKNOWLEDGMENTS

Janene Batten in “Structural violence: an evolutionary concept analysis.” *Journal of Advanced Nursing*.

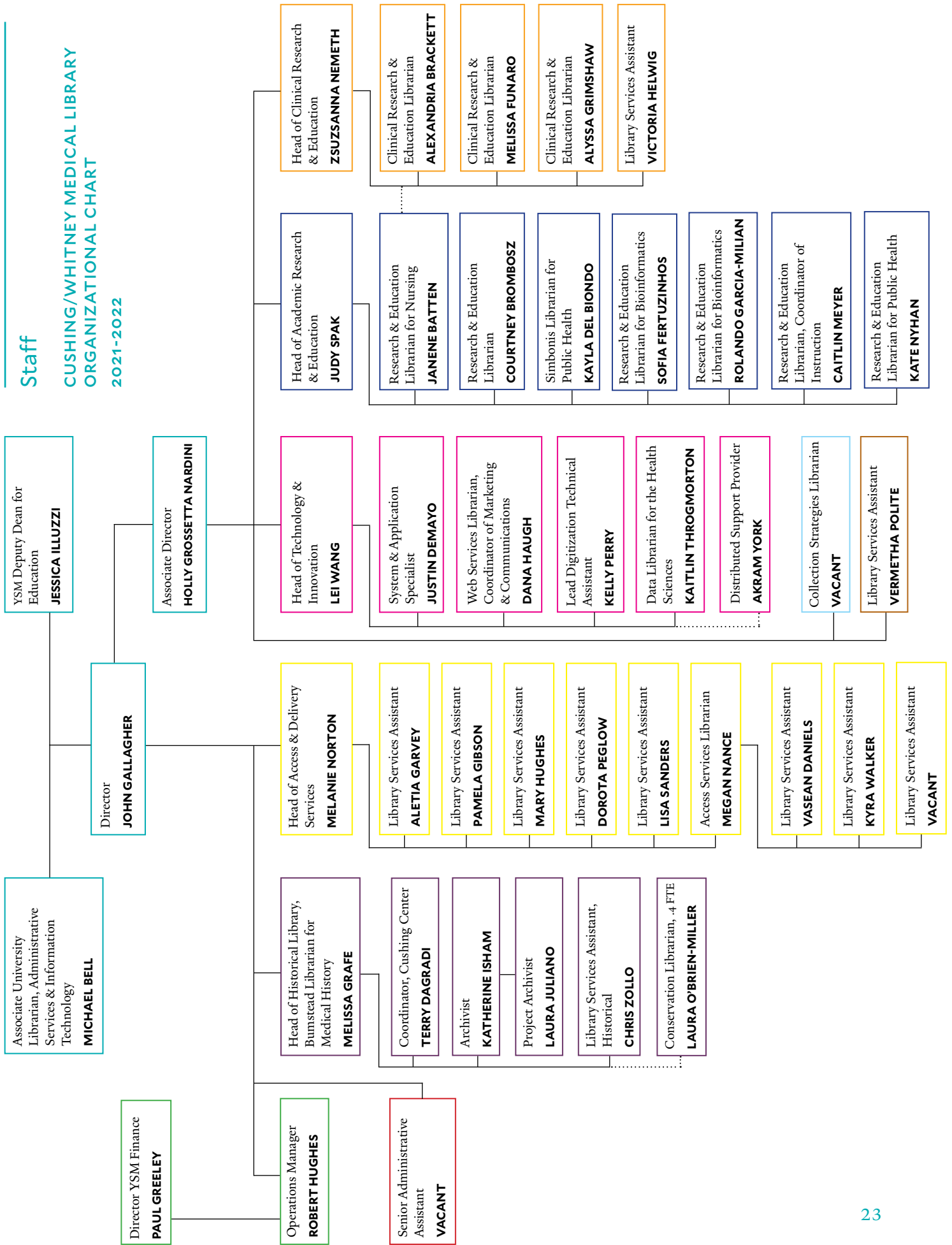
Dorota Peglow and Vermetha Polite in “Evidence-based service delivery interventions for testing, linking, treating, and retaining children and adolescents living with HIV in primary health care settings: protocol for a systematic review.” *PLoS One*.

Mary Hughes and Vermetha Polite in “Prevalence of secondary hypertension in otherwise healthy youth with a new diagnosis of hypertension: a meta-analysis.” *The Journal of Pediatrics*;
“Racial and ethnic differences in alcohol, cannabis, and illicit substance use treatment: a systematic review and narrative synthesis of studies done in the USA.” *The Lancet Psychiatry*;
“Machine learning in differentiating gliomas from primary CNS lymphomas: a systematic review, reporting quality, and risk of bias assessment.” *American Journal of Neuroradiology*.

Vermetha Polite in “An umbrella review on the use of antipsychotics in anxiety disorders: a registered report protocol.” *PloS One*.

Staff

CUSHING/WHITNEY MEDICAL LIBRARY ORGANIZATIONAL CHART 2021-2022



Yale *Harvey Cushing / John Hay Whitney Medical Library*

333 Cedar Street, PO Box 208014, New Haven, Connecticut 06520-8014



Oil portraits of Dorothy Horstmann, M.D. and Beatrix McCleary Hamburg, M.D. frame the Medical Library's entrance in the Sterling Hall of Medicine

Photo: Terry Dagradi



library.medicine.yale.edu



[instagram.com/yalemedhistlib](https://www.instagram.com/yalemedhistlib)



vimeo.com/yalemedlib