

Harvey Cushing / John Hay Whitney  
Medical Library, Yale University

*Annual Report, 2014–2015*





## Contents

- 2 Welcome
- 3 Special Report:  
Innovation
- 4 Research Services
- 5 Clinical Services
- 6 Education Services
- 7 Collections
- 10 Library as Place
- 11 Special Happenings
- 12 Exhibits
- 14 Major Gifts
- 15 Donors
- 16 Staff Highlights
- 18 Staff
- 19 In Memoriam

Cover: This year's library orientation for medical students was run on the students' own devices using an online presentation and audience response system developed in-house at the Medical Library by Lei Wang. This system allows the presenter to control the advancement of slides, ask polling questions, and display real-time polling results, all on the audience's own devices.

Photo: Kelly Perry

## Welcome

In 2005 then Director of the National Library of Medicine (NLM) Donald Lindberg, M.D., and Betsy Humphreys, Deputy Director of the NLM, published a perspective article in the *New England Journal of Medicine* entitled "2015—The Future of Medical Libraries."\* The authors envisioned what medical libraries might look like within ten years given rapid advances in technology, medicine, and the sciences.

Well, here we are! It gives me great pleasure to document another successful year of providing excellent service, an extensive array of resources and tools, and collaboration with our users to achieve their research, patient care, educational, and intellectual goals. In 2015 medicine and science move forward in leaps rather than steps, and discoveries unfold more rapidly. This annual report highlights the various strategies and activities the library has employed to innovate and anticipate our users' needs:

- More than 200 researchers registered to use both Ingenuity Pathway Analysis and MetaCore, end-user bioinformatics tools piloted by the library to make it easier for researchers to analyze genomics data.
- The library created a Cross-Departmental Public Services Team to deftly respond to patron and library needs.
- The library staff supported more than thirty systematic review teams.
- Clinical information resources UpToDate, ClinicalKey, and VisualDx were jointly licensed with Yale New Haven Health System partner libraries and integrated into Epic for convenient access by clinicians.
- An array of events and exhibits attracted new users to the library and exposed them to our remarkable historical collections.
- Librarians' involvement in curricula resulted in increased teaching in courses across the campus.
- The library successfully delivered its Information Survival Skills Elective to medical students in November and January.



Photo: Joanne Wilcox

The Cushing/Whitney Medical Library has a wonderful and dedicated team of librarians and staff. While individual responsibilities and areas of expertise vary widely, all staff sincerely share the utmost commitment to support your research, patient-care, and educational goals in the coming year and beyond.

John Gallagher  
*Interim Director*

\*Available online at <http://dx.doi.org/10.1056/NEJMp048190>.

## Special Report: Innovation

The library launched two significant innovations this year: novel bioinformatics services and a restructuring of staff to enhance operations.

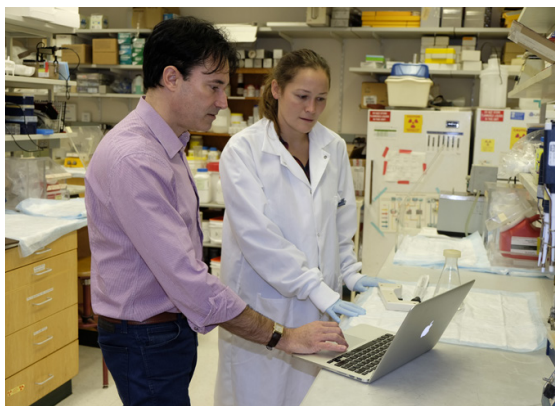
### BIOINFORMATICS SUPPORT

The Cushing/Whitney Medical Library established an end-user bioinformatics program in support of researchers at the Yale School of Medicine (YSM). Rolando García-Milian joined the library in May 2014 and immediately set to work on this exciting new venture. The program's primary goals are to provide support on three main fronts: resources, training, and consultations.

At its core, the program provides bioinformatics support and equal access to resources and software for all biomedical researchers within the Medical Center. The ability to access and examine molecular data is no longer restricted to bioinformaticians or those with exceptional computer skills. The Medical Library piloted the addition of two of the most powerful and popular tools for the analysis of omics data: Ingenuity Pathway Analysis (IPA) and MetaCore. The library obtained two site licenses on a trial basis, with two concurrent users each. As a result, some units discontinued their individual licenses to these software programs and are using the Medical Library's site license, resulting in significant savings for individual researchers

“Thank you again for your continued work to get the IPA licenses for Yale researchers; this is of tremendous support for the work that we do here at our MS and Proteomics resource for Yale investigators.”

— TuKiet T. Lam, Ph.D., Director, FT-ICR MS Resource, MS & Proteomics Resource, Molecular Biophysics & Biochemistry



Rolando García-Milian consulting with a student in Dr. Susan Baserga's laboratory  
*Photo: Terry Dagradi*



IPA training session on May 22, 2015

and labs. More than 170 users have registered to use MetaCore, and more than 220 users have registered to use IPA.

Rolando pioneered training sessions focusing on end-user bioinformatics tools and invited speakers such as those from the Lister Hill National Center for Biomedical Communications and the Jackson Laboratory to present on Semantic MEDLINE and Mouse Genome Informatics, respectively. The Medical Library also hosted commercial bioinformatics software training for BIOBASE, IPA, and MetaCore, and numerous National Center for Biotechnology Information (NCBI) webinars. More than 600 people attended these valuable training sessions.

Rolando is a member of the newly created Data Management Plan Consultation Group, a partnership between Yale University Library (YUL) and Information Technology Services (ITS) that offers consultation services to assist researchers in creating data management plans required for grant proposals. As part of this group, Rolando has helped YSM researchers fulfill their data management requirements.

## CROSS-DEPARTMENTAL PUBLIC SERVICES TEAM

Transformations in technology, medicine, and health care require transformations in the collections, services, and support provided by health sciences libraries. Growth of the Yale New Haven Medical Center combined with changing user needs and expectations motivated the Medical Library to evaluate its ability to keep pace. Dramatic increases in demand for comprehensive searches and systematic reviews, author and department research impact measurement services, bioinformatics services, and general reference support as well as gradual declines in other service areas reinforced the decision to analyze our staffing structure.

After assessing processes, workflows, and individual responsibilities of many of the clerical and technical (C&T) staff, librarians and staff devised a novel team approach that would allow our C&T staff to work across departmental lines to provide a broader variety of both in-depth support and frontline services. The creation of a Cross-Departmental Public Services Team (CDT) enables the library to easily accommodate spikes in volume in any of the services supported by the team and to undertake new projects as they arise. With the support of this team, librarians have been able to expand outreach efforts and provide more robust services. The restructuring has provided opportunities for team members to develop additional skills and support our users in new and meaningful ways.



“The formation of the CDT is advantageous to our users. Working across departments allows team members to deliver library services more effectively and promotes communication throughout the library.”

— Vermetha Polite

Members of the CDT, l. to r.: Mary Hughes, Vermetha Polite, Alyssa Grimshaw. Not pictured: Khadija El-Hazimy, Pamela Gibson, Kelly Perry  
*Photo: Kelly Perry*

## Research Services

Librarians have become increasingly involved in research teams requiring sophisticated, comprehensive searches. One example is the systematic review, a protocol-driven, exhaustive literature review, usually designed to answer a specific clinical question. Our librarians have been on more than thirty project teams and have coauthored more than ten systematic review articles in the biomedical literature. Our expert search services include:

- Formulating an appropriate search strategy from a research question or protocol
- Translating the search concepts into controlled vocabulary and keywords so that both precision and retrieval are maximized

- Conducting literature searches across multiple information sources
- Maintaining precise records of search results and following up with alerts and updates
- Providing guidance and support regarding bibliographic management tools, such as EndNote or RefWorks, to manage citations and easily produce bibliographies
- Writing the literature search methodology section for the submitted manuscript

Librarians are contributing to this important body of evidence-based literature.



## Clinical Services

Librarians continued to expand services into clinical areas. By being available at the point of need, members of our clinical team, Mark Gentry, Denise Hersey, Janene Batten, and Holly Grossetta Nardini, are able to assist physicians, residents, nurses, PAs, and hospital staff to find the best and most appropriate information for their research and patient-care needs. This work takes place in the intensive care units, radiology reading rooms, operating room suites, and emergency departments, ensuring that clinical staff have the information they need when and where they need it. Librarians round with the Cardiothoracic and Surgical Critical Care and Surgical Acute Care teams in the CTICU and SICU and with the Saint Raphael campus Medicine teaching service. By restructuring library services, our outreach efforts were expanded to Pediatrics, Dermatology, Maxillofacial Surgery, Dentistry, Ophthalmology, and Orthopaedics. Librarians played a valuable role in supporting the Yale-New Haven Hospital Charter Teams by supplying them with the most recent and evidence-based research to support their work in improving patient safety.

Our proactive efforts allow faculty, residents, and students to have full and easy access to library resources in all clinical venues. The number of library resources available within Epic, the health system's electronic health record, has increased with the system-wide contract for ClinicalKey. There are now health system contracts in place

for three resources — ClinicalKey, UpToDate, and VisualDx. Negotiating system-wide contracts for these clinical resources not only enables them to be linked through Epic but also results in savings on contracts for all of the health system hospitals.

The clinical team worked with Yale New Haven Health System IT to ensure that the secure hospital WiFi network provides full access to Yale resources while limiting access to licensed content on the Health System's open guest WiFi network. The clinical team convinced Yale University ITS project staff to make the Yale-New Haven Hospital (YNHH) network a trusted entity, thereby eliminating the need for Yale affiliates on that network to perform secondary authentication to access library resources.

The library has continued to increase our participation in didactic and hands-on sessions for residency and fellowship programs to contribute to the achievement of ACGME requirements for residency programs. Discussions with Dr. Rosemarie Fisher, Associate Dean for Graduate Medical Education, and others from her staff helped librarians focus on residency programs whose scholarly activity requirements are more stringent. In addition, the clinical support librarians are active members of the Graduate Medical Education Committee, attending the annual retreat and regular monthly meetings in which a Library Update is a standing agenda item.



Denise Hersey meeting  
with clinicians  
*Photo: Mark Gentry*

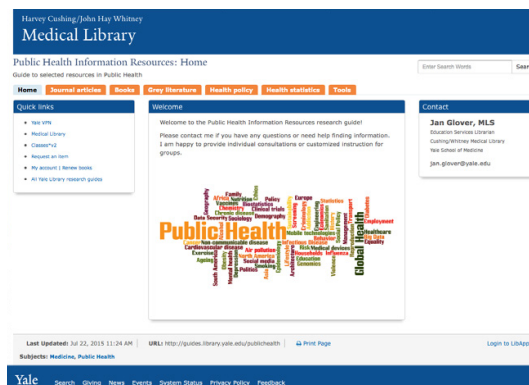
## Education Services

In November 2014 and January 2015, the library offered medical students a two-week intensive elective focusing on information skills needed to answer immediate clinical and long-term research questions as well as form a strong foundation for lifelong learning. Topics include research/clinical question development, complex search strategy development, tips and techniques for searching both academic and grey literature, critical appraisal and evaluation of information, research impact enhancement, and much more. The ten two-hour sessions are highly interactive, and many colleagues from across the University Library shared their expertise with the students. Student evaluations have been incredibly positive. The elective is in the School of Medicine's Elective Catalog Listing and is offered four to six times a year.

As the School of Nursing curriculum redesign continued, Janene Batten actively contributed by ensuring an information-seeking component was inserted into YSN courses. Janene was also involved in the Doctor of Nursing Practice program, teaching a major section of the Evidence-Based Practice course and participating in overall programmatic decisions.

Working with Dr. Kirsten Wilkins, Director of Clerkships, Jan Glover and Judy Spak created and presented a proposal to all clerkship directors for the inclusion of a library component in the new YSM curriculum. Based on that presentation, Drs. Dana Dunne and Daniel DiCapua (Medical Approach to the Patient) and Dr. Wilkins (Psychiatry) requested specific sessions for their clerkships. Librarians delivered these sessions in June: an evidence-based medicine session in the Medical Approach clerkship, "Boot Camp/Precede"; and a session on searching the literature to students in the Primary Care and Mental Health clerkship directly related to their write-up assignment during their first day of didactics.

Susan Wheeler and Melissa Grafe offered hands-on sessions to more than 340 undergraduates in the course Media and Medicine in Modern America, taught by John Warner, PH.D, and Gretchen Berland, M.D. They used posters from the Historical Library's collections to introduce students to research and reading primary sources. Additional sessions were added for more than



Students clustered around Susan Wheeler during a hands-on session  
*Photo: Terry Dagradi*

A screenshot of the Public Health research guide

twenty Internal Medicine and clinical staff at the Yale Primary Care Center. Other classes using Historical Library materials and supported by staff include: Mental Illness in American Society; Photography and Science; Science and Religion; Art of the Printed Word; Early Modern Science and Medicine; Spies, Secrets, and Science; and The Scientific Revolution. Melissa Grafe met with nearly thirty senior thesis writers in the Program in the History of Science and Medicine.

Librarians across the Medical Library constructed research guides to facilitate access to a wide range of library resources and services. These guides pull together thematic and subject-specific content and present it in a packaged format, enhancing patrons' ability to easily locate information. Guides created this year include Public Health, Medical Education Services, Systematic Reviews, Health Statistics, and Library Resources for YSM Clerkships.



## MEDICAL EDUCATION DAY AT YALE SCHOOL OF MEDICINE

Judy Spak provided a review of the education literature and served on the panel “Ideas and Innovations: Review of the 2014 Education Literature” with Alexandria Garino, M.S., P.A.-C.; Rosana Gonzalez-Colaso, PHARM.D., M.P.H.; Philip Martinez, M.S.N., A.P.R.N.-B.C.; Brita Roy, M.D.; and Donna Windish, M.D., M.P.H. Lei Wang, along with Gary Leydon and David Hafler, M.D., M.Sc., and Kumar Navaratnam, M.D., PH.D., presented a workshop, “A Deep Dive into Flipping the Curriculum with an Instructional Video.”



Judy Spak and other Medical Center faculty on the “Ideas and Innovations” panel

## NEW MEDICAL LIBRARY TRAINING SESSIONS OFFERED THIS YEAR

Basics of Unix  
GIS: a three-part series  
BioMart: A Research Data Management Tool for the Biomedical Sciences  
Tools for Enrichment Analysis  
Introduction to Genome Browsers  
MyBibliography and SciENcv  
Making Sense of Genomic Variation



Holly Grossetta Nardini teaching fellows and postdocs  
Photo: Terry Dagradi

**13,101** Reference questions answered

**22** Faculty members trained to create 40 videos, 20 for the flipped curriculum and 20 used for other educational purposes

**80,682** online tutorials downloaded

**395** Classes and orientations provided by the library, including expanded evening class times

**265,828** Scans, photocopies, and pages printed on our public multifunction machines

**1,580** Links to library resources provided for 68 courses

**215,121** Visitors to the physical Medical Library

**1,172,663** Visitors to the Medical Library's homepage

## Collections



The Louise Darling Medal for Distinguished Achievement in Collection Development in the Health Sciences  
Photo: Kelly Perry

The Medical Library Association (MLA) awarded its Louise Darling Medal for Distinguished Achievement in Collection Development in the Health Sciences for 2015 to the HINARI Access to Research in Health Programme. HINARI partners with publishers around the world to deliver scholarly health information and content (articles, books, and databases) to developing countries that could not otherwise afford these resources. Under the guidance of Nathan Rupp, Head of Collection Development and Management, the Medical Library plays an essential role in supporting this program by entering metadata into the HINARI database for new books and journals each year. HINARI, headquartered at the World Health Organization in Geneva, is one of the Research4Life programs, with AGORA (agriculture), ARDI (applied technology), and OARE (environment). Yale University Library is a founding partner in Research4Life, starting with the launch of HINARI in 2002.



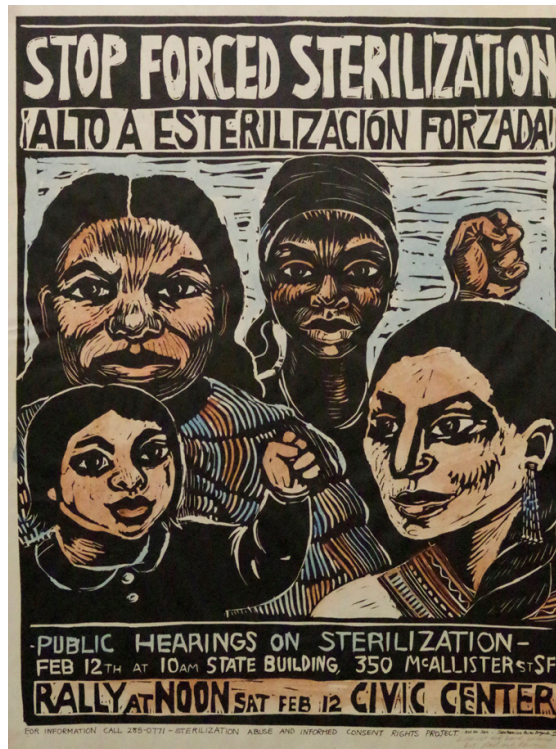
Doctor Pollard leads Ethics Rounds  
 Crystal, 25 year old white female, is married to a man. Late stage  
 of HIV. In months of diagnosis, including Kaposi's, lymphoma,  
 wasting, severe dehydration. Patient is refusing medication. Doctor does  
 what he can but nothing is. Patient wants to die. He says the church  
 before patient should receive her own medication. Doctor does not agree.  
 He is with medication and treatment, as the patient is refusing.  
 The physician says it is hard for doctor to do this patient. She must  
 discuss it is decided that the patient clearly refused treatment when she was  
 healthy. Doctor Pollard says: what choice could we make, in the prison  
 situation of the patient? The patient neither has personal grief and which  
 her husband is now deceased. who has power of attorney? Doctor Pollard says  
 it is very common for patients to change their mind. "Well a month I had  
 went to the prison after that." It is decided to stop the patient and send  
 her home.

## NEW DRAWINGS AND POSTERS

Significant works by contemporary artists were acquired for the Collections of Prints and Drawings and Historical Posters. Among them are drawings by artist-activist Sue Coe related to her *AIDS Portfolio*, 1994, including *Doctor Pollard Leads Ethics Rounds* and *It's Over*; and drawings related to *Through Her Own Eyes*, 2009, which gives voice to HIV-positive female prison inmates, including *Prison Exercise Yard*. The library also acquired a collection of posters and digital works on themes of social justice and health care by artist-activist Rachael Romero, a cofounder of the San Francisco Poster Brigade. Originally displayed on city streets from 1975 to 1982, they bear messages such as “Food is not a weapon, it is a human right,” “Stop forced sterilization,” and “Preventive medicine, not costly operations.”

## NEW MANUSCRIPTS

The Historical Library, with additional support from the Divinity Library Special Collections, obtained the Morse Family Papers, which includes the papers of medical missionary William Reginald Morse and his wife, Anne (Anna) Crosse



Sue Coe, *Doctor Pollard Leads Ethics Rounds*, 1993. Graphite, charcoal, and gouache on Strathmore Bristol board Photo: Copyright ©1993 Sue Coe

Rachael Romero, *Stop Forced Sterilization*, 1977. Linoleum cut, hand-colored by the artist Photo: Kelly Perry

Kinney Morse, and their daughter, Marjorie Morse Crunden. This collection provides valuable documentation of the life and work of the Morses, who served under the American Baptist Foreign Mission Society in China from 1909 to 1937. Detailed and substantive correspondence describes the daily life and work of the Morses, their travels, and the turbulent political and social situation in China during this era.

Morse, with Chinese medical students in the 1920s, overseeing the dissection of a body as Professor of Anatomy and Surgery at West China Union University





NEW SOFTWARE AND DATABASES

This year the Historical Library, along with several other YUL special collections units, implemented new software (Aeon) to make it easier to request materials online through the library catalog and track use of these collections. Professors can request the same materials for their classes from year to year, easily adding new items using the online request form.

The Medical Library initiated subscriptions to two new bioinformatics resources, IPA and MetaCore, in support of the bioinformatics and genomics work being done at the Medical Center.

In addition, the library helped support the acquisition of the PolicyMap database by Yale University Library; PolicyMap is an online service with data for the United States that offers more than 15,000 indicators related to such topics as demographics and public health.

PRESERVATION

The preservation program cares for the library’s circulating collections and rare historical collections, adding value to the library’s assets and ensuring future use. Working with both Access and Delivery Services and the YUL Preservation Department, Martha Horan established workflows for general collections care, including binding, and archival housing for support and protection of our circulating collection. Martha rehoused hundreds of damaged materials from the historical collections and arranged for extremely fragile and rare items, such as ivory anatomical manikins, to receive custom housing from Conservation & Exhibition Services.



EliScholar

The library is actively advancing EliScholar as a platform for its Open Access electronic thesis and dissertation repository, including management of rights. Other collections uploaded to EliScholar include images from the Department of Surgery, the entire collection of YNHH Annual Reports, and the School of Public Health’s Practice Based Community Health Research Reports.

The cover of the 1965 YNHH Annual Report, now available in EliScholar

2,500 Theses were downloaded from EliScholar

560 Items from the circulating collection received preservation treatment

257 Damaged materials from the Medical Historical Library were rehoused

	FY13	FY14	FY15
Electronic Journals	13,051	14,795	22,392
Electronic Books	31,125	33,047	36,017
Total Expenditures	\$2,941,410	\$3,587,171*	\$3,692,805

\*Increased expenditures in FY14 due to acquisition of the Saint Raphael Campus.

## Library as Place

Responding to requests from our patrons, the library created more individualized study space in quiet areas. The Morse Reading Room especially benefited from this reorganization, with a 7 percent increase in individual study seats. The library replaced wooden chairs with height-adjustable swivel chairs. Blue chairs indicate quiet study space, and green chairs designate spaces in which group work and talking are permitted.

The library participated in School of Medicine recruitment activities by offering “Wow ’Em” library tours and orientations to entice the best and brightest to come to Yale. Tours were provided for candidates for several residency programs. Chief residents from Psychiatry reported that this is the first year since they began their work to improve the candidate experience that all of their first-choice candidates chose Yale. Candidates specifically mentioned the library tour as one of the reasons that the Yale program stood out.



Patrons in the Morse Reading Room

*Photo: Terry Dagradi*

**83%**

Increase in use of the 24/7 Computer & Study Space as a result of last year's renovation

**9,474**

Hours reserved in library study rooms

**32,870**

Journal volumes relocated to the Library Shelving Facility, freeing approximately 3,287 linear feet of shelf space

**2**

therapy dogs regularly visit the library. Our new addition, Finian, began work in April 2015 and visits the library on Sunday evenings.





## Special Happenings

### HARRY POTTER'S WORLD: RENAISSANCE SCIENCE, MAGIC, AND MEDICINE

Magic permeated the Cushing/Whitney Medical Library as it hosted the National Library of Medicine's traveling exhibit *Harry Potter's World: Renaissance Science, Magic, and Medicine* from January 19 to February 28, 2015. The exhibit's banners explained the real history behind alchemy, herbology, mythological creatures, and other themes of the Harry Potter series. The Historical Library was transformed into Hogwarts' great hall, and the festivities began with a YUL ball, drawing students, faculty, and children dressed in their finest wizard and witch costumes. The

highlight of the event was a visit by Professor Dumbledore, portrayed enthusiastically by the medical school's Deputy Dean for Education, Richard Belitsky, M.D. Children of all ages asked "Dumbledore" to autograph their copies of the Harry Potter books. Bridging fact and fiction, the library hosted lectures by Yale faculty and staff on topics including "Pharmaceutical Potions" and "Mind-Reading: Animal Minds and Magic." More than 600 people attended events associated with the exhibit, reminding them that the library is truly a magical place.



Students at the YUL Ball



Melanie Norton and a student posing with Dobby the House Elf at the YUL Ball



"Dumbledore" welcomes attendees to the ball  
Photo: John Curtis



Dr. Thomas Duffy lecturing on "Immortality"  
Photo: Terry Dagradi



Dr. Unni Karunakara speaking in the Historical Library  
Photo: Terry Dagradi

### ANNUAL LECTURE OF THE MEDICAL LIBRARY ASSOCIATES

In April the library hosted the 67th Annual Lecture of the Cushing/Whitney Medical Library Associates in the Historical Library. The speaker, Dr. Unni Karunakara, is a senior fellow at Yale's Jackson Institute for Global Affairs and past international president of Médecins Sans Frontières. His lecture was titled "Humanitarian Duties and Action."

### WEBSITE REDESIGN

The library website was redesigned to create a more user-friendly interface optimized for searching and browsing. The site's new responsive design adapts to any device and improves readability. Andy Hickner, Web Services Librarian, employed interviews, user testing, and cutting-edge methods to identify what changes would help our users and to ensure that those changes enhanced the overall user experience.

### NATIONAL CONFERENCES

The Medical Historical Library hosted the Archivists and Librarians in the History of the Health Sciences/Medical Museums Association conference in April, welcoming ninety colleagues from across the nation. This conference was held in conjunction with the American Association for the History of Medicine conference, which Yale hosted for the first time in thirty years. Staff from the Historical Library, including Melissa Grafe, Susan Wheeler, Katie Hart, and Toby Appel, were part of the planning committee and organized events for the conference, including a book exhibit and tours.



A screenshot of the library's homepage as viewed on an Android device

## Exhibits

SEPTEMBER 22, 2014–JANUARY 16, 2015

### *Vesalius at 500*

In celebration of the birth of anatomist Andreas Vesalius in 1514, the library celebrated the important collection of Vesaliana bequeathed by its founder, Harvey Cushing.

### *The Body as a Machine*

Fritz Kahn, physician and popular writer, applied visual metaphor to make the structure and function of the human body understandable to the general public. Posters from his multivolume book *Das Leben des Menschen* (The Life of Man) were displayed with other works that illustrated and complemented the metaphor.



Susan Wheeler leads a tour of the exhibit *Vesalius at 500*  
Photo: Terry Dagradi



### *The Dangers of Underage Drinking and Other Historical Posters*

Among the materials on view were a 1971 series of brightly colored anti-alcohol posters aimed at teenagers, a selection of STD warnings in the form of comic strips, and a 1956 movie poster, *I've Lived Before*.

**JANUARY 22–MAY 15, 2015**

### *Teratology: The Science and History of Human Monstrosity*

This exhibit explored the history of the science of human monstrosity, from early modern accounts of human-animal hybrids and prodigies to present-day explorations of birth defects. The exhibit was featured in fifteen New England news outlets in conjunction with the Yale School of Art's *Side Show* exhibit.

### *Prodigies and Marvels*

A selection from the library's extensive, and seldom seen, collection on this subject introduced a few of these individuals from the sixteenth through the early nineteenth century.

**JANUARY 29–AUGUST 21, 2015**

### *100 Years of Public Health at Yale*

The Yale School of Public Health celebrated its centennial in 2015. This exhibit examined the rise of public health at Yale beginning with the appointment of C.E.A. Winslow in 1915 through the work of the school in the present day.

**MAY 21–SEPTEMBER 9, 2015**

### *Preserving Form, Preserving Content: Caring for Collections at the Medical Library*

This exhibit explored preservation efforts in the Medical Library to care for its important and varied collections.

### *Baldwin's Patent Medicines*

Nine letterpress posters from the late nineteenth century advertised the Baldwin Patent Medicine Company's tonics and pills for an astonishing range of complaints.

### DEPARTMENT OF SURGERY EXHIBIT

Historical Library staff curated and installed an exhibit on medical instruments for the Department of Surgery's hallway rotating exhibit space and provided images and assistance for the department's book on its history, *Yale Surgery: Leaders and Legacies*, by John Fenn, M.D., and Walter Longo, M.D.

### ONLINE EXHIBITS

Thanks in part to the efforts of two of our librarians, Melissa Grafe and Andy Hickner, the Omeka content management system was adopted as the official platform for online exhibits at YUL. The library created online versions of current exhibits using Omeka and then began transferring legacy exhibits onto the platform. Currently, online exhibits include *Selling Smoke: Tobacco Advertising and Anti-Smoking Campaigns*; *Founders and Early Benefactors of the Medical Historical Library*; and *Arnold Carl Klebs, 1870–1943*.



Charles Williams, Wm Bradley, born at Market Wheaton, east riding of Yorkshire aged Eighteen Years and a half, 1810. Hand-colored etching (London: S.W. Fores)



Martha Horan leads a tour of the exhibit *Preserving Form, Preserving Content*  
Photo: Terry Dagradi

## Major Gifts



Photo: Terry Dagradi

Stanley Simbonis '53 YC, '57 M.D. is one of the Cushing/Whitney Medical Library's greatest friends. According to Dr. Simbonis, "The library is the heart and soul of the university. It's the crown jewel. How can you do without it? It's been a storehouse of knowledge throughout the ages." The Stanley Simbonis, M.D. Fellowship was established this year for the Cushing/Whitney

Medical Library thanks to a generous gift from Dr. Simbonis. The fellowship provides the Medical Library with a dedicated source of income to host a visiting fellow from one of several national library fellow programs. Fellows help to influence and establish new library services and programs and allow the Medical Library to better serve Yale and the Medical Center's faculty, staff, and students. Throughout his lifetime, Dr. Simbonis has created six separate Charitable Gift Annuities totaling more than \$2 million, which when realized will establish the Stanley Simbonis, M.D. Endowed Fund at the Cushing/Whitney Medical Library.

William Helfand donated an additional gift of material to the Historical Library, consisting of more than 600 books, children's books, almanacs, comic books, and other ephemera related to medicine and medical advertising.

An additional gift from Dr. Arthur Ebbert's estate was received, bringing his total gift to nearly \$1.5 million.



Онда сам ја дошао на ред. Лекар ме је прегледао. »Лак назеб«, рекао је. »Прописаћу ти лек да што пре оздравиш.«

Image from Nada Iveljić, *We go to the doctor*. Zagreb, 1974.



## Donors

### GIFTS OF \$250 OR MORE

Paul Barash	Paul Dodd	John Kirkwood	Mary Schley
Jack Barchas	Arthur Ebbert	James Lucarini	Kirk Shelley
Jeremiah Barondess	David Eppard	Robert Lyons	Frederick Sherman
Robert Bazemore	John Fenn	Robert Marcus	Gilbert Solitare
A. Bevin	The Fidelity Charitable Gift Fund	Merck Company Foundation	Yung Son
William Branscome	Robert Finkel	Hugh Moffet	Harold and Mimi Steinberg Charitable Trust
Irwin Braverman	James Finn	W. Peterson	Shepard Stone
Ann Burrow	Gary Friedlaender	Richard Petrelli	Lee Strohl
Michael Carey	Robert Johnson	Seth Powsner	A. West
Barbara Coda	Walter Karney	William Register	
The Charles A. Coffin Memorial Fund	Michael Kashgarian	Gloria Robinson	
Frederick Cohn	Kristaps Keggi	Robert Rosa	
	Donald Kent	Seth Rosenthal	

### BECOME A FRIEND OF THE MEDICAL LIBRARY

Through the generosity and support of our Associates, the Medical Library provides essential support for biomedical education, research, and patient care. We encourage you to consider supporting this invaluable and comprehensive resource by becoming a member of the Medical Library Associates.

To make a gift or to find out more about becoming a Medical Library Associate, please visit <http://library.medicine.yale.edu/associates> or contact Katie Hart at [katherine.hart@yale.edu](mailto:katherine.hart@yale.edu) or 203-785-5352. All gifts are tax-deductible.



Students in the  
Medical Library  
*Photo: Terry Dagradi*

## Staff Highlights

### LONGTIME SERVICE AWARDS

#### 35 years

Lynn Sette

#### 15 years

John Gallagher

Mark Gentry

#### 10 years

Janene Batten

Dorota Peglow

Lei Wang

### PUBLICATIONS

Appel TA. "Writing women into medical history in the 1930s: Kate Campbell Hurd-Mead and 'medical women' of the past and present." *Bulletin of the History of Medicine*. 2014. 88(3): 457–492.

Barash P, Bieterman K, and Hersey D. "Game changers: the 20 most important anesthesia articles ever published." *Anesthesia & Analgesia*. 2015. 120(3): 663–670.

Grafe M. "It's in the family: three libraries, three donors." *Nota Bene: News from the Yale Library*. 2014. Annual Report Issue, Fall.

Hersey D, Calhoun S, Crowley G, Krentz J, and Grafe M. "Understanding the research practices of humanities doctoral students at Yale University." 2015. Available at [http://works.bepress.com/denise\\_hersey/10](http://works.bepress.com/denise_hersey/10).

### PRESENTATIONS

Batten J. Faculty. "Supporting clinical care: an institute in evidence-based clinical care for medical librarians." 2014. Denver, Colo.; and Perth, Western Australia.

Funaro MC and Norton M. "Making space, building collaboration: serendipity in the stacks." Lightning talk, New England Technical Services Librarians Annual Spring Conference. 2014. Worcester, Mass.

Funaro MC and Norton M. "Making space, building collaboration: serendipity in the stacks." Poster session, Medical Library Association Annual Meeting. 2015. Austin, Tex.

Gallagher J. "The beauty of brains, tumors, and patients: the Cushing Center." Contributed paper, Medical Library Association Annual Meeting. 2015. Austin, Tex.

Gentry M. "Resources at the point of care." Grand Rounds, Yale Health. 2014. New Haven, Conn.

Grafe M, Calhoun S, Frengel E, Gary D, and Landis W. "Collaborations between subject liaisons and special collections staff." Reference, Instruction and Outreach (RIO) Committee Forum. 2014. New Haven, Conn.

Grafe M and Landis W. "Bones in the archives: medical and health special collections at Yale." Standing Committee on Professional Awareness (SCOPA) Forum. 2014. New Haven, Conn.

Grafe M and Livermore F. "Omeka: piloting a web platform for digital exhibitions at Yale." Standing Committee on Professional Awareness (SCOPA) Forum. 2014. New Haven, Conn.

Grossetta Nardini H. "Beyond Google: fast and reliable ways to find online clinical information." Grand Rounds, Department of Ophthalmology and Visual Science. 2015. New Haven, Conn.

Grossetta Nardini H. "Telecommuting from abroad: a librarian without borders." Lightning talk, Medical Library Association Annual Meeting. 2015. Austin, Tex.

He X, Grossetta Nardini H, Li F, and Liu J. "Prostaglandins and cystoid macular edema: a meta-analysis." Poster session, Ophthalmology Research Day. 2015. New Haven, Conn.

Hersey D. "Review of library resources." Grand Rounds, Department of Surgery. 2015. New Haven, Conn.

Horan M. "Preserving medical collections." Workshop, Archivists and Librarians in the History of the Health Sciences Conference. 2015. New Haven, Conn.



Spak J, Garino A, Gonzalez-Colaso R, Martinez P, Roy B, and Windish D. "Ideas and innovations: review of the 2014 education literature." Medical Education Day at Yale. 2015. New Haven, Conn.

Wang L, Hafler D, Leydon G, and Navaratnam K. "A deep dive into flipping the curriculum with an instructional video." Medical Education Day at Yale. 2015. New Haven, Conn.

Wheeler S and Rossman J. "Teaching with visuals." Archivists and Librarians in the History of the Health Sciences Conference. 2015. New Haven, Conn.

#### IN THE CURRICULUM

Batten J. Faculty. "Evidence-based practice." NURS 957: Evidence. Fall 2014. Yale School of Nursing.

Batten J. Faculty. "YNHH evidence-based practice foundations for nurses." Multiple times throughout the year. Yale-New Haven Hospital.

Gentry M. Invited speaker. "Principles of evidence-based medicine and accessing key EBM resources." JAR Retreat for PGY1s, Internal Medicine, Traditional. May 2015. Yale-New Haven Hospital.

Glover J. Guest lecturer. "The literature search: introduction." CDE 577: Interdisciplinary Research Methods in the Social and Behavioral Sciences. January 2015. Yale School of Public Health.

Glover J. Guest lecturer. "Find it fast: searching core biomedical databases." Student Research, Study Design, and Yale M.D. Thesis. March 2015. Yale School of Medicine.

Glover J. Guest lecturer. "Comprehensive searching." CDE 650: Introduction to Evidence-based Medicine and Health Care. September 2015. Yale School of Public Health.

Glover J and Spak J. Course directors and faculty. "Information survival skills elective for medical students." October 2014; January 2015. Yale School of Medicine.

Glover J and Spak J. Faculty. "Evidence-based psychiatry." Primary Care and Mental Health Clerkship (in-patient psychiatry) Precede. June 2015. Yale School of Medicine.

Glover J and Spak J. Faculty. "Evidence-based medicine." Medical Approach to the Patient Clerkship, Internal Medicine Boot Camp. June 2015. Yale School of Medicine.

Glover J, Spak J, and Wang L. Guest lecturers. "Literature search workshop series." Introduction to Research. 2014; 2015. Yale Physician Associate Program.

Glover J, Spak J, and Wang L. Guest lecturers. "Introduction to literature searching." Introduction to Research. April 2015. Yale Physician Associate Program.

Hersey D. Guest lecturer. "Managing your citations." Diagnostic Radiology Resident Didactic Session. August 2014. Yale-New Haven Hospital.

Hersey D. Guest lecturer. "Library resources for critical care." CTICU. October 2014. Yale-New Haven Hospital.

Hersey D. Guest facilitator. "How to critically appraise articles." Anesthesiology Journal Club. December 2014. Yale-New Haven Hospital.

Hersey D. Guest lecturer. "Asking a clinical question: PICO." Emergency Medicine Resident Didactic Session. December 2014. Yale-New Haven Hospital.

Hersey D. Guest lecturer. "Using library resources." Surgery Fellows. March 2015. Yale-New Haven Hospital.

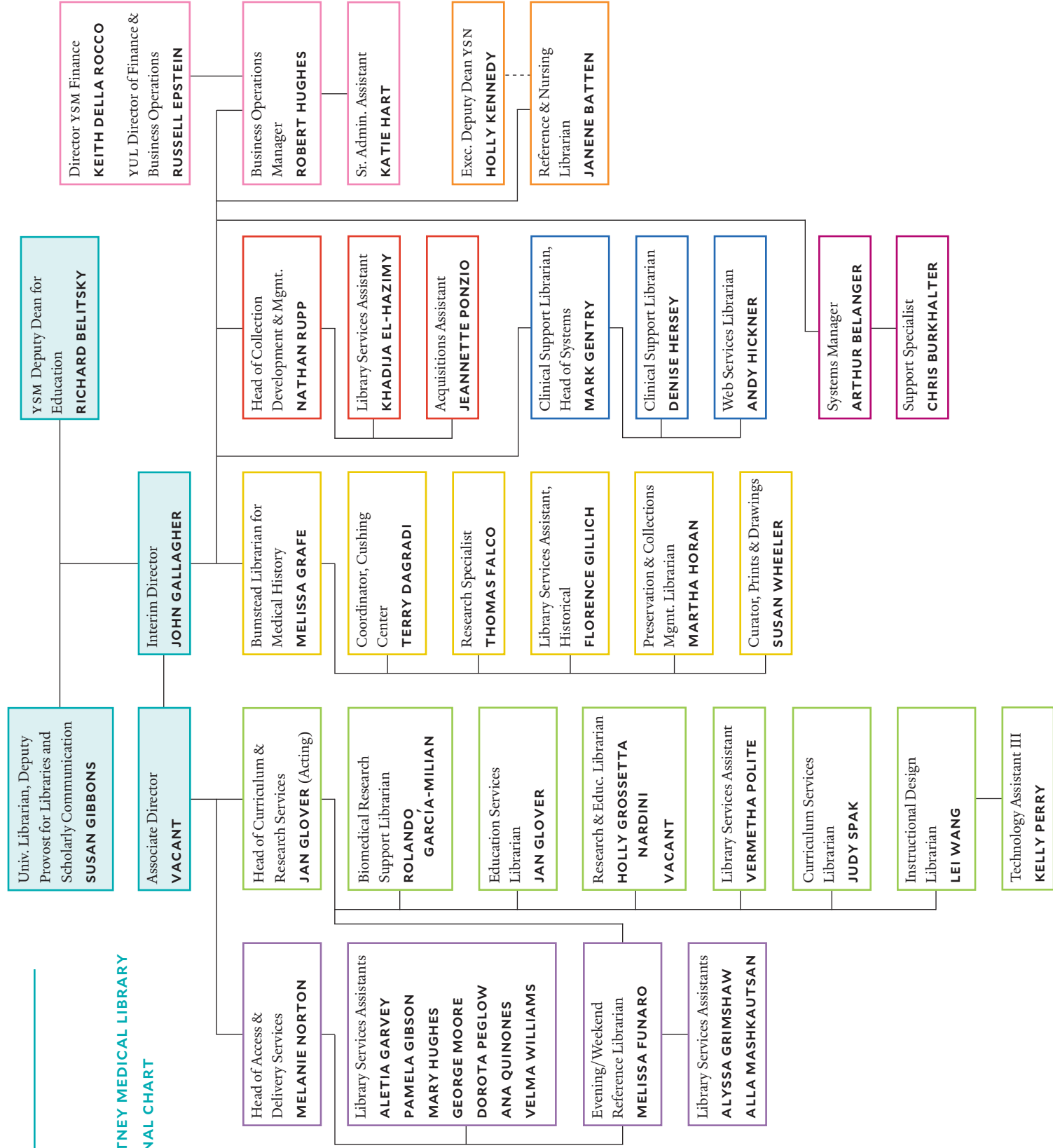
Hersey D and Gentry M. Guest lecturers. "Information survival skills elective for medical students." January 2015. Yale School of Medicine.

Spak J. Guest lecturer. "Effectively searching the medical education literature." Medical Education Fellowship. September 2014. Teaching and Learning Center, Yale School of Medicine.

Wang L. Guest lecturer. "Information survival skills elective for medical students." October 2014; January 2015. Yale School of Medicine.

# Staff

## CUSHING/WHITNEY MEDICAL LIBRARY ORGANIZATIONAL CHART 2014-2015





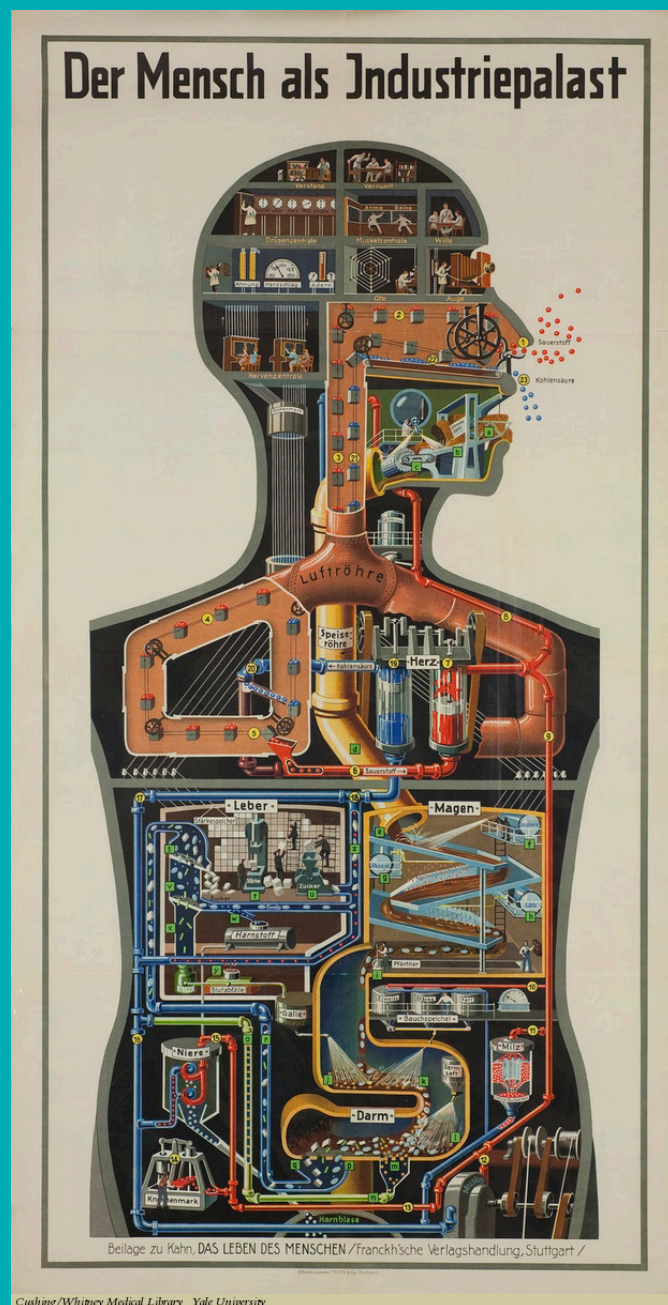
---

## In Memoriam



*Photo: Joanne Wilcox*

After a long illness, Lynn Sette passed away peacefully in April. Lynn was beloved by so many here at the Cushing/Whitney Medical Library, as a truly kind and considerate friend and colleague. Lynn first joined the Medical Library as an acquisitions assistant in 1979. Upon earning a Master's of Library Science from Southern Connecticut State University in 1983, she became a reference librarian, a position she truly loved. She was passionate about her work, serving as a library liaison to the Departments of Pediatrics and Dermatology and as a personal librarian for medical students. Among her proudest accomplishments was her collaboration with staff at the New Haven Free Public Library to create a consumer health information collection to serve the health information needs of New Haven residents. For many years Lynn volunteered weekly at Yale-New Haven Hospital's Newborn Special Care Unit, work that was extremely close to her heart. Our colleague will be sorely missed.



*Der Mensch als Industriepalast* (Man as Industrial Palace), 1926, featured in our exhibit *The Body as a Machine*, is from one of the volumes of *Das Leben des Menschen* (The Life of Man) by Fritz Kahn, a German gynecologist and popular science writer. Kahn's books were famous for their detailed, innovative, and aesthetically pleasing illustrations. He is widely recognized as a pioneer of information graphics, using images and visual metaphors to convey information and ideas.

[facebook.com/yalemedlibrary](https://facebook.com/yalemedlibrary)  
[library.medicine.yale.edu](https://library.medicine.yale.edu)  
[instagram.com/yalemedhistlib](https://instagram.com/yalemedhistlib)